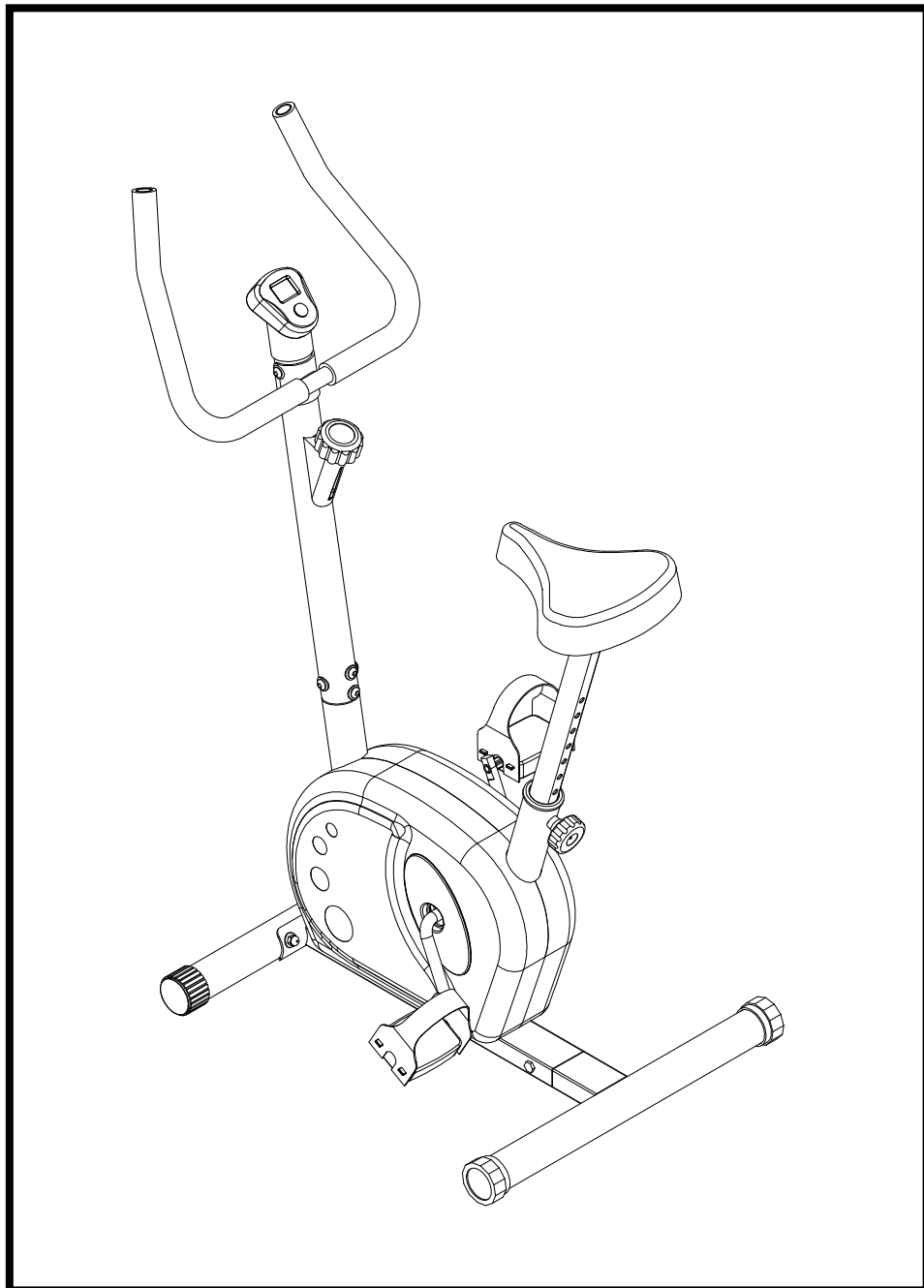




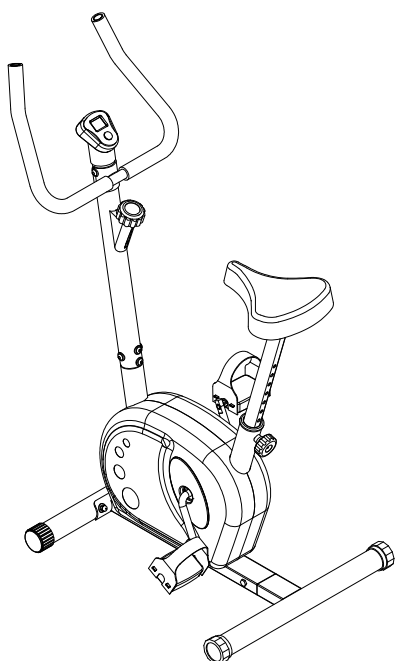
KC-154

MAGNETIC BIKE



INDEX

<i>Important Safety Information</i>	<i>1</i>
<i>Exploded View.....</i>	<i>2</i>
<i>Parts List</i>	<i>3</i>
<i>Assembly Instructions</i>	<i>4</i>
<i>Exercise Instructions</i>	<i>7</i>
<i>Exercise Computer</i>	<i>8</i>
<i>Trouble Shooting.....</i>	<i>9</i>

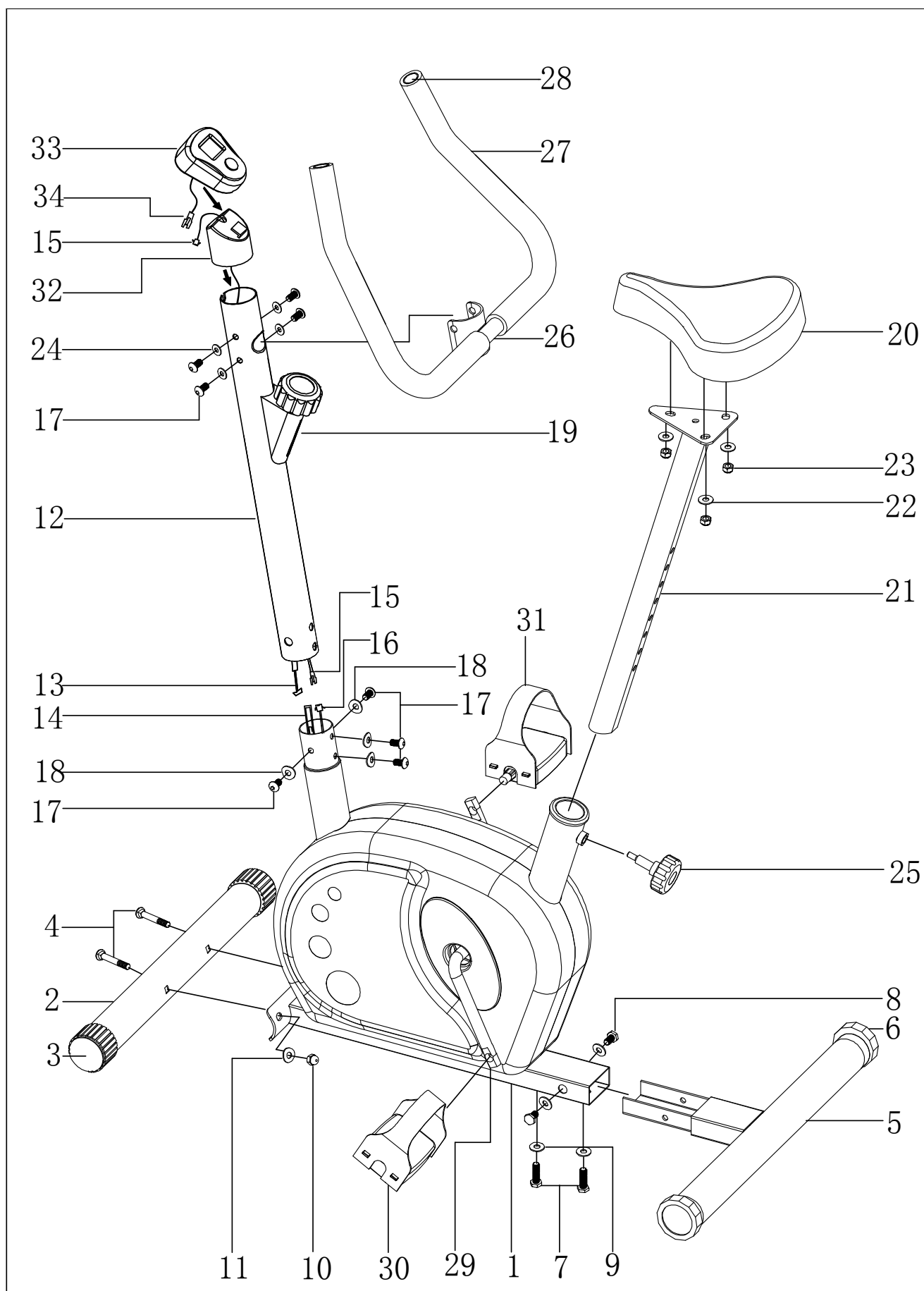


IMPORTANT SAFETY INFORMATION

Please keep this manual in a safe place for reference.

1. It is important to read this entire manual before assembling and using the equipment. Safe and efficient use can only be achieved if the equipment is assembled, maintained and used properly. It is your responsibility to ensure that all users of the equipment are informed of all warnings and precautions.
2. Before starting any exercise program you should consult your doctor to determine if you have any physical or health conditions that could create a risk to your health and safety, or prevent you from using the equipment properly. Your doctor's advice is essential if you are taking medication that affects your heart rate, blood pressure or cholesterol level.
3. Be aware of your body's signals. Incorrect or excessive exercise can damage your health. Stop exercising if you experience any of the following symptoms: Pain, tightness in your chest, irregular heartbeat, extreme shortness of breath, feeling light headed, dizzy or nauseous. If you do experience any of these conditions you should consult your doctor before continuing with your exercise program.
4. Keep children and pets away from the equipment. The equipment is designed for adult use only.
5. Use the equipment on a solid, flat level surface with a protective cover for your floor or carpet. For safety space, the equipment should have at least 0.5 meter of free space all around it.
6. Before using the equipment, check the nuts and bolts are securely tightened.
7. The safety level of the equipment can only be maintained if it is regularly examined for damage and/or wear and tear.
8. Always use the equipment as indicated. If you find any defective components while assembling or checking the equipment, or if you hear any unusual noise coming from the equipment during use, stop. Do not use the equipment until the problem has been rectified.
9. Wear suitable clothing while using the equipment. Avoid wearing loose clothing which may get caught in the equipment or that may restrict or prevent movement.
10. The equipment has been tested and certified to EN957 under class H.C. Suitable for domestic, home use only. Maximum weight of user: 100kg/220lbs. Braking is speed independent.
11. The equipment is not suitable for therapeutic use.
12. Care must be taken when lifting or moving the equipment so as not to injure your back. Always use proper lifting techniques and/or use assistance.

EXPLODED-VIEW ASSEMBLY DRAWING





**Carriage Bolt
(M8x60mm)**



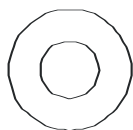
**Fixing Bolt
(M8x15mm)**



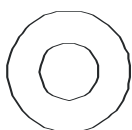
**Fixing Bolt
(M8x30mm)**



**Fixing Bolt
(M8x16mm)**



**Curved Washer
(Ø8)**



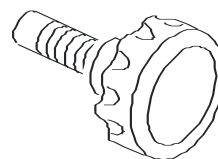
**Washer
(Ø8)**



**Nylock Nut
(M8)**



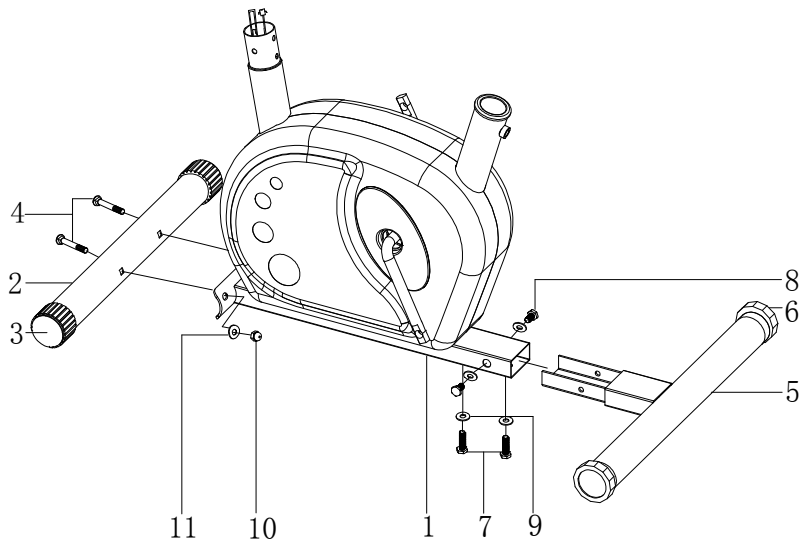
**Domed Nut
(M8)**



Adjustment Knob

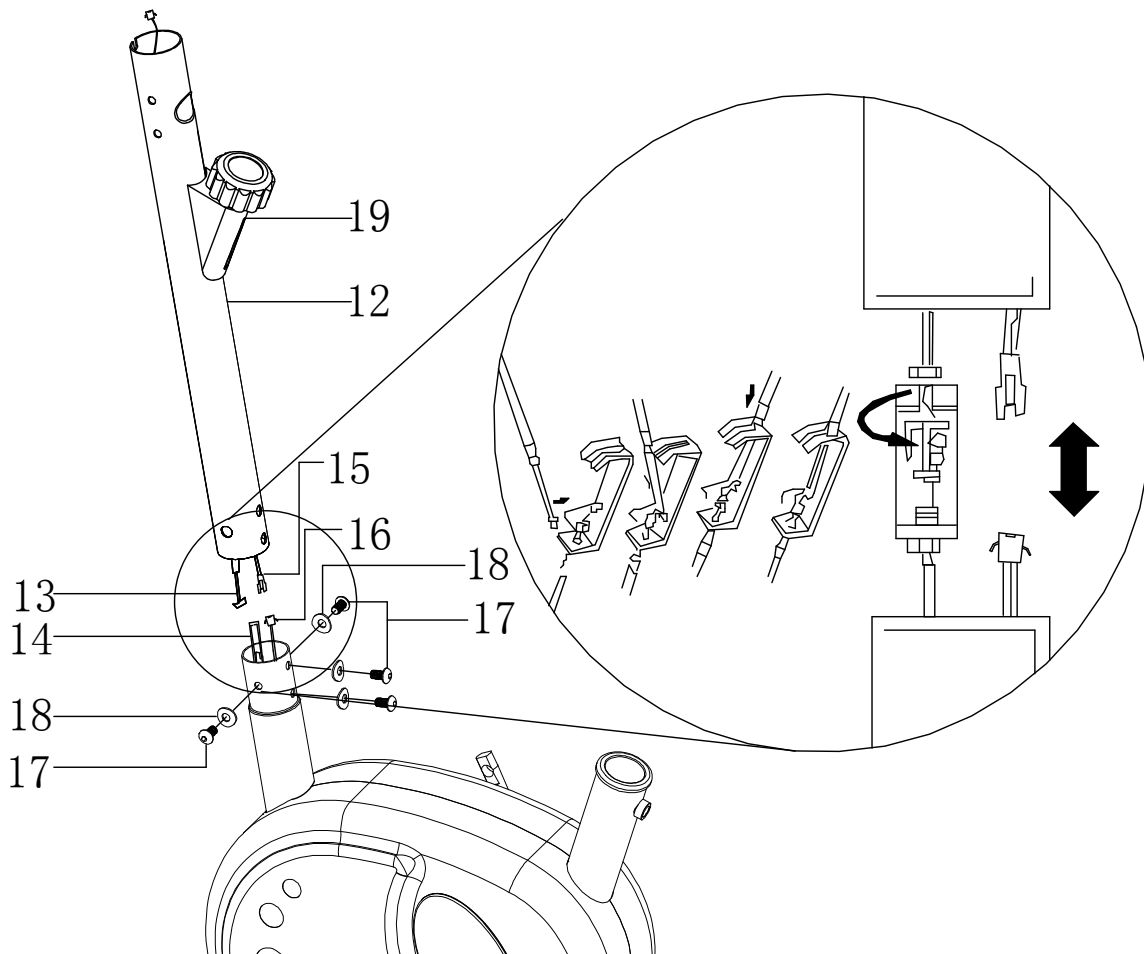
PARTS LIST		
PART NO.	DESCRIPTION	QTY
1.	Main Frame	1
2.	Front Stabilizer	1
3.	End Cap (Front)	2
4.	Carriage Bolt (M8x60mm)	2
5.	Rear Stabilizer	1
6.	Adjustment End Cap (Rear)	2
7.	Fixing Bolt (M8x30mm)	2
8.	Fixing Bolt (M8x16mm)	2
9.	Washer (Ø8X20)	4
10.	Domed Nut (M8)	2
11.	Curved Washer (Ø8)	2
12.	Front Post	1
13.	Upper Tension Cable	1
14.	Lower Tension Hook	1
15.	Upper computer Wire	1
16.	Lower computer Wire	1
17.	Fixing Bolt (M8x16mm)	8
18.	Curved Washer (Ø8)	4
19.	Tension Knob & Assemble	1
20.	Seat	1
21.	Seat Post	1
22.	Washer (Ø8)	3
23.	Nylock Nut (M8)	3
24.	Washer (Ø8X16)	4
25.	Adjusting Knob	1
26.	Handlebar	1
27.	Handlebar Grip	2
28.	Handlebar Plug	2
29.	Crank Arm	1
30.	Pedal (Left)	1
31.	Pedal (Right)	1
32.	Computer Holder	1
33.	Computer	1
34.	Computer wire	1

ASSEMBLY INSTRUCTIONS



STEP 1

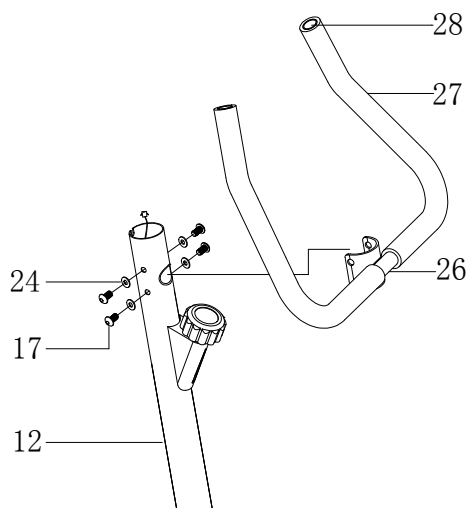
Attach the Front Stabilizers (pt. 2) to the Main Frame (pt. 1) using 2 sets of M8 Domed Nuts (pt. 10), Ø8 Curved Washers (pt.11) and M8x60mm Carriage Bolts (pt. 4). Slide the Rear Stabilizer (pt. 5) into the Main Frame (pt. 1), making sure the open side of the bracket is facing up, as shown, then fix with 4pcs Ø8X20 Washer (pt. 9), 2pcs M8x30mm Fixing Bolt (pt. 7) and 2pcs M8x16mm Fixing Bolt (pt. 8).



STEP 2

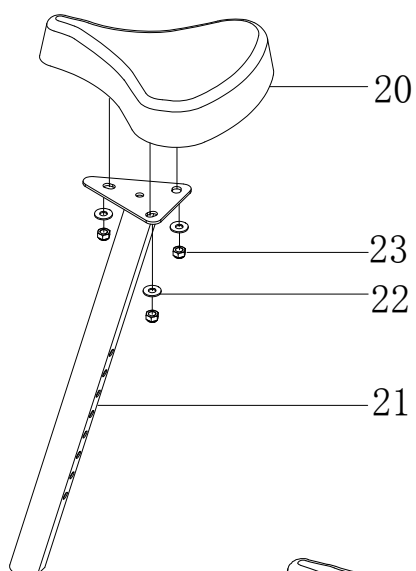
Take the Front Post (pt. 12) and join the Upper Computer Wire (pt. 15) with Lower Computer Wire (pt. 16). Then connect the Tension Cable (pt. 13) to the Tension Hook (pt.14). **(Show Fig.1)** Slide the Front Post (pt.12) into the front post housing, then fix with 4 sets of M8 X 16mm Bolts (pt. 17) and Ø8 Curved Washers (pt. 18).

Note: Before connecting the tension cables, please switch the tension knob to "+"



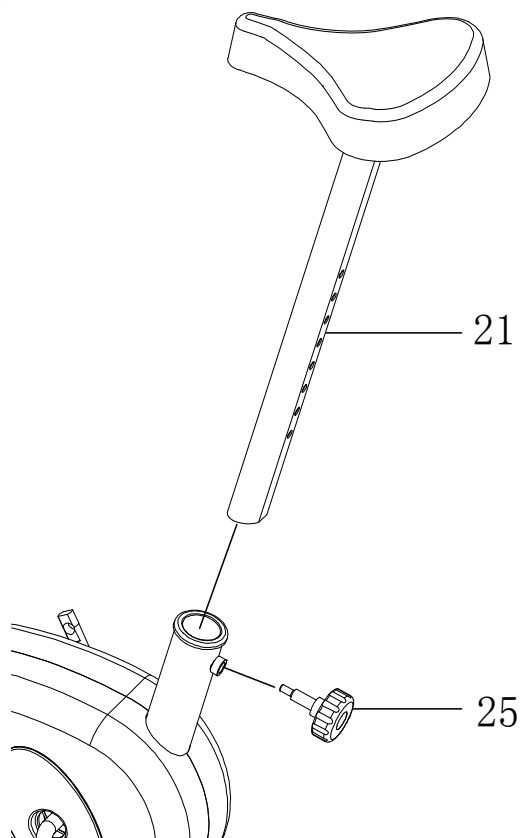
STEP 3

Attach the Handlebar (pt. 26) to the Front Post (pt. 12), fix with four sets of Fixing bolts (pt. 17) , Washer (Ø8X16)(24),



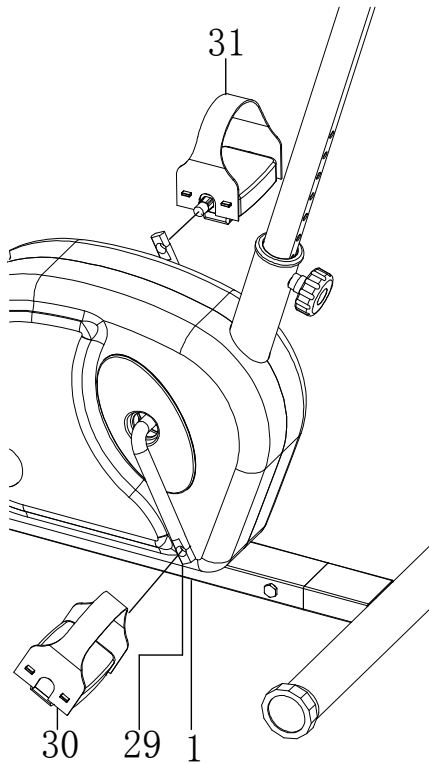
STEP 4

Fix the Seat (pt. 20) to the Seat post (pt. 21) by using the three sets of Washers (pt. 22) and three Nylock Nuts (pt. 23) located under the seat.



STEP 5

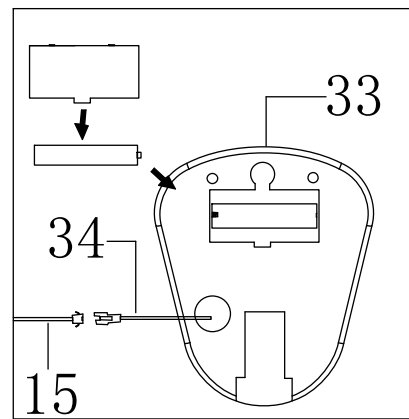
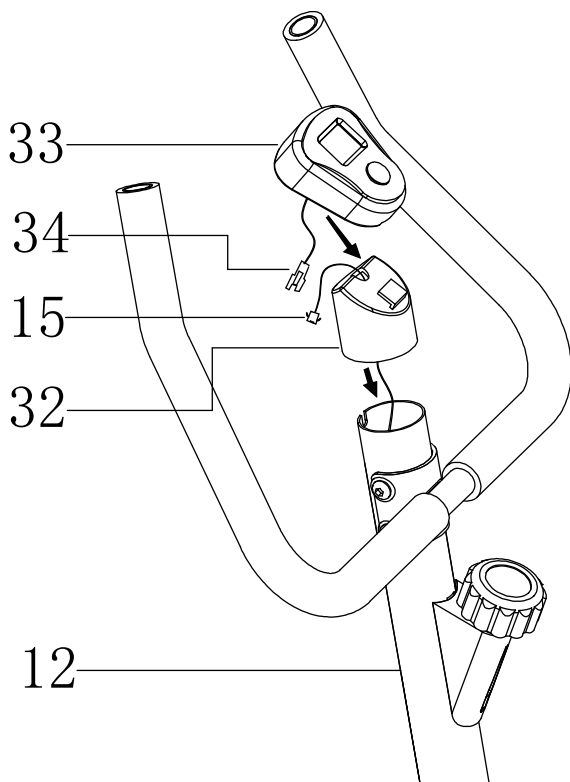
Insert the Seat Post (pt. 21) into the Seat Post housing and line up the holes (The correct height adjustment can be made when the bike is fully assembled) Secure the seat in position with the Adjustment Knob (pt. 25).



STEP 6

The Pedals (pt. 30 & pt. 31) are marked "L" and "R" - Left and Right.

Connect them to their appropriate Crank Arms (pt. 29). The right crank arm is on the right hand side of the cycle as you sit on it. Note that the Right Pedal (pt. 31) should be threaded on clockwise and the Left pedal anti-clockwise.



STEP 7

Plug the upper computer Sensor Wire (pt. 15),cross the computer holder(32)

Slide the computer hold(32) to the front post(12)

slide the Computer (pt. 33) onto the Computer Holder (pt. 32).

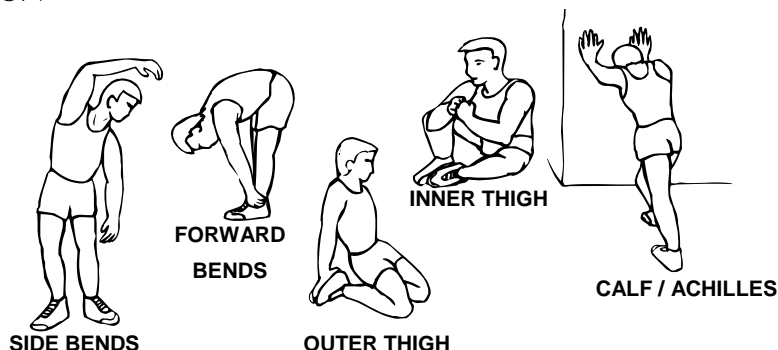
connect the computer wire(34)

EXERCISE INSTRUCTIONS

Using your **MAGNETIC BIKE** will provide you with several benefits, it will improve your physical fitness, tone muscle and in conjunction with a calorie controlled diet help you lose weight.

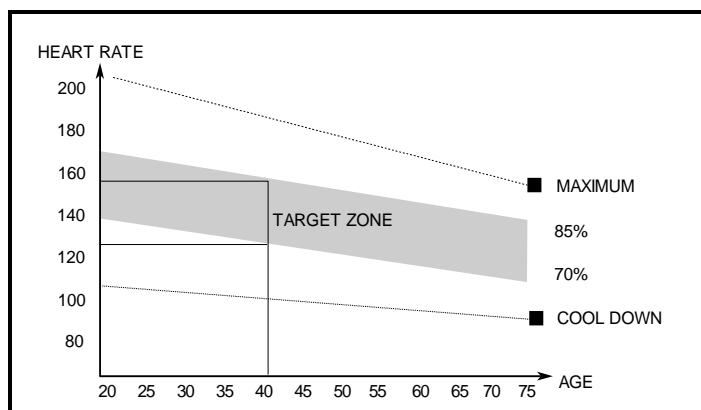
1.The Warm Up Phase

This stage helps get the blood flowing around the body and the muscles working properly. It will also reduce the risk of cramp and muscle injury. It is advisable to do a few stretching exercises as shown below. Each stretch should be held for approximately 30 seconds, do not force or jerk your muscles into a stretch - if it hurts, STOP.



2.The Exercise Phase

This is the stage where you put the effort in. After regular use, the muscles in your legs will become more flexible. Work to your but it is very important to maintain a steady tempo throughout. The rate of work should be sufficient to raise your heartbeat into the target zone shown on the graph below.



This stage should last for a minimum of 12 minutes though most people start at about 15-20 minutes.

3. The Cool Down Phase

This stage is to let your Cardio-vascular System and muscles wind down. This is a repeat of the warm up exercise e.g. reduce your tempo, continue for approximately 5 minutes. The stretching exercises should now be repeated, again remembering not to force or jerk your muscles into the stretch.

As you get fitter you may need to train longer and harder. It is advisable to train at least three times a week, and if possible space your workouts evenly throughout the week.

MUSCLE TONING

To tone muscle while on your **MAGNETIC BIKE** you will need to have the resistance set quite high. This will put more strain on our leg muscles and may mean you cannot train for as long as you would like. If you are also trying to improve your fitness you need to alter your training program. You should train as normal during the warm up and cool down phases, but towards the end of the exercise phase you should increase resistance making your legs work harder. You will have to reduce your speed to keep your heart rate in the target zone.

WEIGHT LOSS

The important factor here is the amount of effort you put in. The harder and longer you work the more calories you will burn. Effectively this is the same as if you were training to improve your fitness, the difference is the goal.

EXERCISE COMPUTER

FUNCTION BUTTON:

MODE: Press to select desired function .Hold down for 4 seconds to totally reset all functions .
(There is no single function reset available)

FUNCTIONS:

SCAN: Automatically scans through each function every 6 seconds.

TIME: Displays the accumulated time up to 99:59 minutes during exercise .

SPEED: Displays the current speed up to 9999KMH. This will display on the monitor constantly.

DISTANCE: Displays the accumulated distance up to 99.99KM during each exercise period.

CALORIES: Displays the accumulated calories consumption up to 999.9 calories per exercise session. (this data is a rough guide for comparison between different exercising sessions. it must not be used for medical purposes)

NOTES.

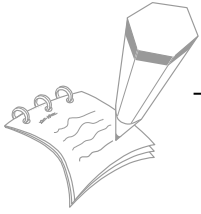
1. When you stop exercising a STOP sign will show in the top left-hand corner.
2. When no signal is transmitted to the computer for a period of 4 minutes the LCD display will shut off automatically, all function values will be stored.
3. The computer will turn on, either pressing the button or beginning your exercise session. All function values (speed excluded) will start counting from previous.
4. If the computer display is incorrect please re-set by removing the batteries, then reinstalling.
5. Battery specification:-1.5V AA (1 piece).

TROUBLE SHOOTING.

1. **Change the battery.** To change the computer battery, please slide the computer from the computer holder, remove the battery cover on the back of the computer console, and remove the batteries. Replace with 1 x AA batteries. Finally put the cover back on the console, and slide the computer back on the computer holder.
2. **Computer not working correctly.** If your computer is not working correctly, please check whether the lower sensor wire is connected to the upper sensor wire, and make sure the upper sensor wire is connected to the computer wire. When you have checked the above, and the computer still not working, then please make sure the batteries are installed correctly in the computer and that the batteries are still working.

MAINTENANCE

1. Before using the bike, always make sure all bolts/nuts are fully tightened.
2. A spent battery is hazardous waste, please dispose of it correctly, and do not throw it in the trash.
3. When eventually you want to scrap the machine, you should remove the batteries from the computer, and dispose separately as hazardous waste.



EXERCISE NOTES

Use this space to record your own exercise routine results.

