

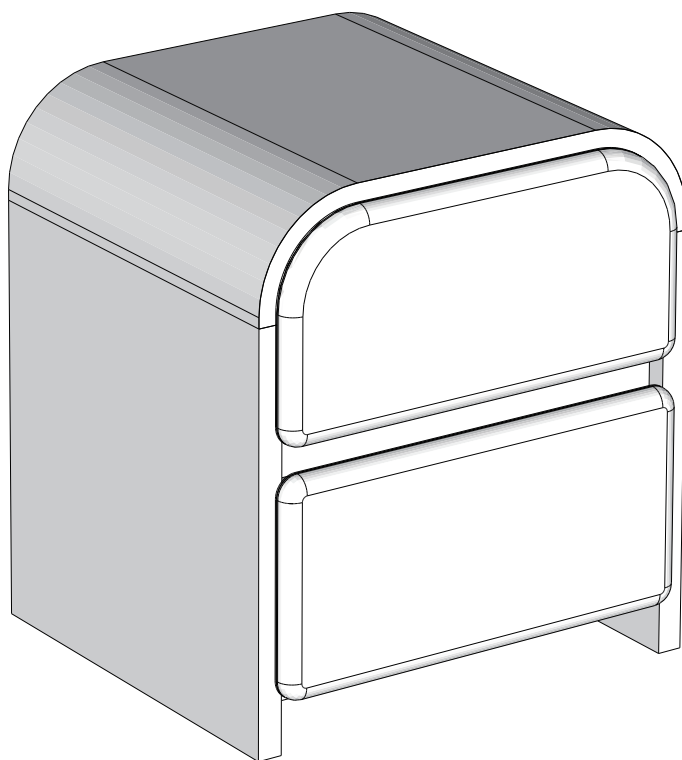
NEXT

BUBBLE / BUBBLE WHITE BEDSIDE

Q93890/643921

Assembly instructions

Actual product size
H50 x W45 x D41.5 cm



Need Help ?

With: Assembly instruction

Missing or damaged parts

IMPORTANT - RETAIN FOR FUTURE REFERENCE

CALL: 0333 777 8999

NEXT BUBBLE / BUBBLE WHITE BEDSIDE

Q93890/643921
Assembly instructions

BEFORE YOU START

Number of people required to assemble

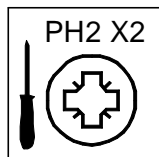
Two people are required to assemble this item



Time to assemble : 30 minutes



Tools required



not supplied

Do's

We suggest you spend a short time reading through this leaflet before you start.

When you are ready to start, make sure that you have the right tools and plenty of space.

Unwrap all packaging materials and place the components on a clean surface to protect it from damage,
We recommend that the packaging is used to protect the surfaces during assembly.

Carefully check that you have all the parts before beginning assembly.

Due to the size of this product we recommend that it is assembled in the room intended for use.

Ensure the product is fully assembled as illustrated and all fixings fully tightened before use.

Wipe occasionally with a soft cloth slightly dampened with water. Then buff with a dry clean soft cloth.

Wood will mellow and change colour over time, we recommend that ornaments and items placed on the surface are moved regularly for the first few months to prevent uneven mellowing.

Don'ts

Do not drag or pull your furniture.

Do not rub or scrub the surface when cleaning.

Do not use silicone based furniture polish. Silicone in furniture polishes can break down the finish.

Never allow any kind of liquid to remain on your furniture.
Absorption can cause wood to warp or finishes to de-laminate.

Do not place hot items (e.g. hot drinks) directly on to the wood surface. Please make sure you use a placemat or coaster.

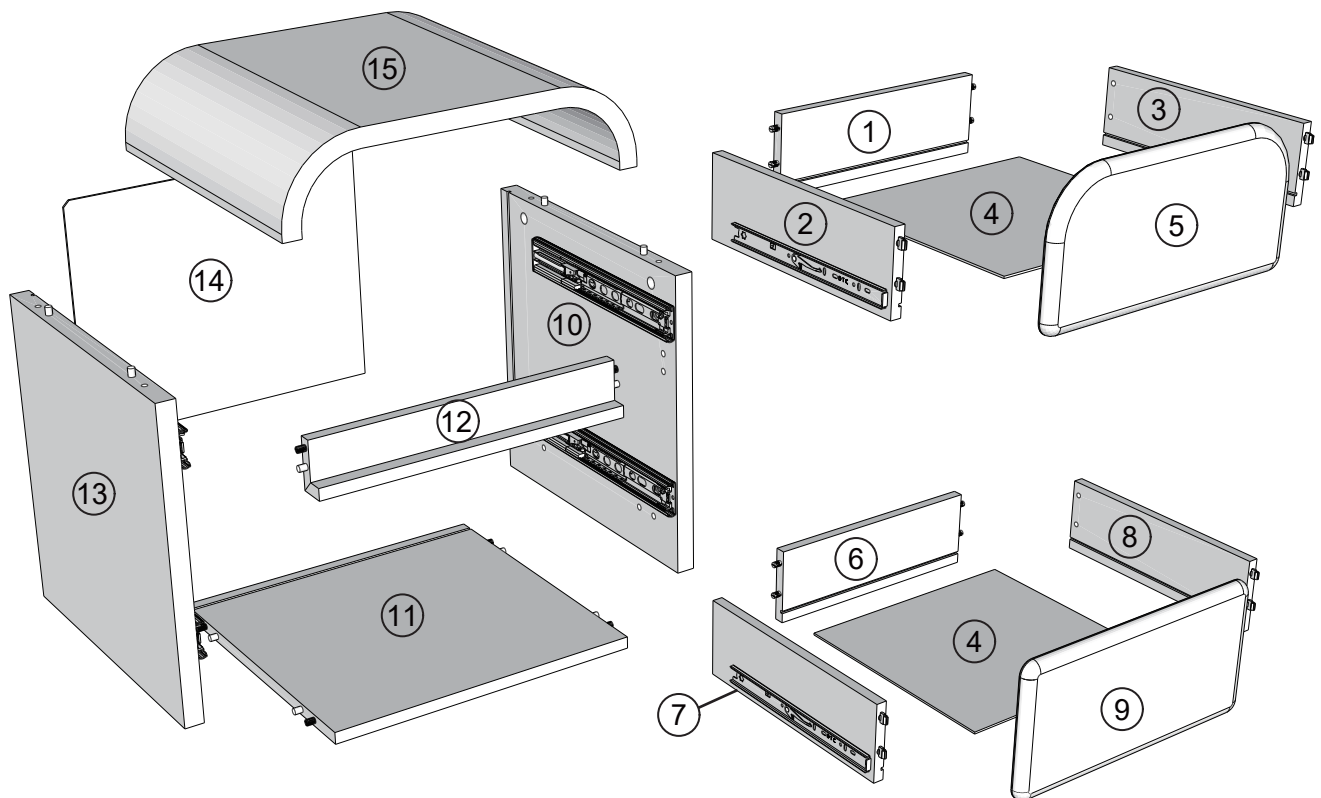
NEXT

BUBBLE / BUBBLE WHITE BEDSIDE

Q93890/643921

Assembly instructions

GETTING TO KNOW YOUR PRODUCT



BUBBLE / BUBBLE WHITE BEDSIDE

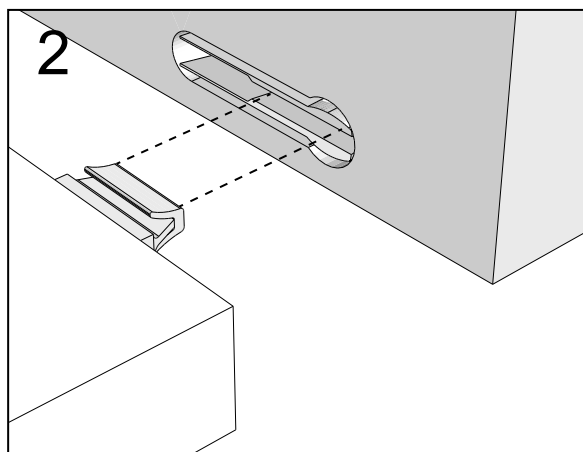
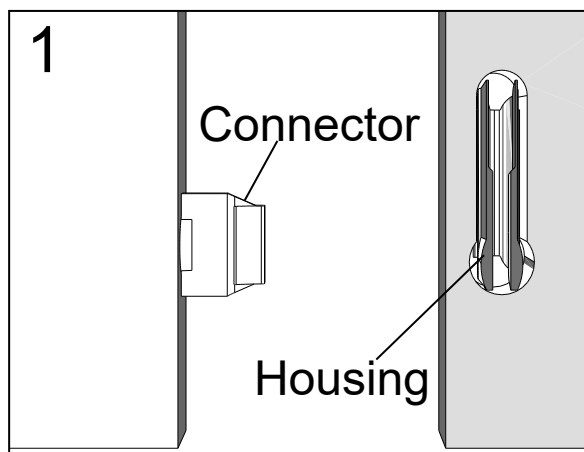
Q93890/643921
Assembly instructions

Components supplied. Please use this guide if you require replacement parts.

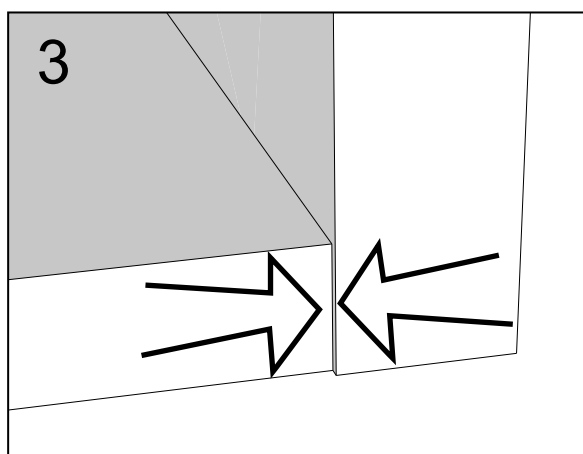
| Ref | Dimensions | Visual | Qty | Ctn |
|-----|-------------|---|-----|-----|
| 1 | 9.5x35cm |  | 1 | 1 |
| 2 | 9.5x35cm |  | 1 | 1 |
| 3 | 9.5x35cm |  | 1 | 1 |
| 4 | 34x35.5cm |  | 2 | 1 |
| 5 | 20.5x41.5cm |  | 1 | 1 |
| 6 | 11.5x35cm |  | 1 | 1 |
| 7 | 11.5x35cm |  | 1 | 1 |
| 8 | 11.5x35cm |  | 1 | 1 |

| Ref | Dimensions | Visual | Qty | Ctn |
|-----|-------------|---|-----|-----|
| 9 | 20.5x41.5cm |  | 1 | 1 |
| 10 | 39x39.5cm |  | 1 | 1 |
| 11 | 39.5x40.5cm |  | 1 | 1 |
| 12 | 7x40.5cm |  | 1 | 1 |
| 13 | 39x39.5cm |  | 1 | 1 |
| 14 | 33x41cm |  | 1 | 1 |
| 15 | 39.5x45cm |  | 1 | 1 |

NEXT FITTINGS ASSEMBLE INSTRUCTIONS



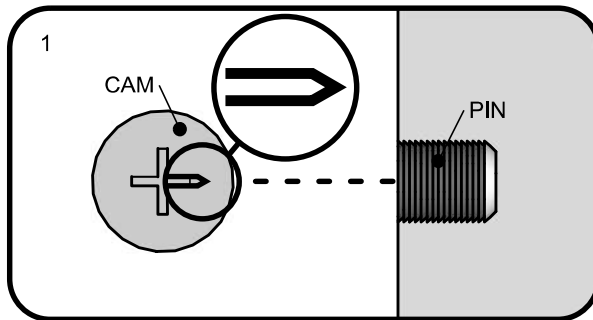
Push connector into housing to be jointed.



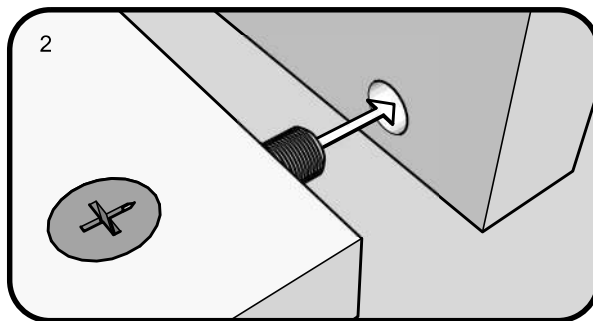
Make sure there is no gap between the panels.

NEXT

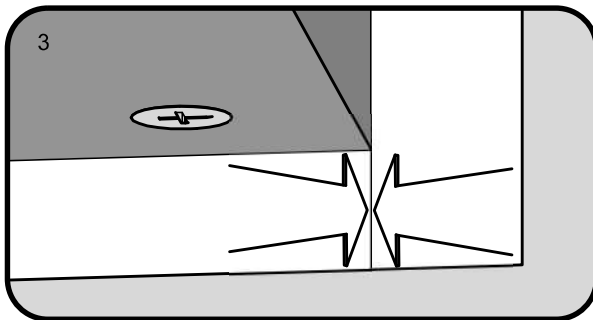
TITUS TIGHTENING INSTRUCTIONS



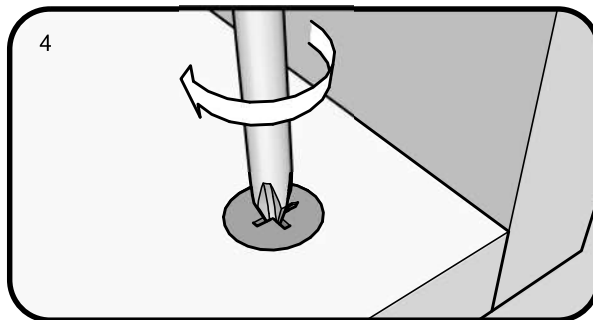
Line up the arrow on the CAM with the PIN.



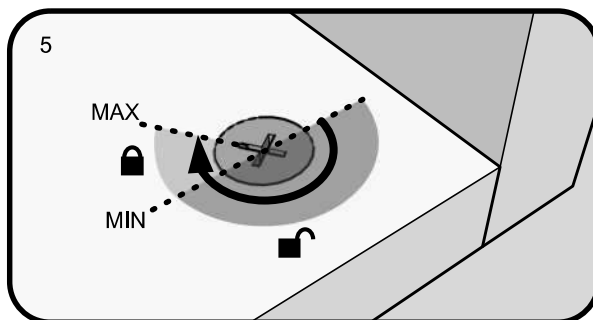
Push the pins into the holes in the panel to be joined.



Make sure there is no gap between the panels.



Use a cross-point screwdriver (PH2 or PZ2 is ideal) to tighten the cams and lock the panels together.



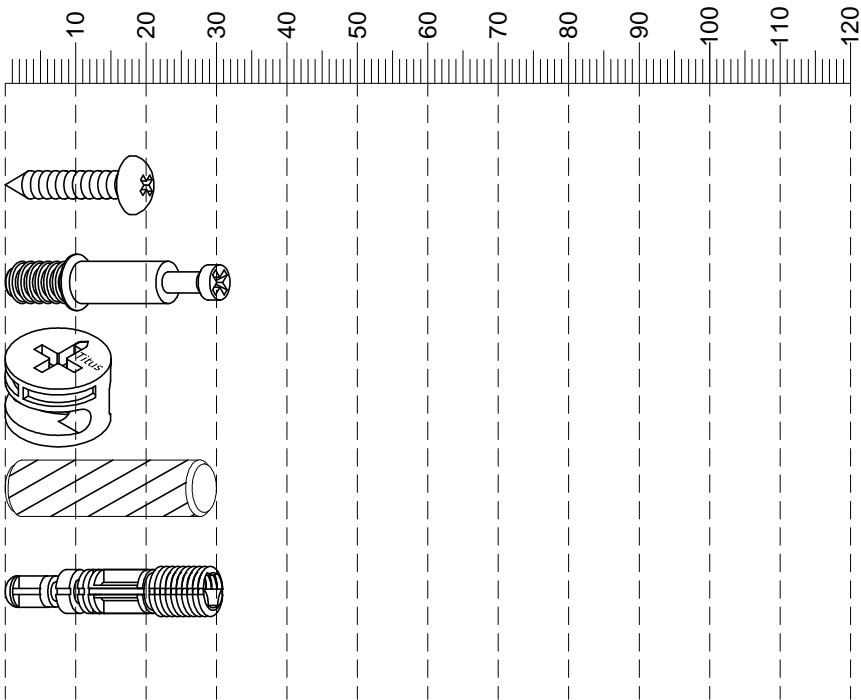
The panels are locked when each cam is turned to between 1/2 and 2/3 of a full turn (Maximum rotation)

NEXT

BUBBLE / BUBBLE WHITE BEDSIDE
Q93890/643921
Assembly instructions

Fixtures and fittings
supplied (actual size)

| Ref | Dimensions | Qty | Spare Qty |
|-----|-------------|-----|-----------|
| S41 | Ø4 x 16mm | 1 | 1 |
| B12 | Ø7.5 x 33mm | 4 | 1 |
| B3 | Ø15 x 12mm | 4 | 1 |
| D6 | Ø8 x 30mm | N/A | 1 |
| B8 | Ø8 x 38mm | N/A | 1 |



Fixtures and fittings supplied (not to scale)

| Ref | Dimensions | Qty | Spare Qty | Visual |
|-----|------------|-----|-----------|--------|
| T39 | N/A | 1 | N/A | |
| T38 | N/A | 4 | 1 | |

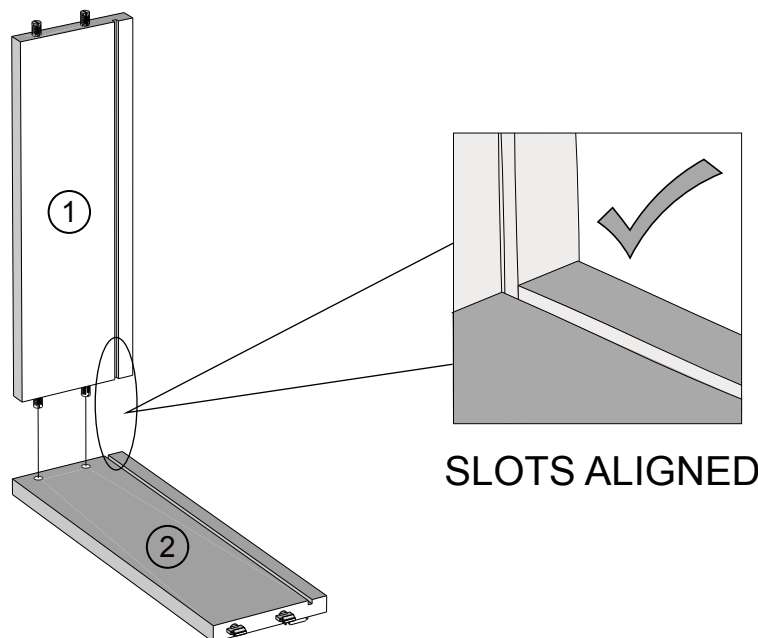
NEXT

BUBBLE / BUBBLE WHITE BEDSIDE

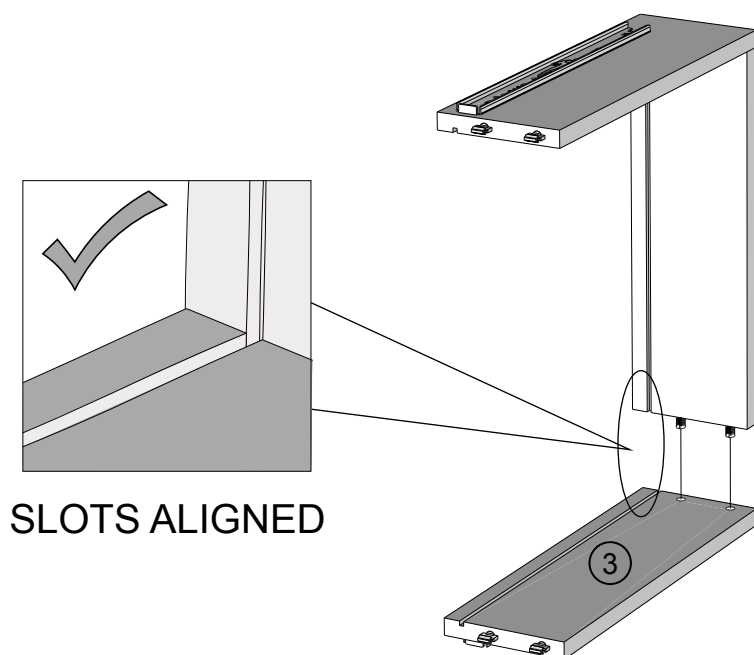
Q93890/643921

Assembly instructions

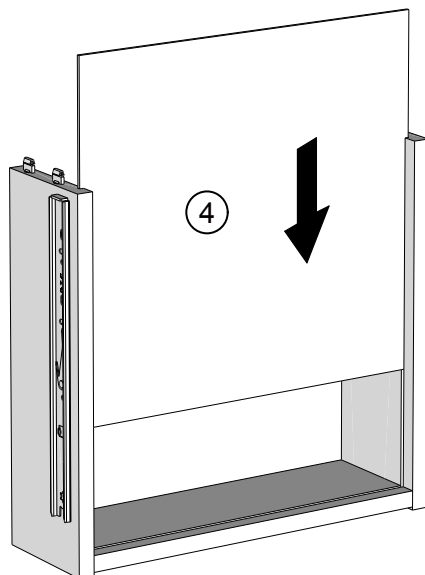
1



2

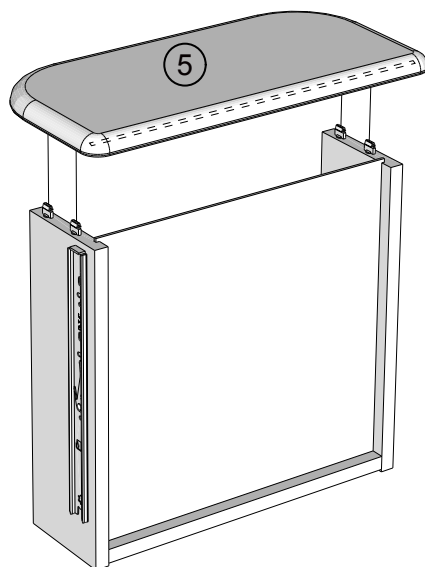


3



4

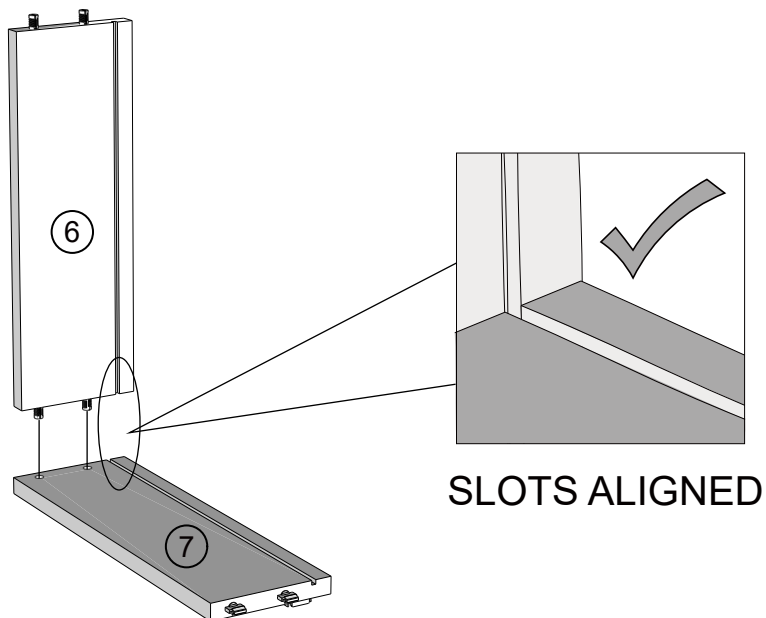
Note: Drawer will be permanently assembled once panel 5 is fitted.



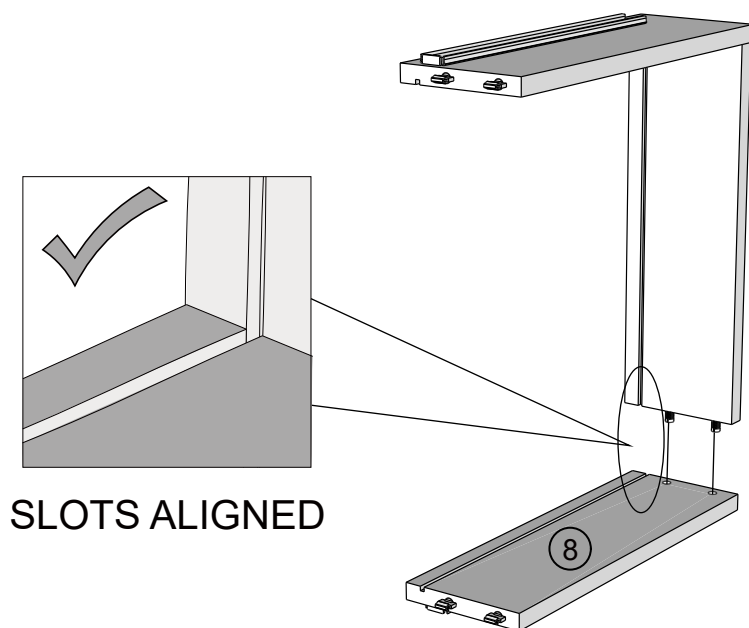
NEXT BUBBLE / BUBBLE WHITE BEDSIDE

Q93890/643921
Assembly instructions

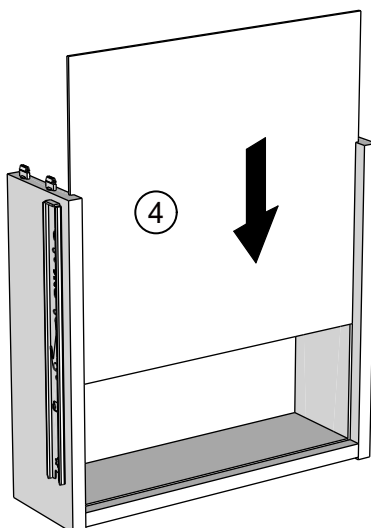
5



6

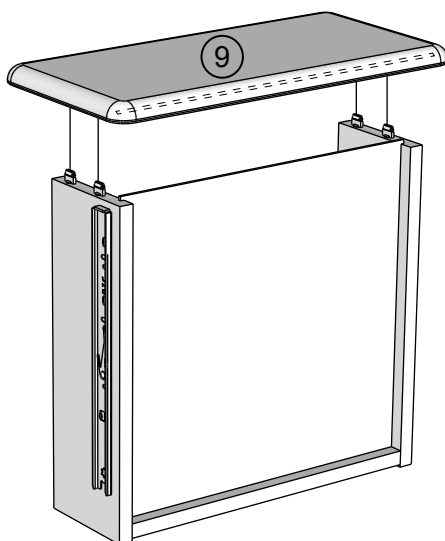


7



8

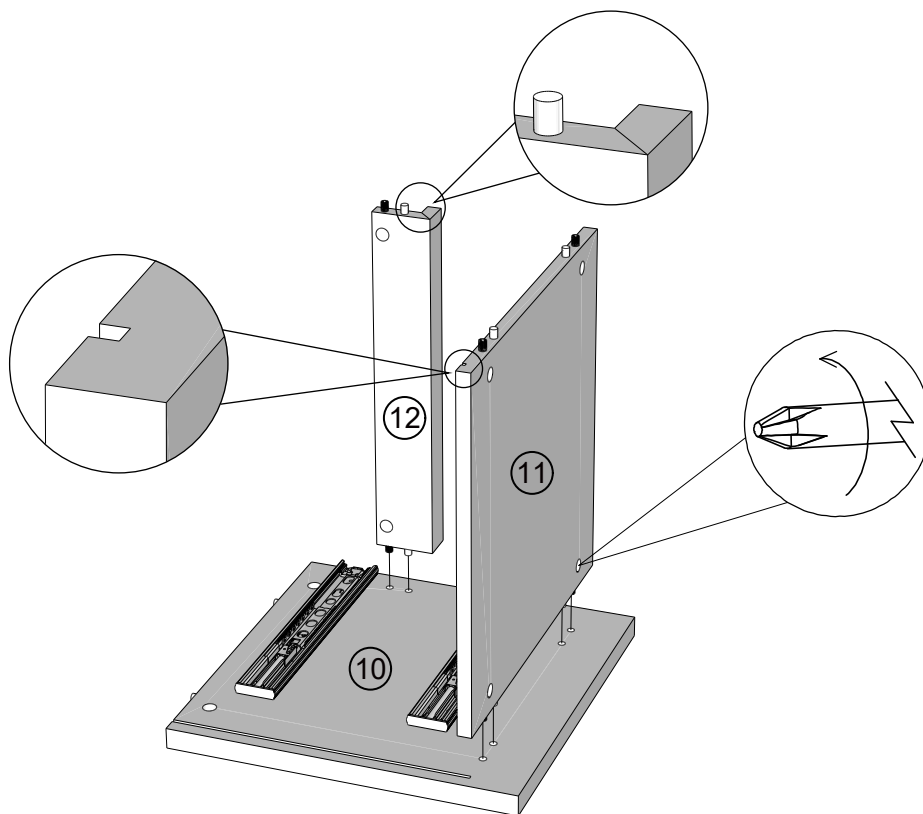
Note: Drawer will be permanently assembled once panel 9 is fitted.



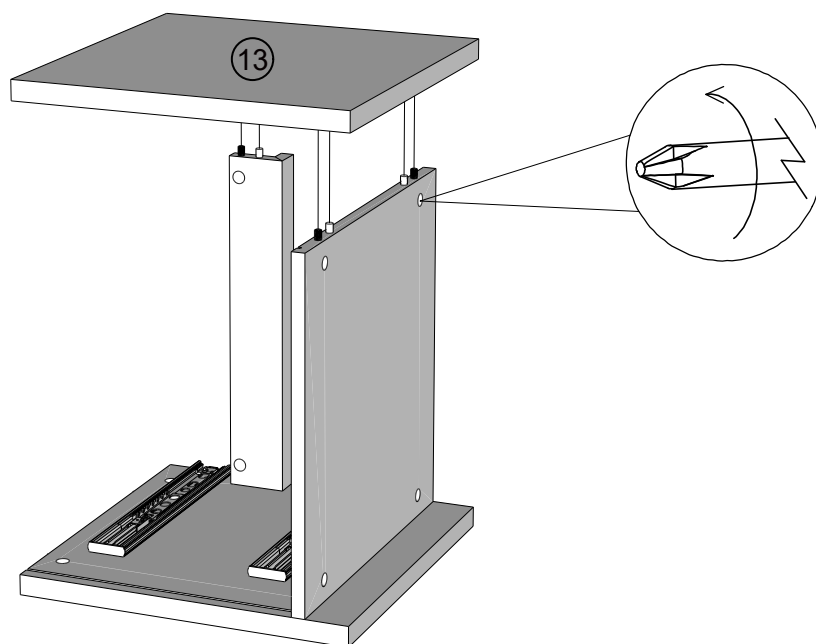
NEXT BUBBLE / BUBBLE WHITE BEDSIDE

Q93890/643921
Assembly instructions

9



10



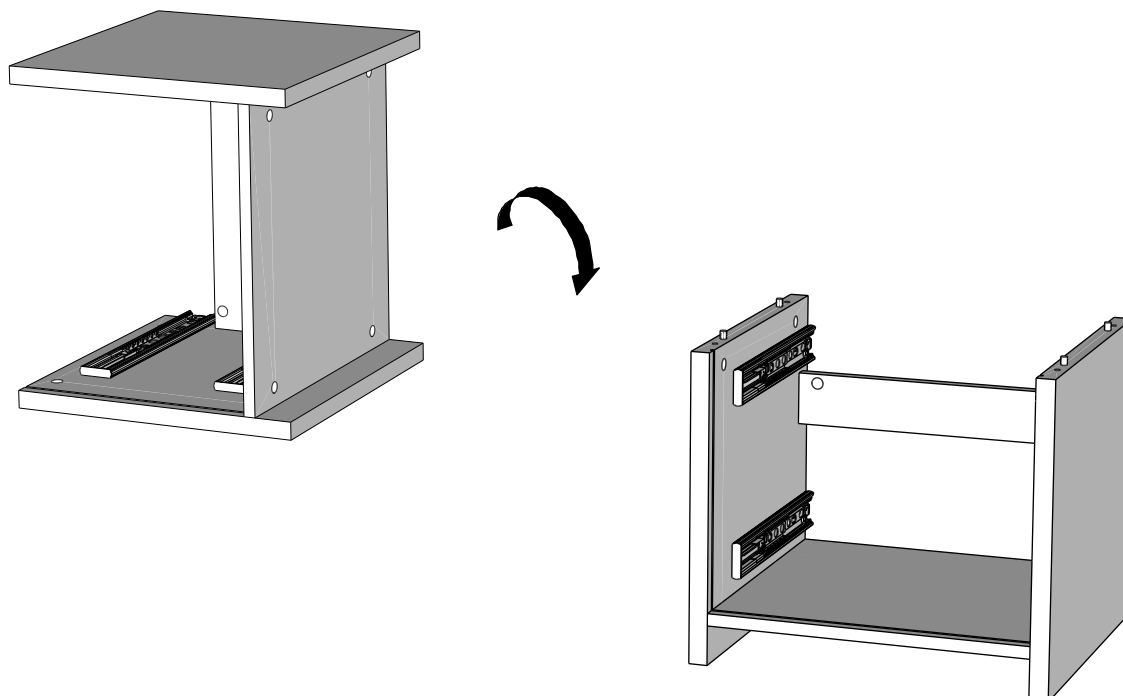
NEXT

BUBBLE / BUBBLE WHITE BEDSIDE

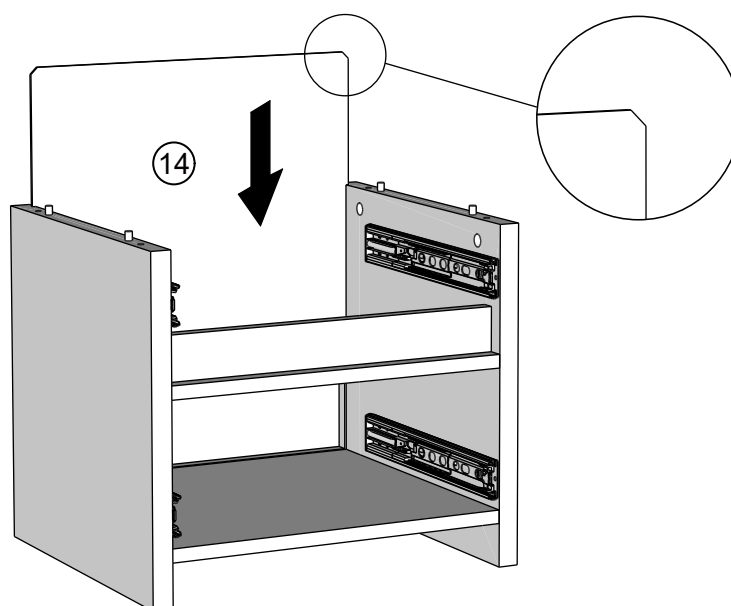
Q93890/643921

Assembly instructions

11



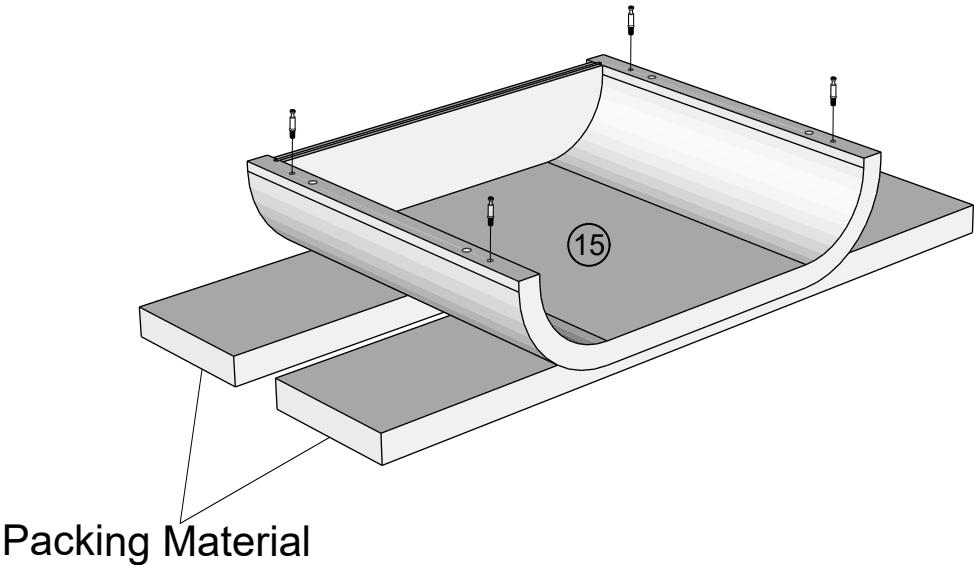
12



NEXT

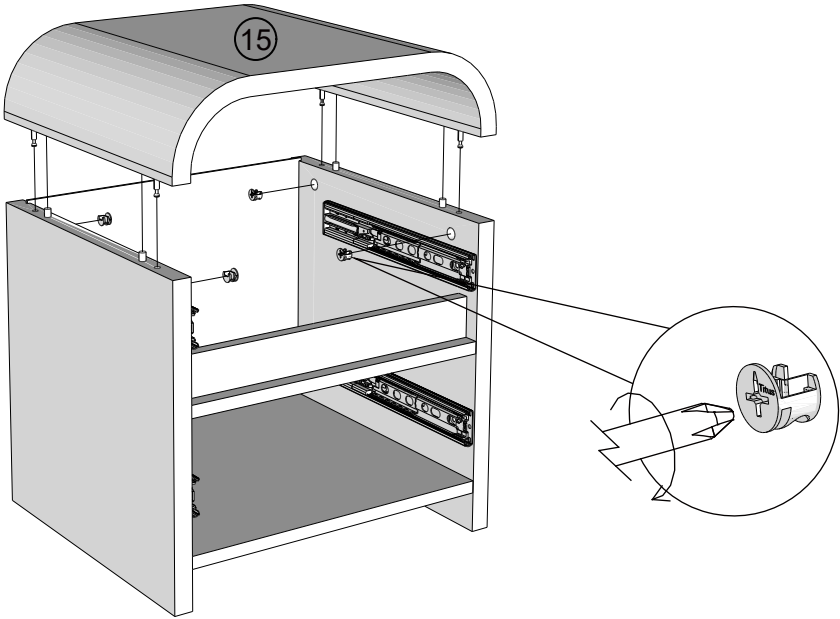
BUBBLE / BUBBLE WHITE BEDSIDE
Q93890/643921
Assembly instructions

13



| | | | | |
|-----|--------------|---|---|---|
| B12 | Ø 7.5 x 33mm | 4 |  |  not supplied |
|-----|--------------|---|---|---|

14



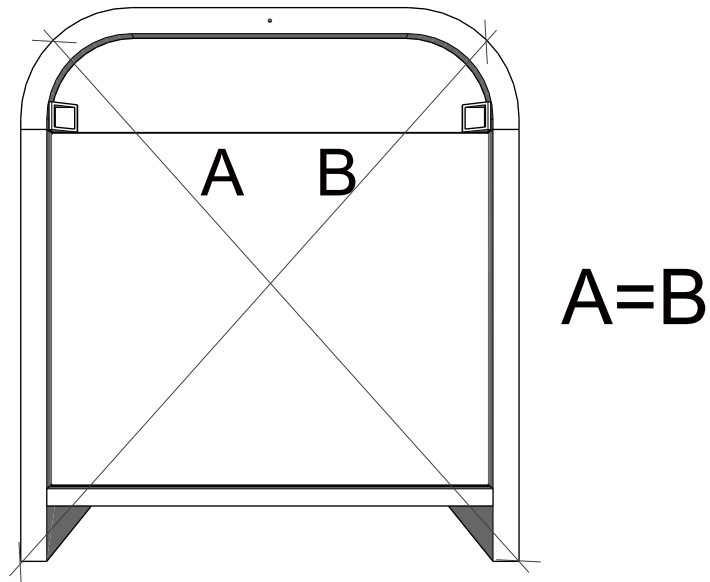
| | | | | |
|----|------------|---|---|---|
| B3 | Ø15 x 12mm | 4 |  |  not supplied |
|----|------------|---|---|---|

NEXT

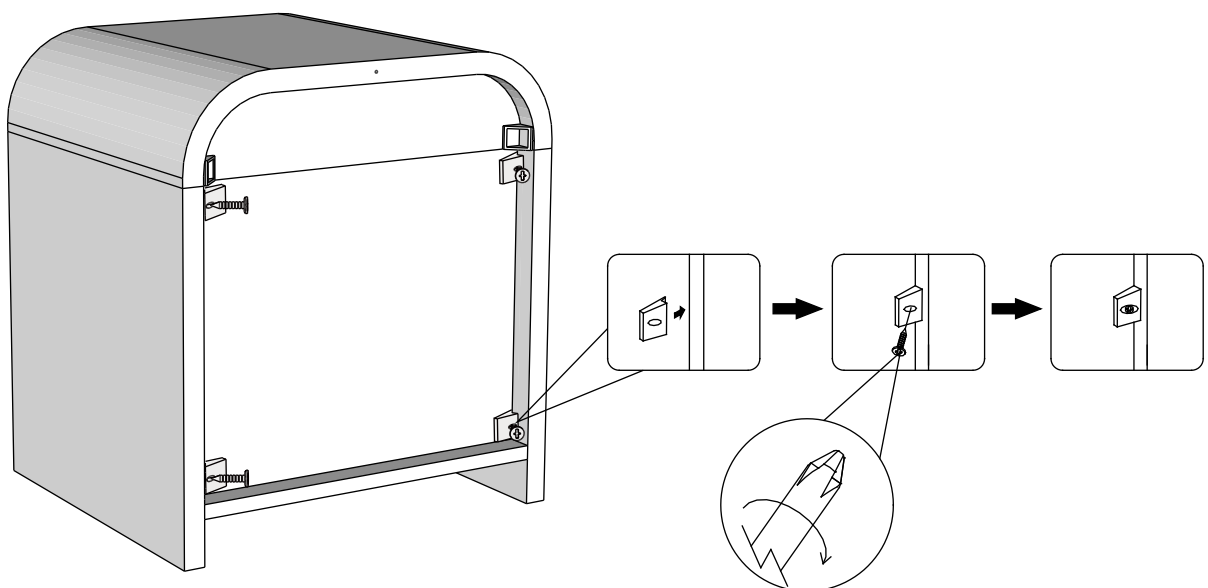
BUBBLE / BUBBLE WHITE BEDSIDE

Q93890/643921
Assembly instructions

15



16



T38

N/A

4



NEXT

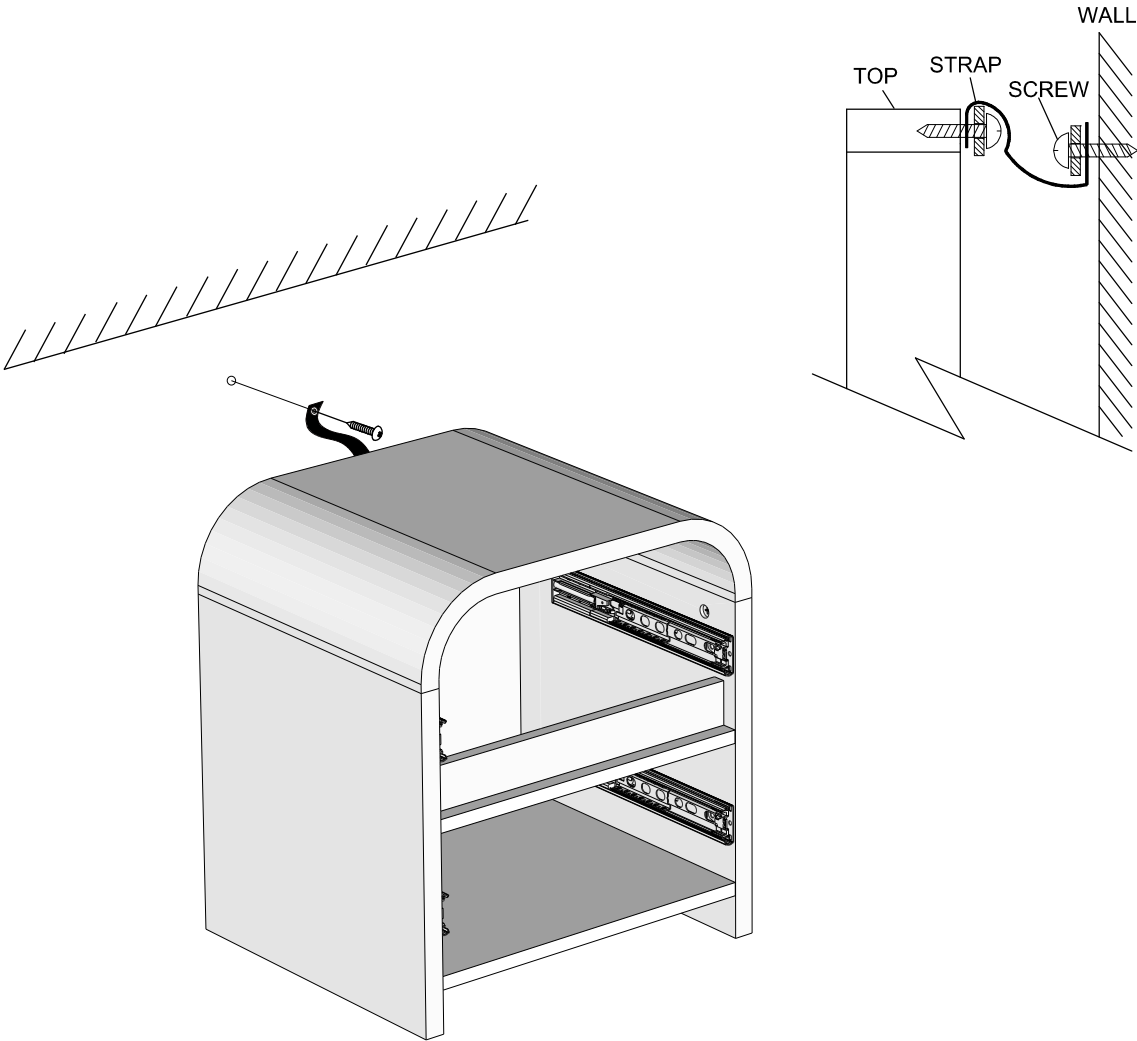
BUBBLE / BUBBLE WHITE BEDSIDE
Q93890/643921
Assembly instructions




17

We recommend the use of the wall attachment bracket/strap provided for safety reasons.
Secure the strap to the wall with an appropriate screw and wall plug for your wall type (not provided).
To hide the strap behind the unit ,drill the hole lower than the top of unit.

Attach the other end of the strap to the underside of the top panel with screw.
Warning: Always ensure intended wall area to be drilled is free from hidden electrical wires,water and gas pipes.
NB:Wall fixings are not included-Please source suitable fixing for your wall type.
If in doubt please consult a qualified trades person.

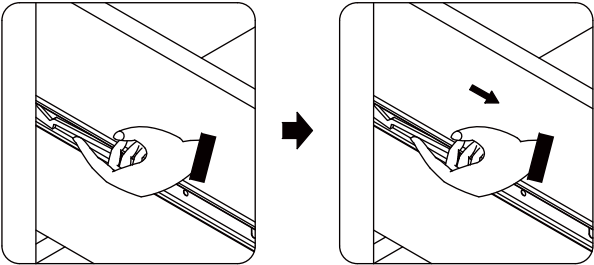
Please ensure you secure your product to the wall for your and your family's safety before you use it.



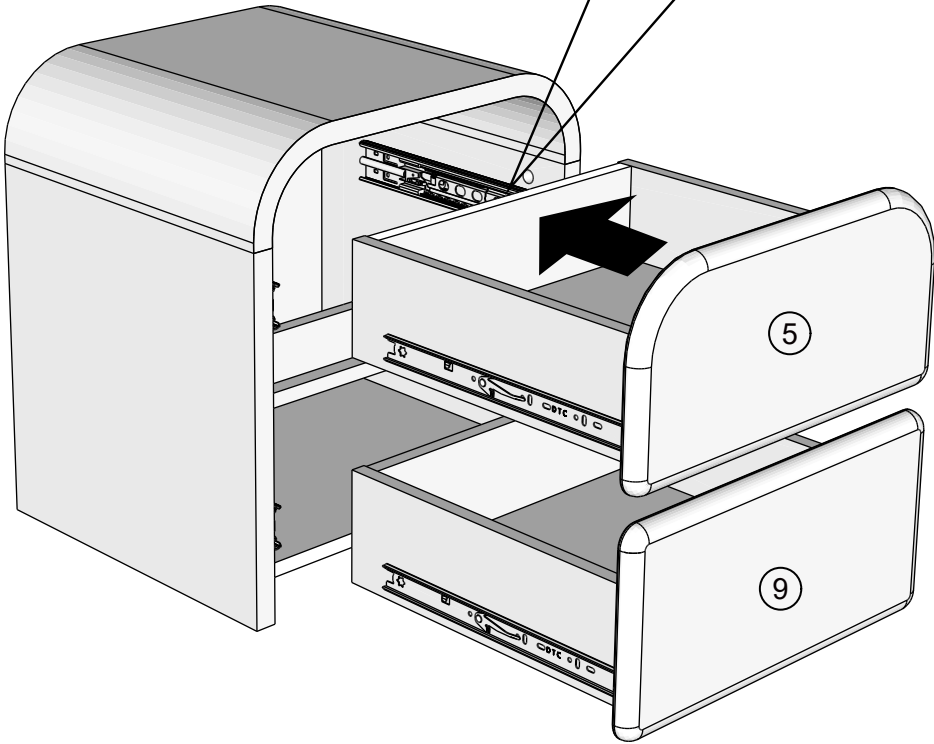
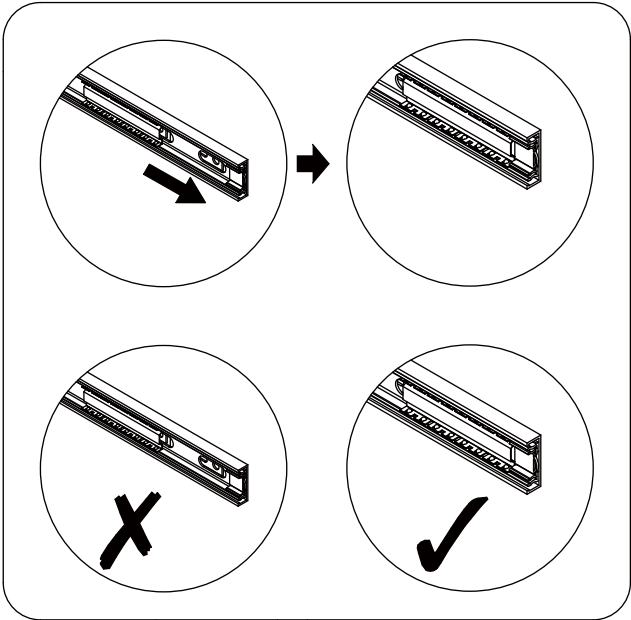
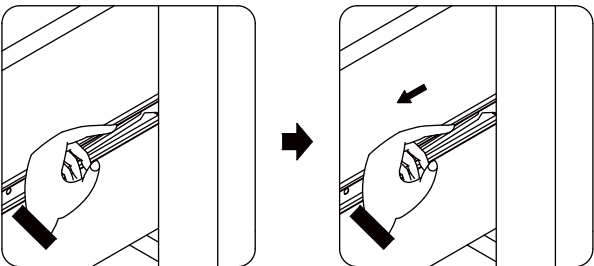
| | | | | |
|-----|-----------|---|---|---|
| S41 | Ø4 x 16mm | 1 |  |  not supplied |
| T39 | N/A | 1 |  | |

18

Left side



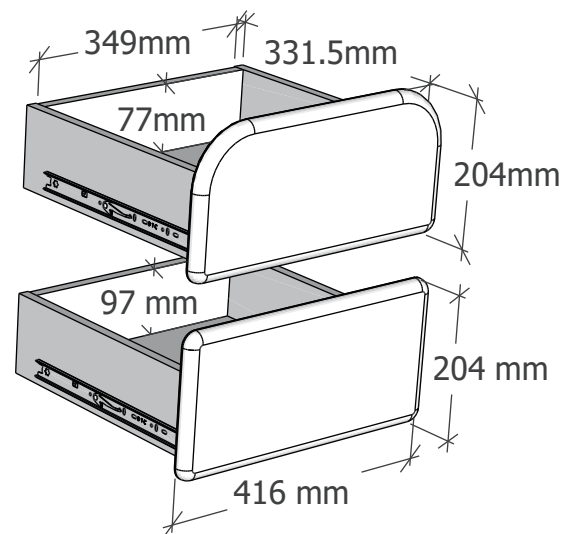
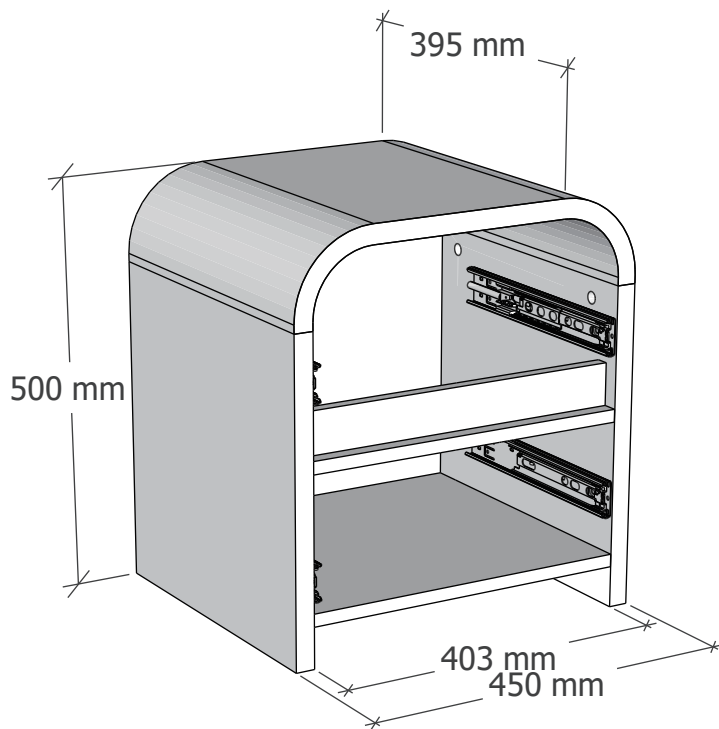
Right side



NEXT

BUBBLE / BUBBLE WHITE BEDSIDE Q93890/643921

Actual product size
H50 x W45 x D41.5 cm



NEXT BUBBLE / BUBBLE WHITE BEDSIDE

Q93890/643921

Warnings

We suggest you retain these instructions for future reference

Keep fittings out of children's reach and keep children well away from the construction area

This product should only be used on firm, level ground

Please periodically check all fittings and re-tighten as necessary

Please do not sit or stand on your furniture

Avoid exposing the furniture to excessive heat or direct sunlight as this can cause deterioration of the colour

Unwrap all packaging materials and place the components on top of the carton box or on a clean floor to protect it from damage.

Production information

This bedside conforms to FIRA FRQG C001:2021, FIRA FRQG C004:2016+A1:2017

This product is suitable for children in the age 6-12 years

The maximum load weight is 20kg

Regularly check all fastenings to ensure that they property tightened

Wipe occasionally with a soft cloth slightly dampened with water. Then buff with a dry clean soft cloth.

Ensure that fingers and legs are clear of all adjusiments when adjusting this product

Installation shall be carried out exactly according to the instructions-otherwise a safety risk can occur if incorrectly installed

Missing parts

If you are missing any fixtures and fittings for your product.

Please contact our customer service team on 0333 777 8999

and they will be happy to arrange for a replacement to be sent to you free of charge.

Home service technicians

If you have a fault with your product, please contact our customer service team on 0333 777 8999. If you have had the product for 28 days or less you may be offered a replacement,refund or for a fully trained home service technician to visit your home to assess the fault and repair the product where possible. If you have had the product for more than 28 days we will send an independant home service technician to review and repair the product where possible and recommend further action.

You can write to us at

Home Customer Services
Next Retail Ltd.
Desford Road,
Leicester,
LE19 4AT

To view our full furniture range please visit www.next.co.uk

PRODUCT SUPPLIED WITH WALL FIXING STRAPS