

NEXT

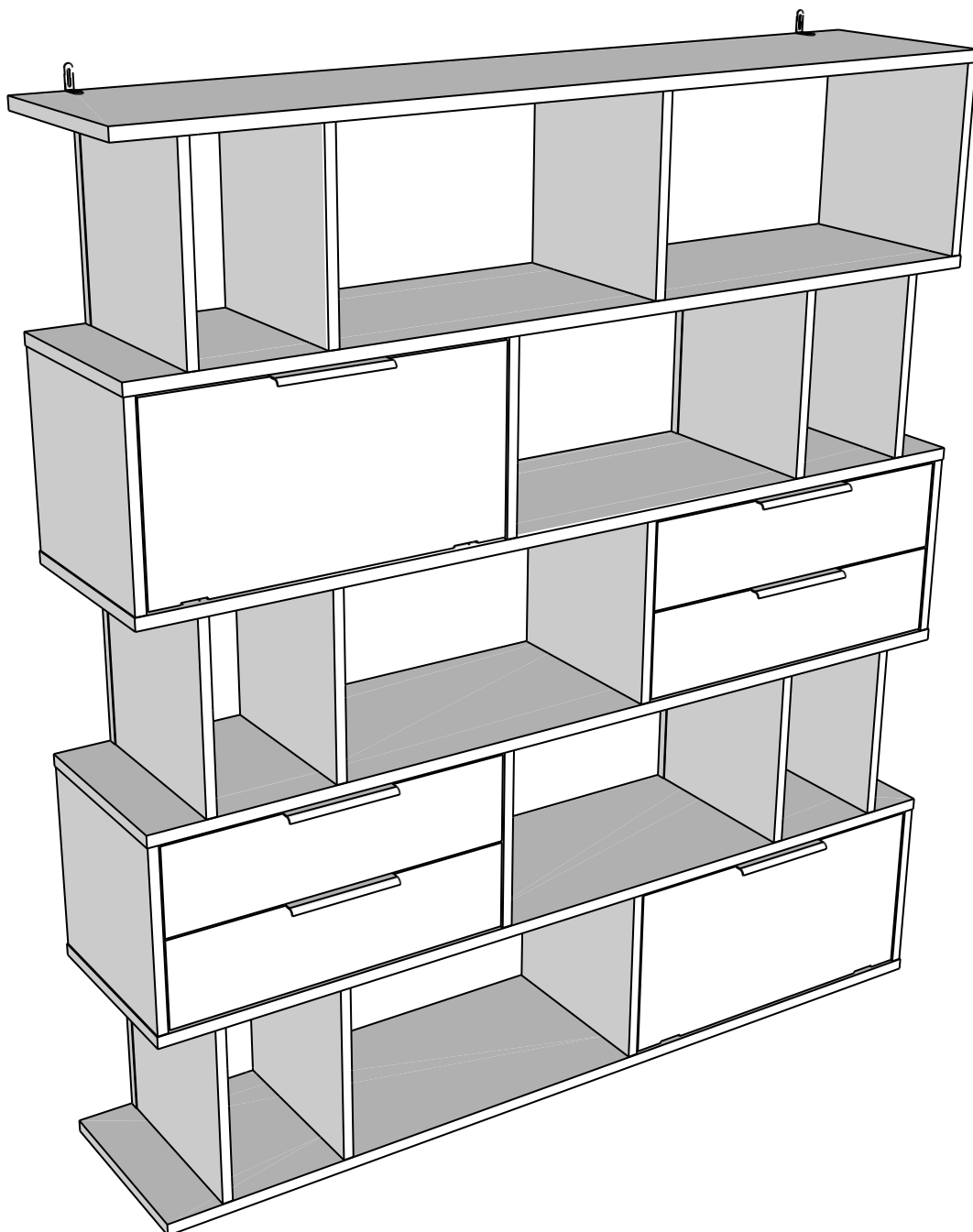
BRONX SUPERWIDE STORAGE SHELVING

AT1955

Assembly instructions

Actual product size

H177.5 x W160 x D 35 cm



Need Help ?

With: Assembly instruction

Missing or damaged parts

IMPORTANT - RETAIN FOR FUTURE REFERENCE

CALL: 0333 777 8999

BEFORE YOU START

Number of people required to assemble

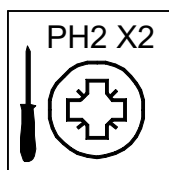
Two people are required to assemble this item



Time to assemble : 30 minutes



Tools required



not supplied

Do's

We suggest you spend a short time reading through this leaflet before you start.

When you are ready to start, make sure that you have the right tools and plenty of space.

Unwrap all packaging materials and place the components on a clean surface to protect it from damage, We recommend that the packaging is used to protect the surfaces during assembly.

Carefully check that you have all the parts before beginning assembly.

Due to the size of this product we recommend that it is assembled in the room intended for use.

Ensure the product is fully assembled as illustrated and all fixings fully tightened before use.

Wipe occasionally with a soft cloth slightly dampened with water. Then buff with a dry clean soft cloth.

Wood will mellow and change colour over time, we recommend that ornaments and items placed on the surface are moved regularly for the first few months to prevent uneven mellowing.

Don'ts

Do not drag or pull your furniture.

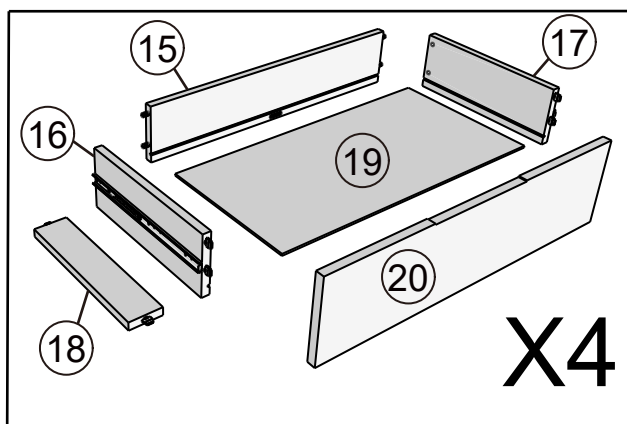
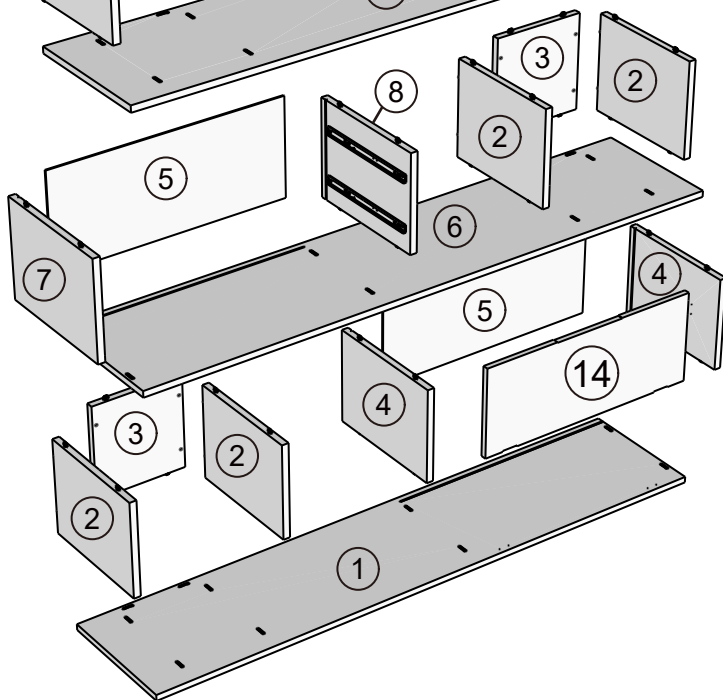
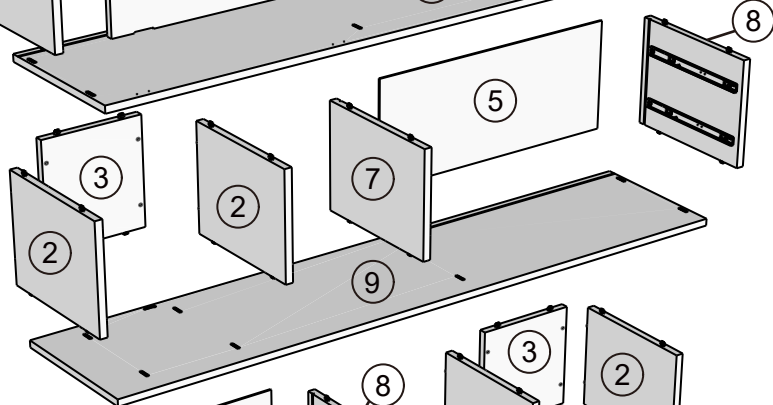
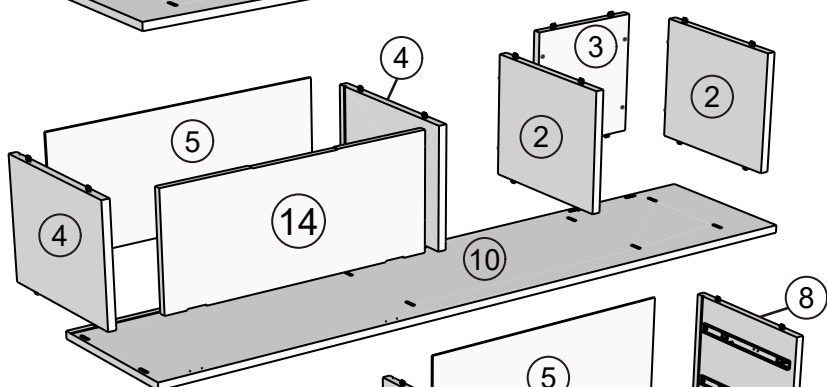
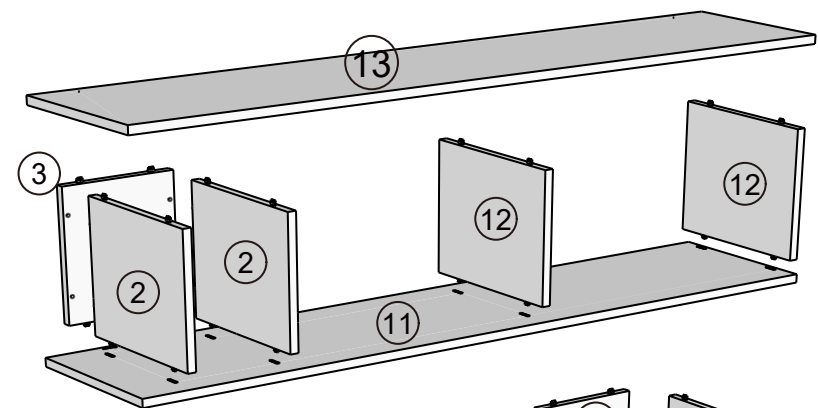
Do not rub or scrub the surface when cleaning.

Do not use silicone based furniture polish. Silicone in furniture polishes can break down the finish.

Never allow any kind of liquid to remain on your furniture.
Absorption can cause wood to warp or finishes to de-laminate.

Do not place hot items (e.g. hot drinks) directly on to the wood surface. Please make sure you use a placemat or coaster.

GETTING TO KNOW YOUR PRODUCT

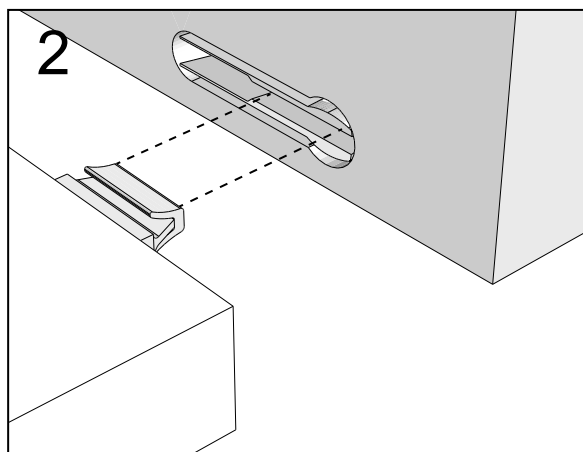
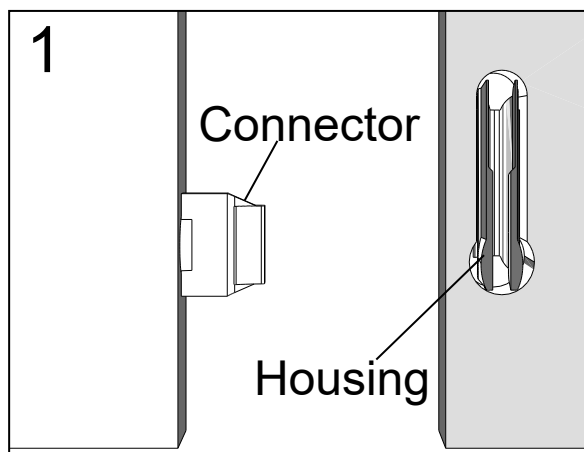


Components supplied. Please use this guide if you require replacement parts.

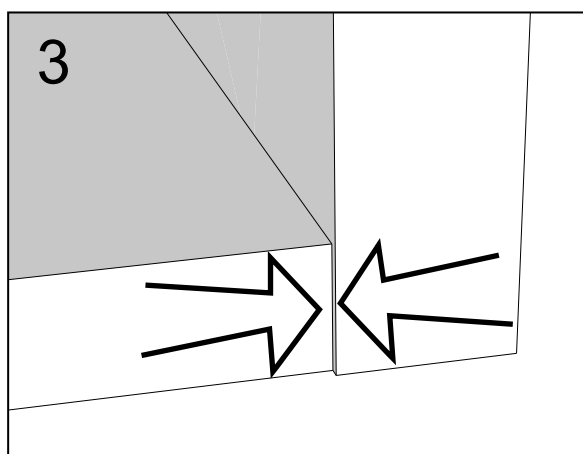
Ref	Dimensions	Visual	Qty	Ctn
1	35x160cm		1	1
2	33x33cm		10	2
3	25x33cm		5	3
4	33x34.5cm		4	3
5	33.5x64cm		4	1
6	35x160cm		1	1
7	33x34.5cm		2	1
8	33x34.5cm		2	1
9	35x160cm		1	2
10	35x160cm		1	2

Ref	Dimensions	Visual	Qty	Ctn
11	35x160cm		1	2
12	33x34.5cm		2	3
13	35x141cm		1	1
14	32x62.5cm		2	3
15	11.5x58cm		4	3
16	11.5x30cm		4	1
17	11.5x30cm		4	1
18	6x28cm		4	1
19	29x58.5cm		4	2
20	16x62.5cm		4	3

NEXT FITTINGS ASSEMBLE INSTRUCTIONS



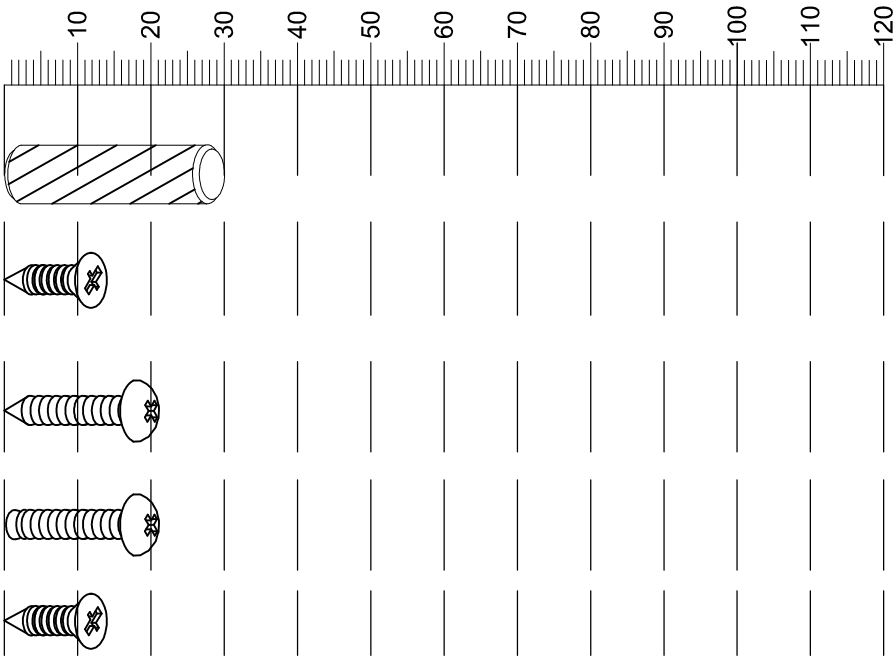
Push connector into housing to be jointed.



Make sure there is no gap between the panels.

Fixtures and fittings
supplied (actual size)

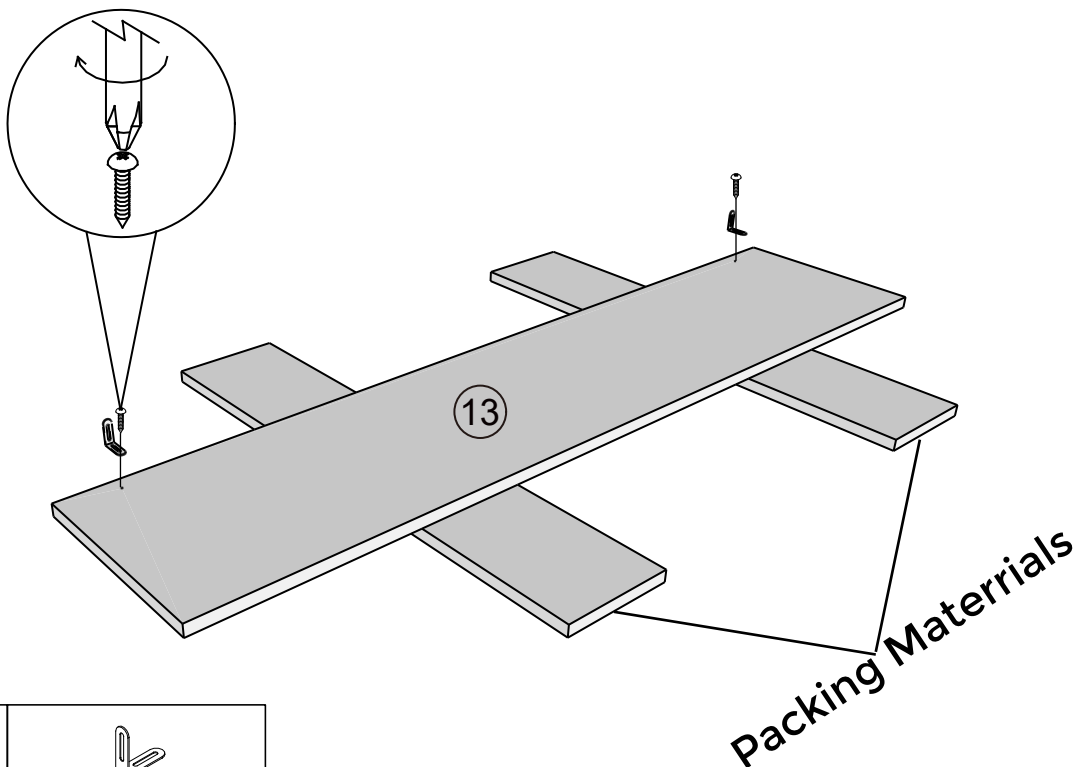
Ref	Dimensions	Qty	Spare Qty
D6	Ø8 x 30mm	N/A	1
U136	Ø4 x 14mm	16	2
S41	Ø4 x 16mm	2	1
S42	Ø4 x 16mm	4	1
U143	Ø4 x 14mm	16	2



Fixtures and fittings supplied (not to scale)

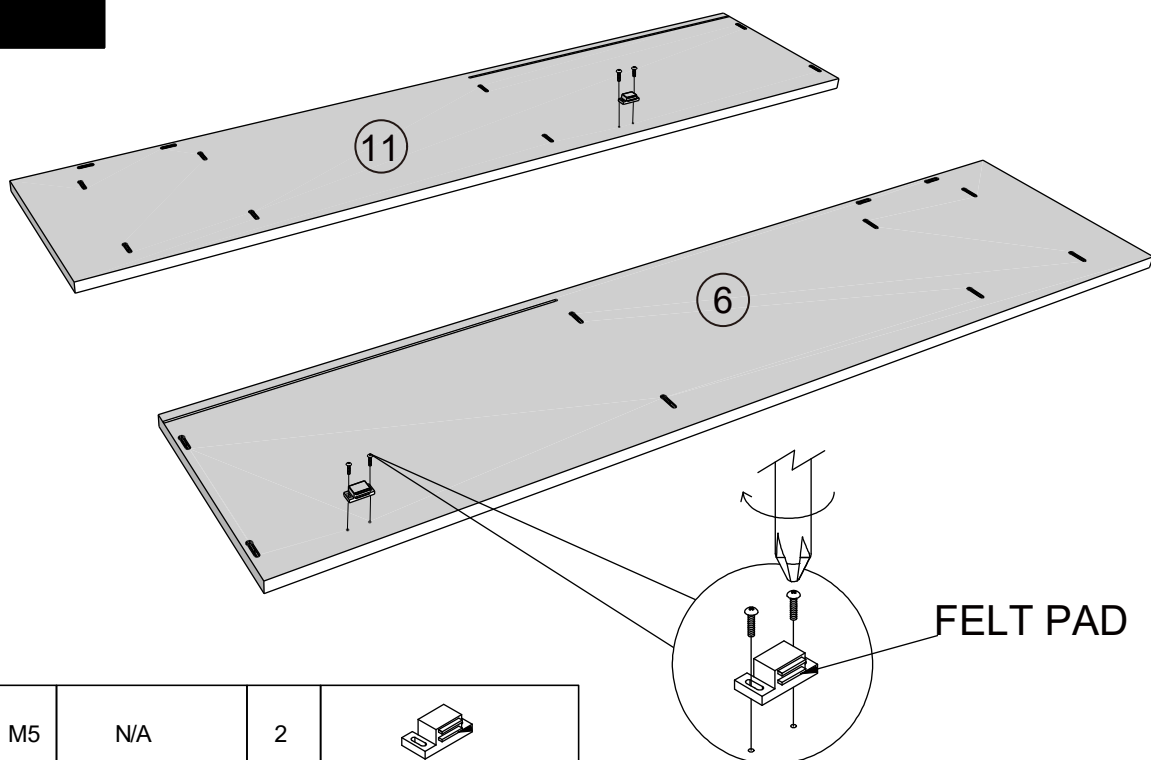
Ref	Dimensions	Qty	Spare Qty	Visual
H32	N/A	4	N/A	
M5	N/A	2	N/A	
N1	N/A	2	N/A	
E39	N/A	6	N/A	
H38	N/A	4	N/A	
T38	N/A	16	2	

1

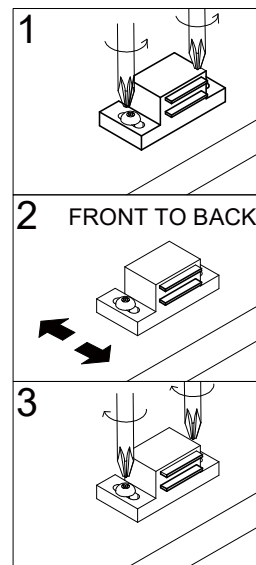


N1	N/A	2	
S41	Ø4 x 16mm	2	

2

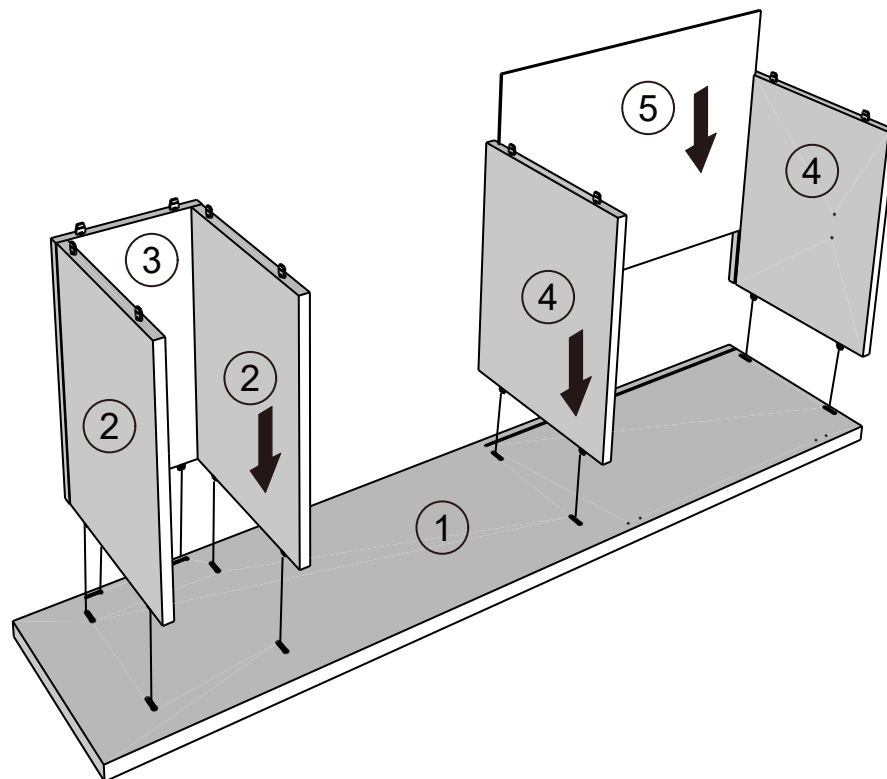
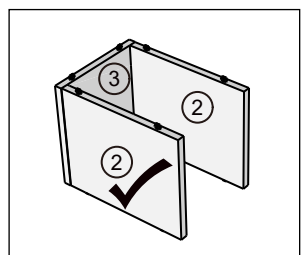
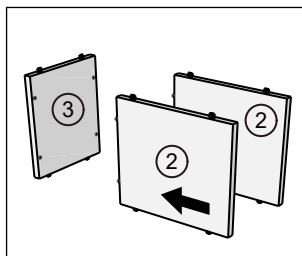


M5	N/A	2	
S42	Ø4 x 16mm	4	

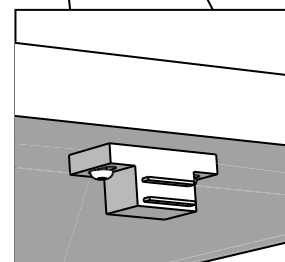
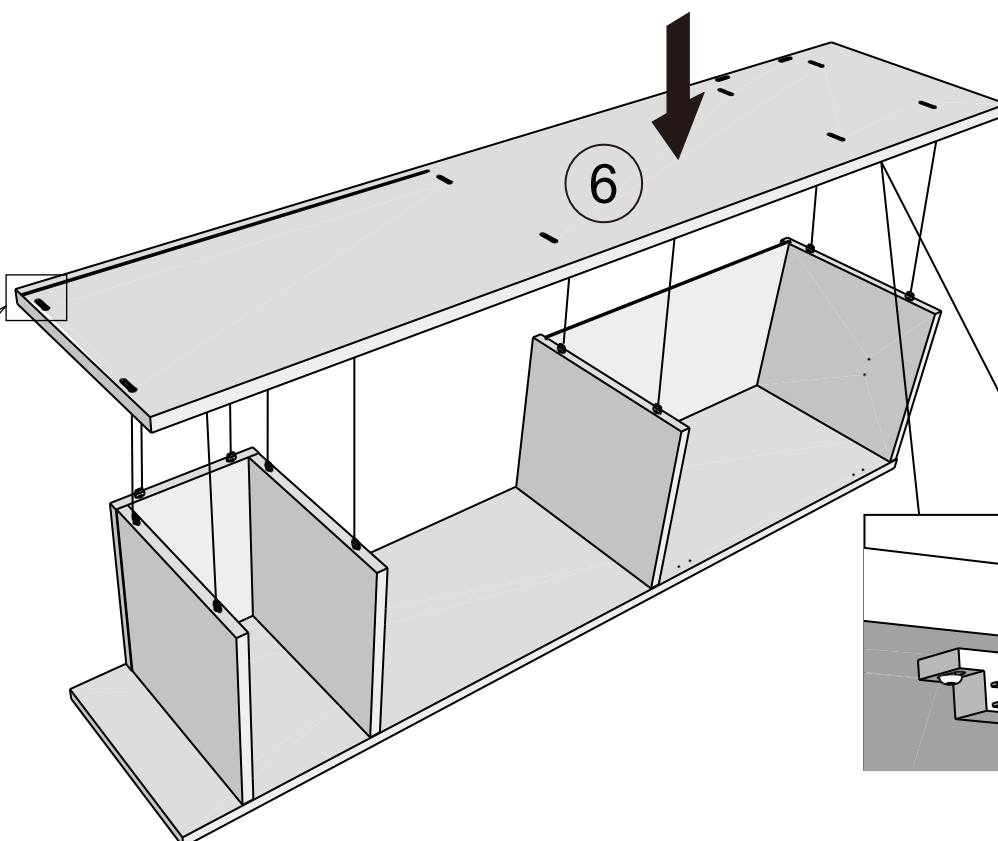
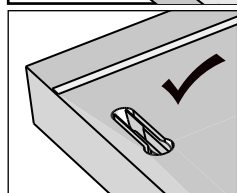
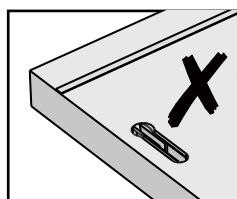


3

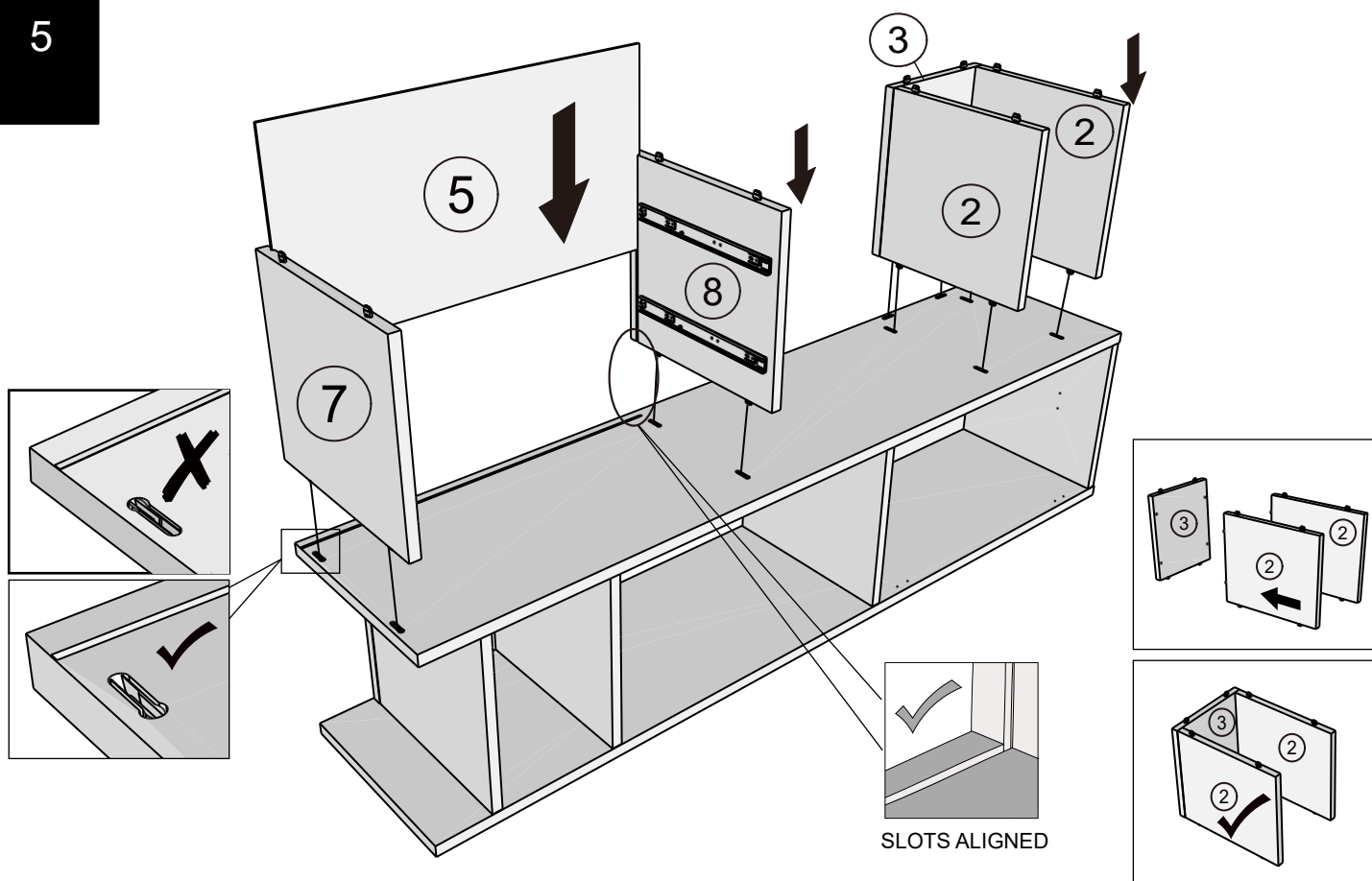
Note: Thid item will be permanently assembled once panels fitted.



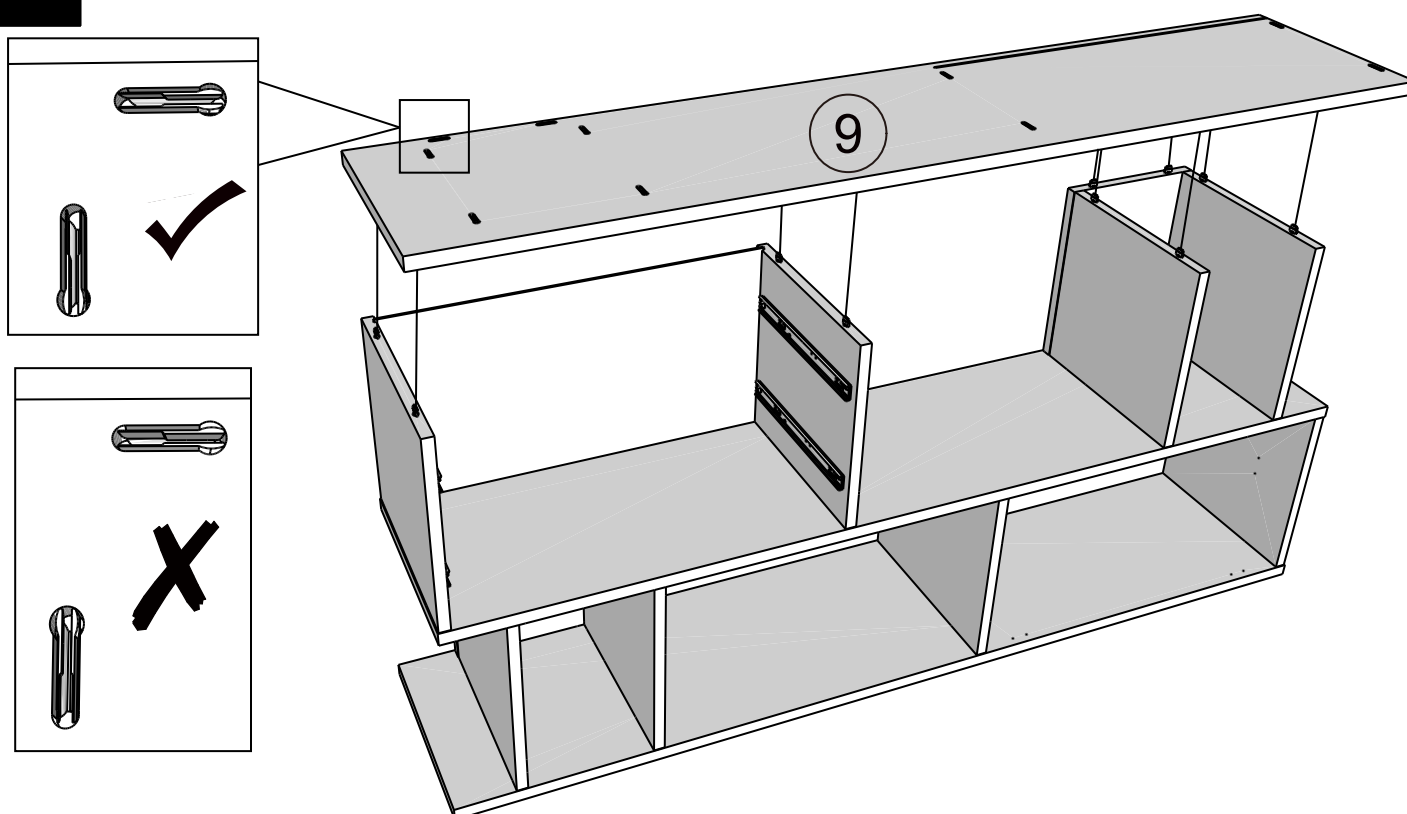
4



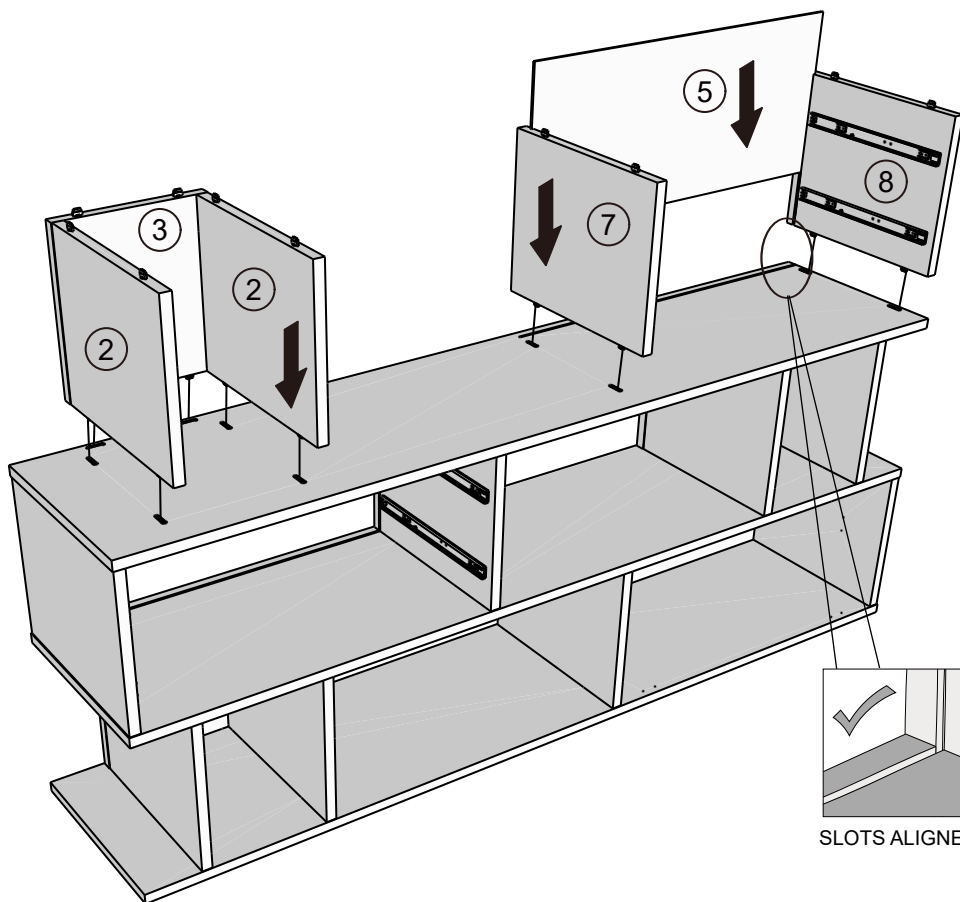
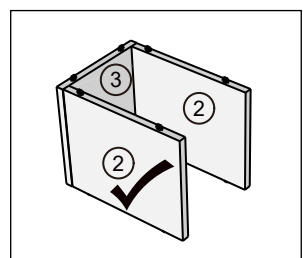
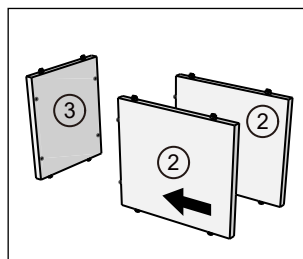
5



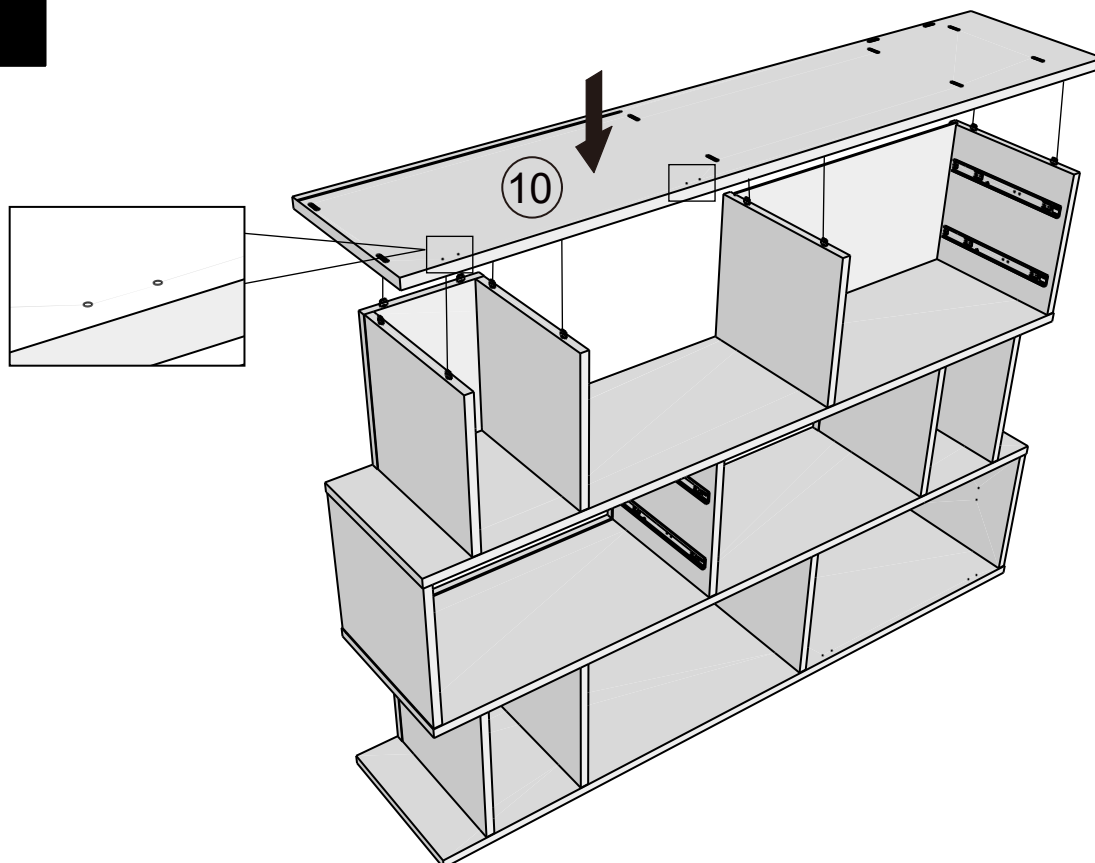
6



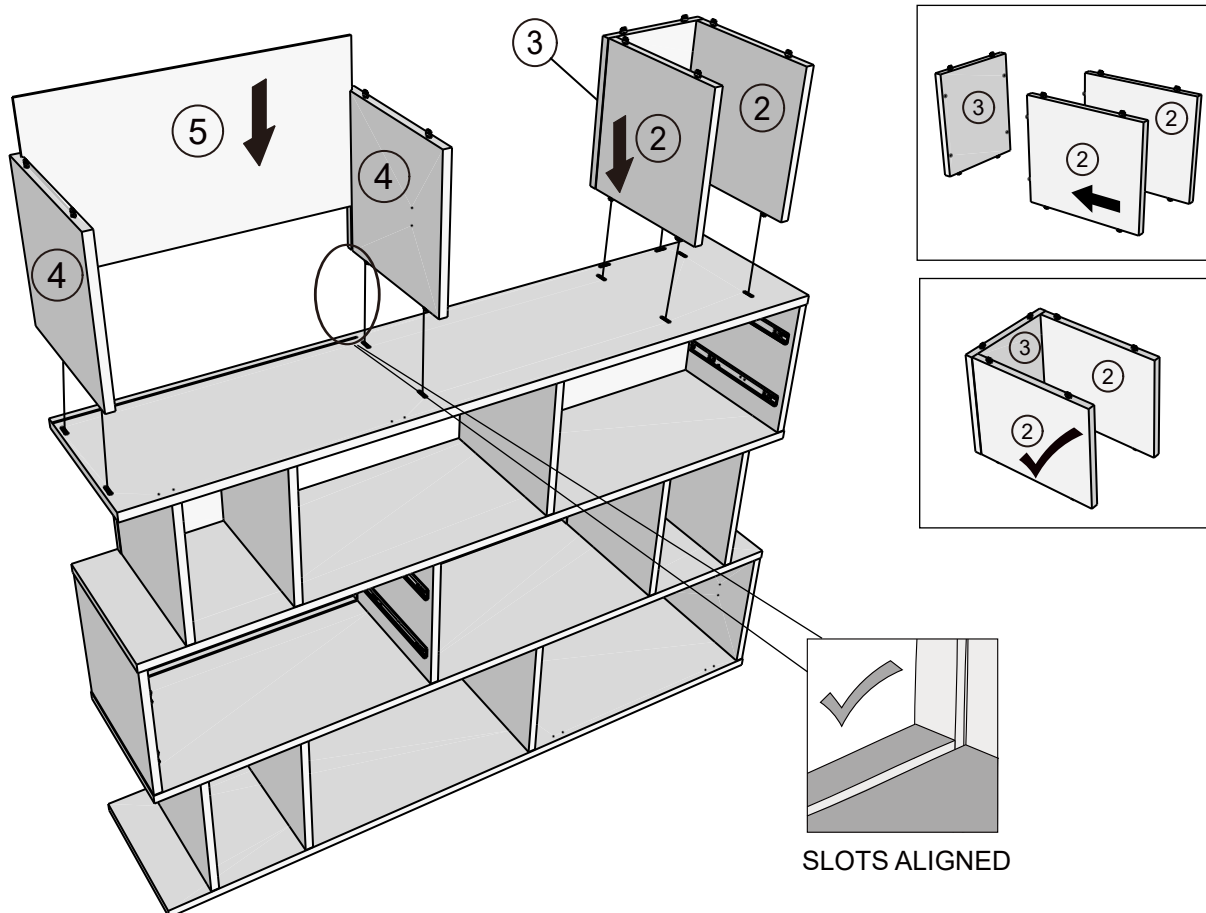
7



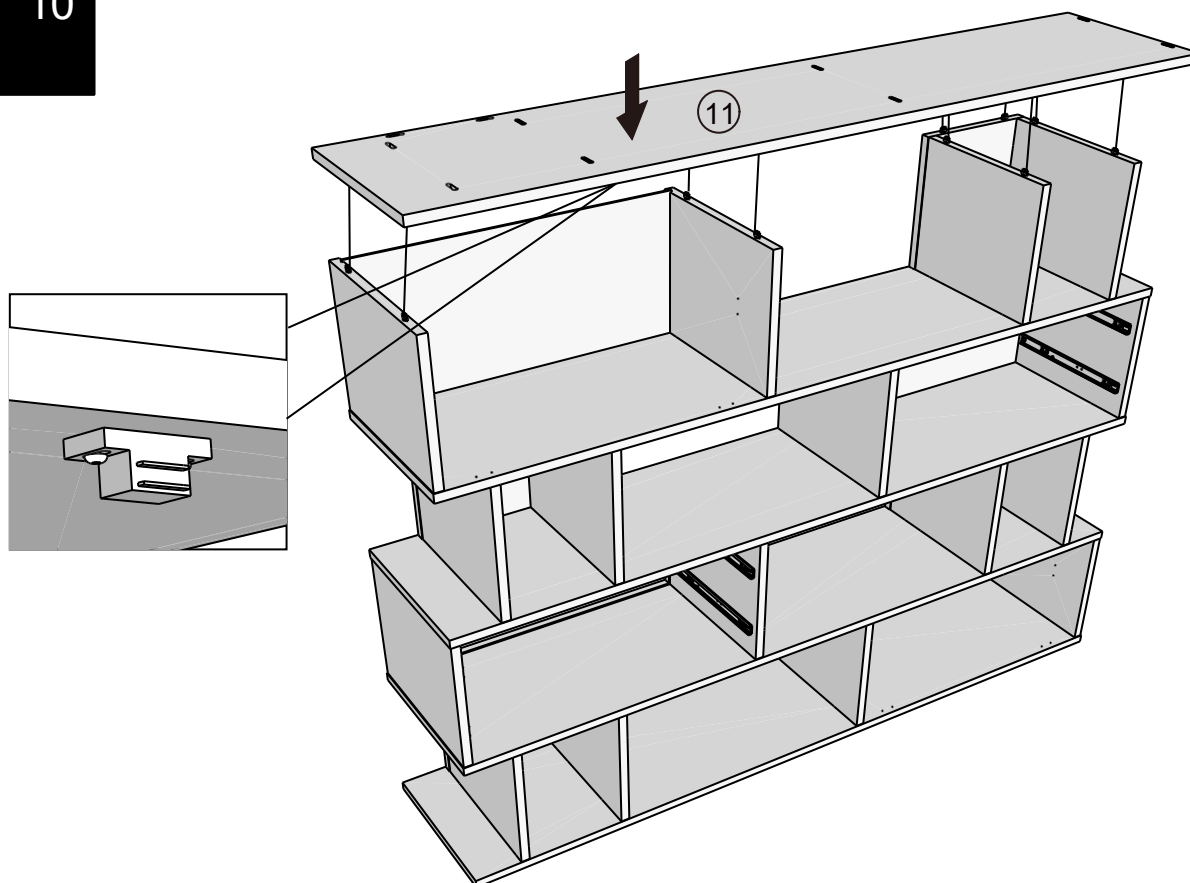
8



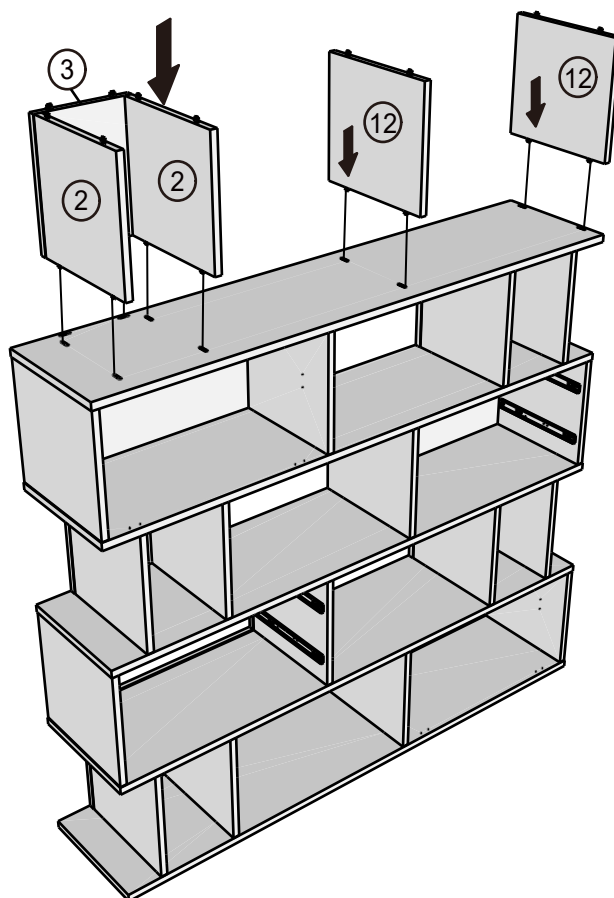
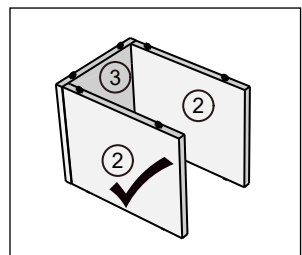
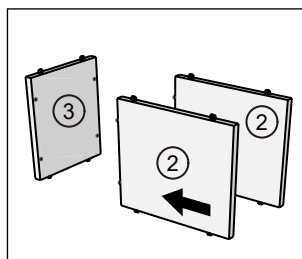
9



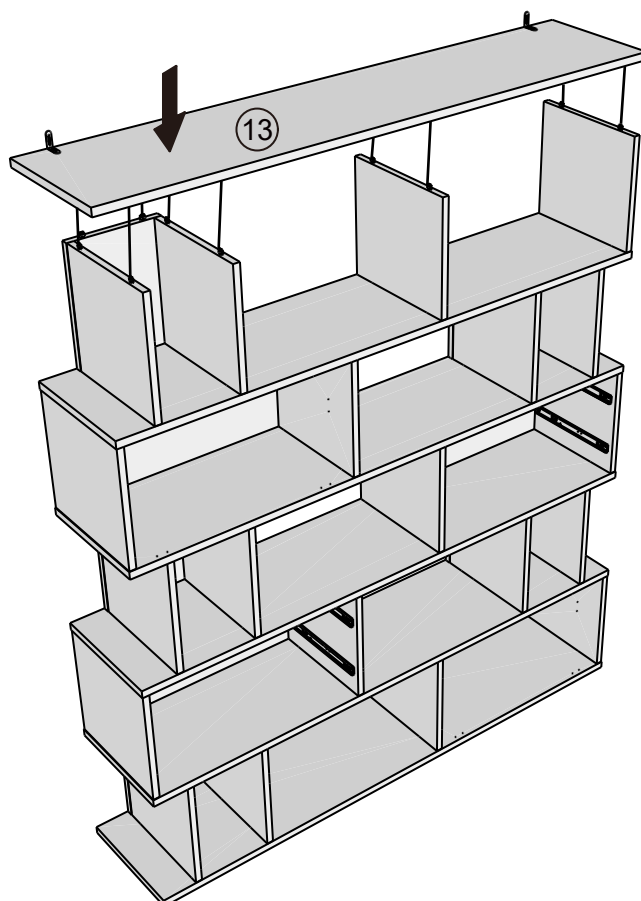
10



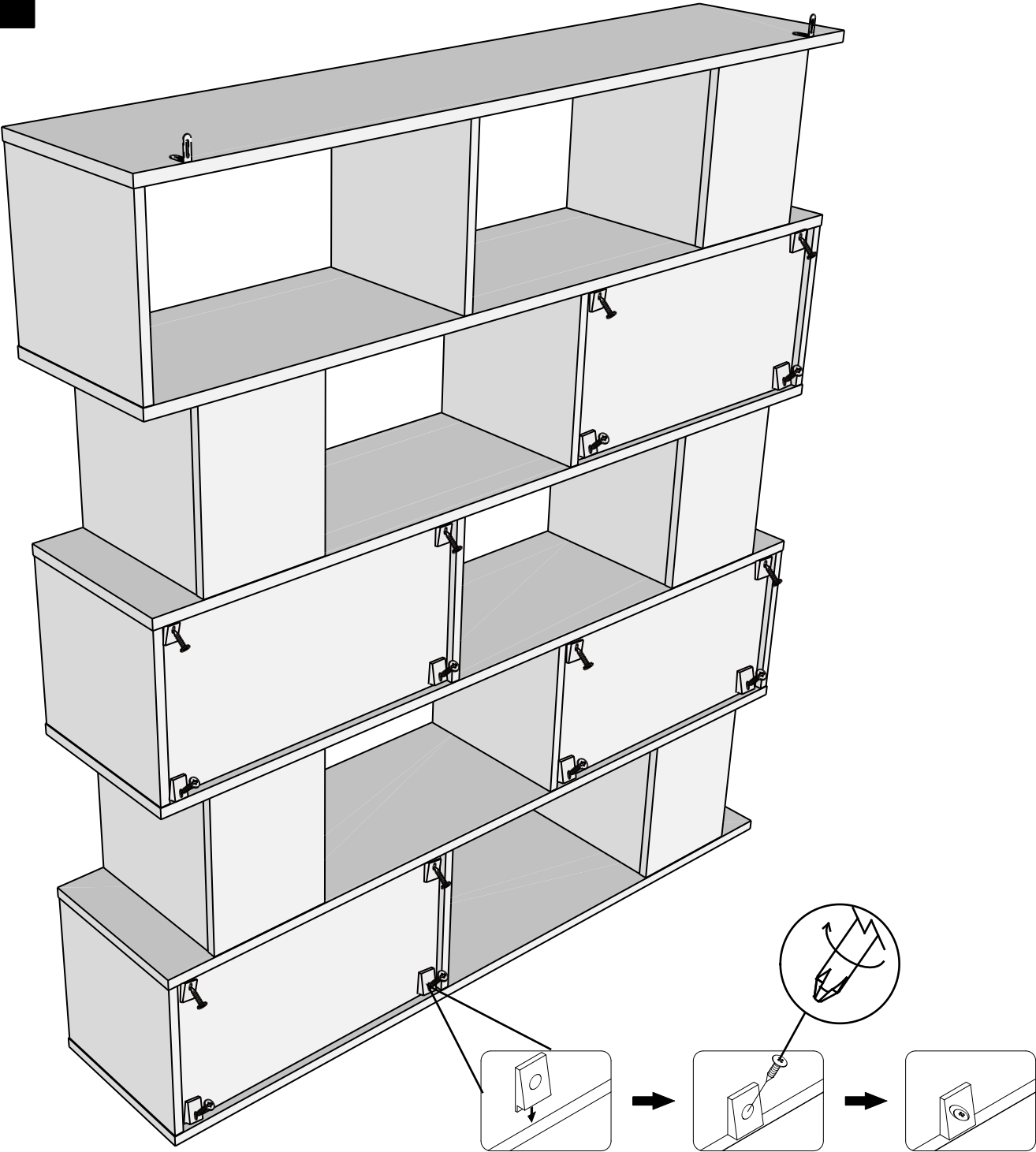
11



12



13



T38

N/A

16



not supplied

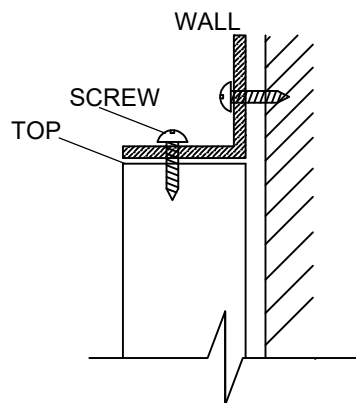
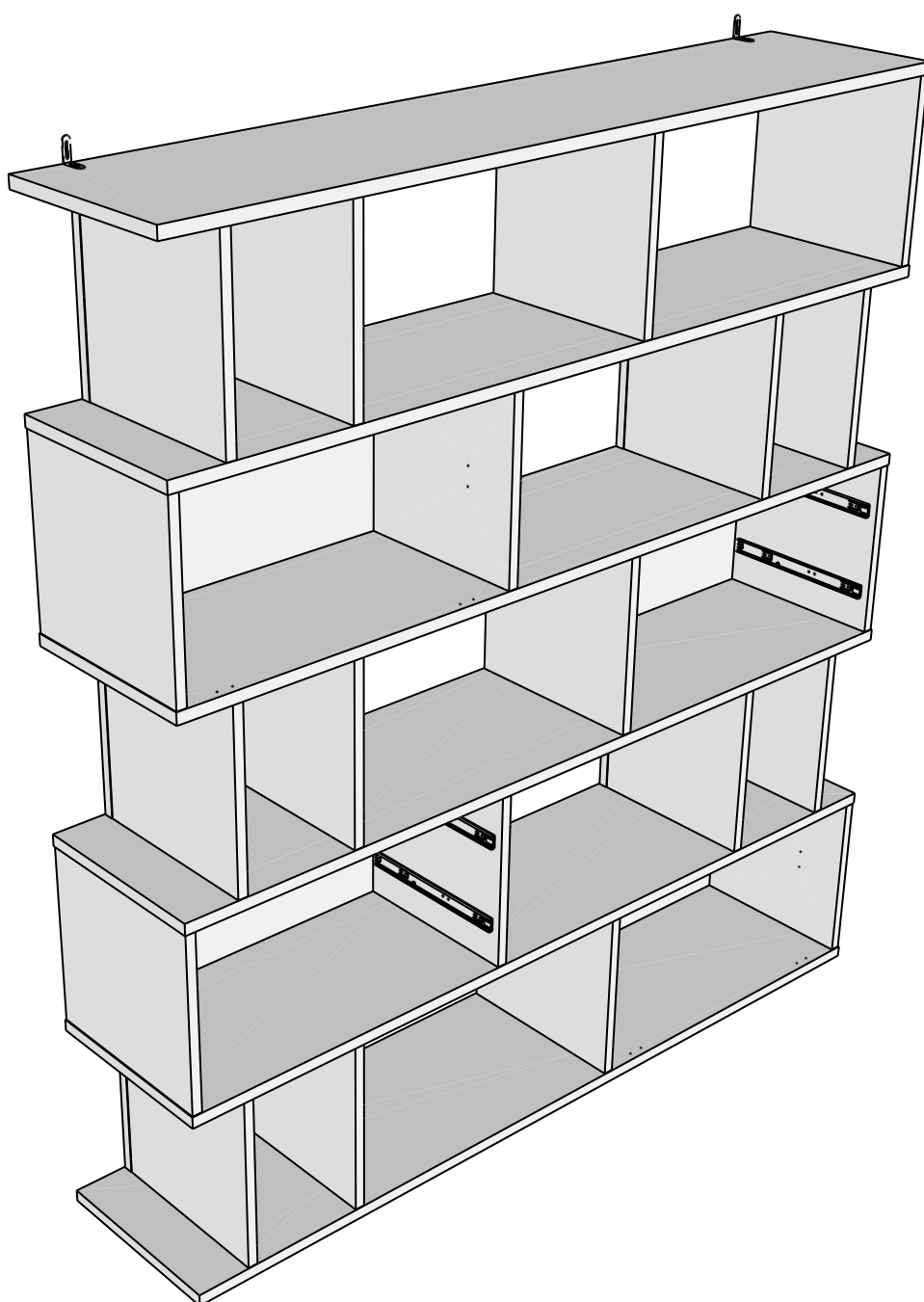
14

We recommend the use of the wall attachment bracket/strap provided for safety reasons. Move unit into desired position. Secure the 2X"L" metal brackets to the wall with an appropriate screw and wall plug for your wall type (not provided).

Warning: Always ensure intended wall area to be drilled is free from hidden electrical wires, water and gas pipes.

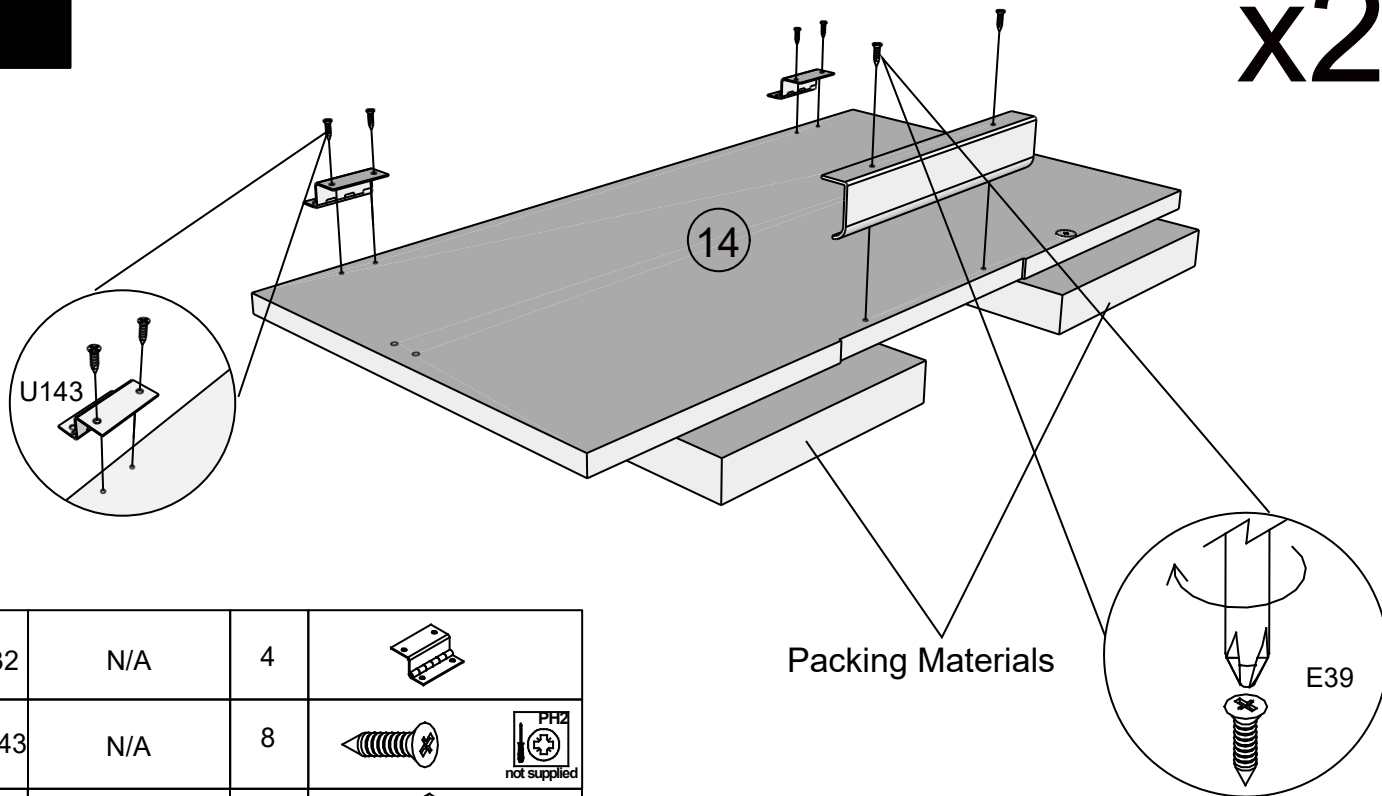
NB: Wall fixings are not included-Please source suitable fixing for your wall type.


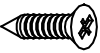



If in doubt please consult a qualified trades person.



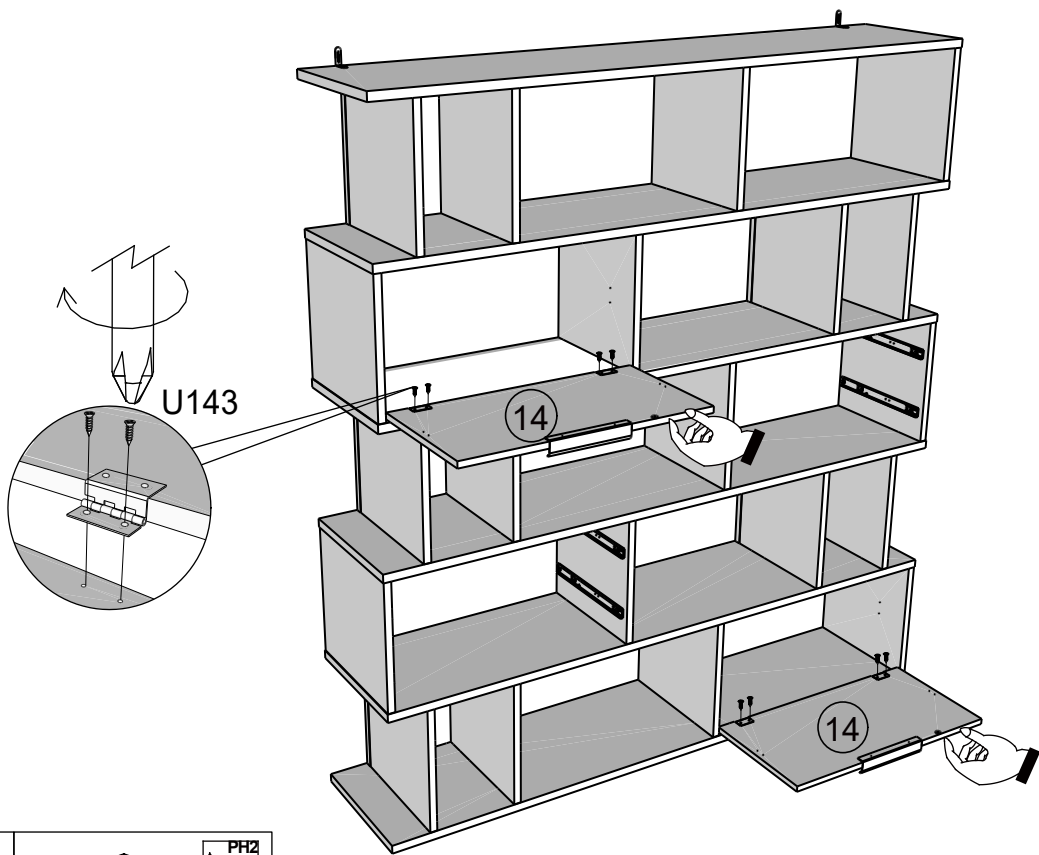
15



x2

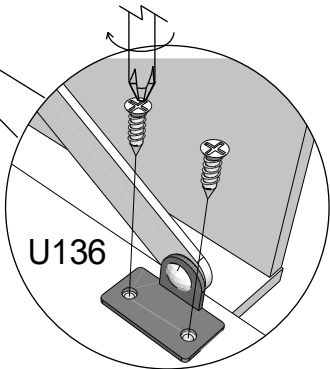
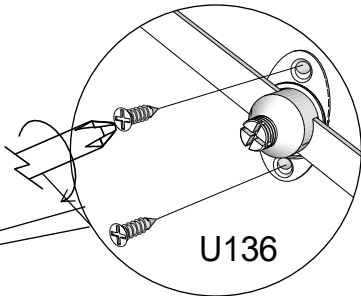
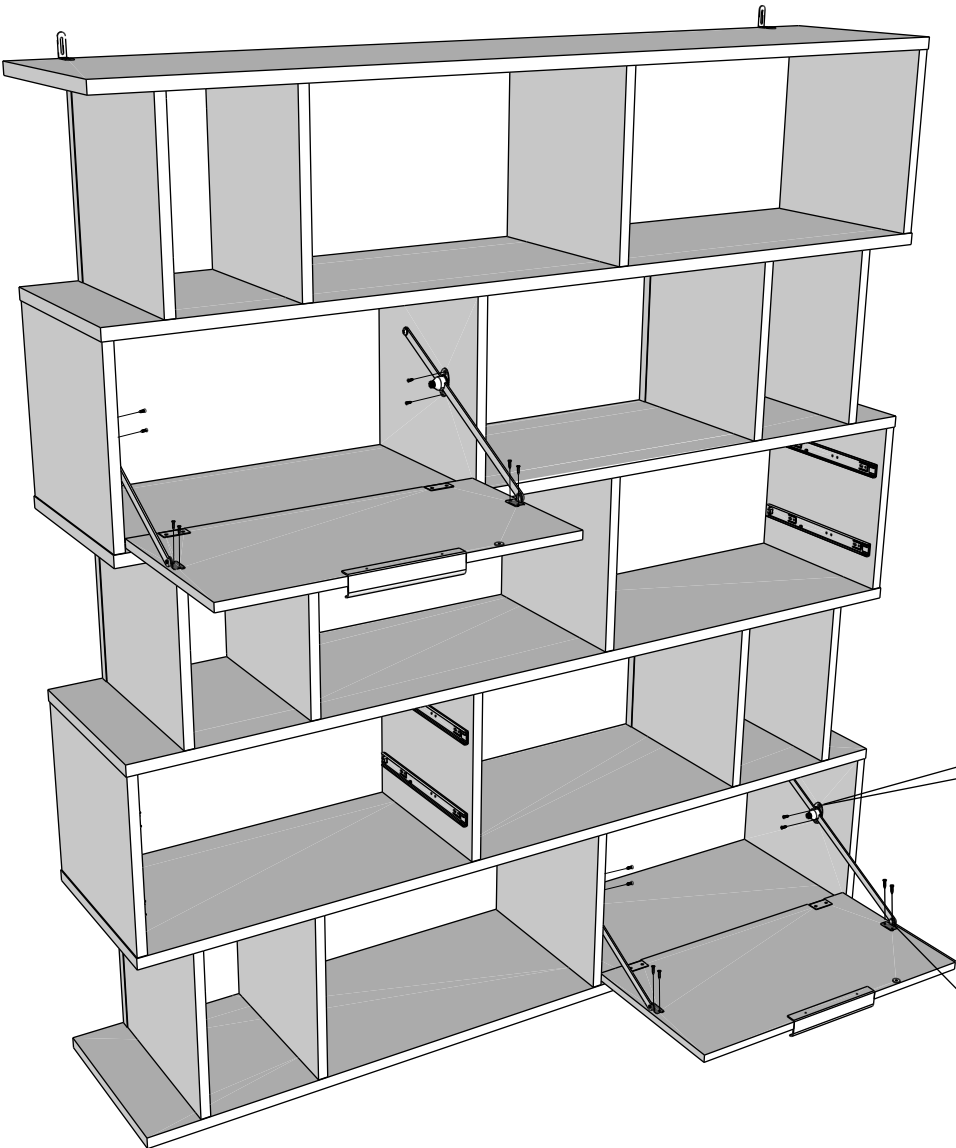


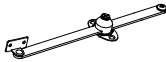
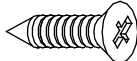
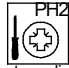
H32	N/A	4	
U143	N/A	8	  not supplied
E39	N/A	2	  not supplied

16

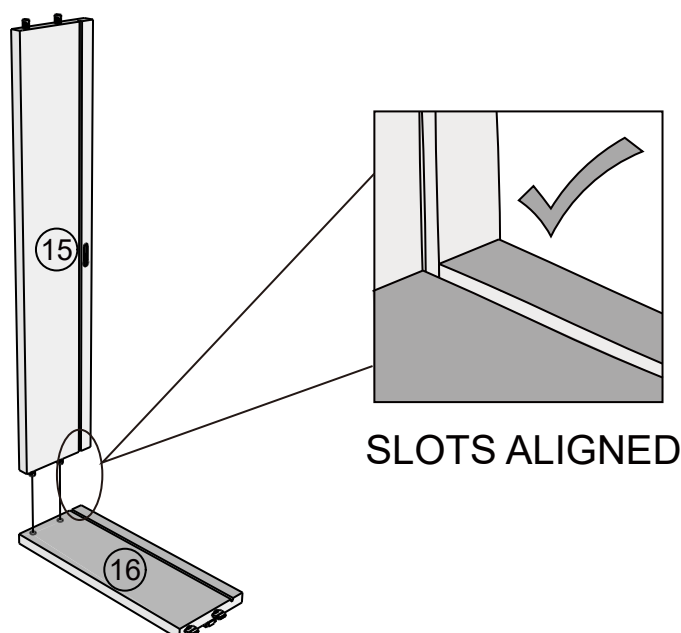


U143	N/A	8	  not supplied
------	-----	---	-----------------------------------------------------------------------------------------------------------------------------------------------------------------------------------------



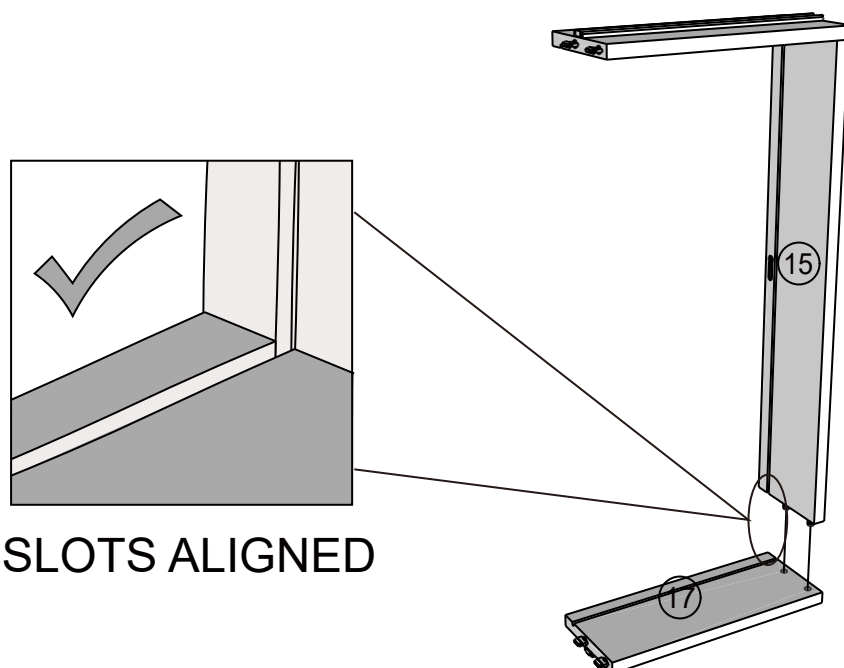
H38	N/A	4	
U136	Ø4 x 14mm	16	  not supplied

18



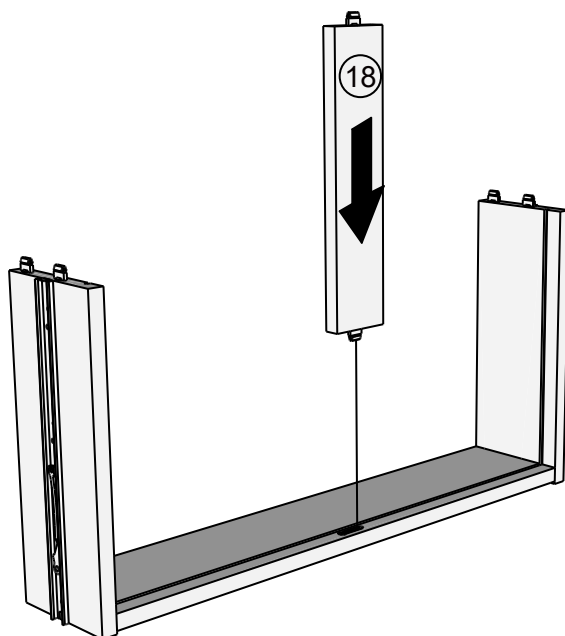
x4

19



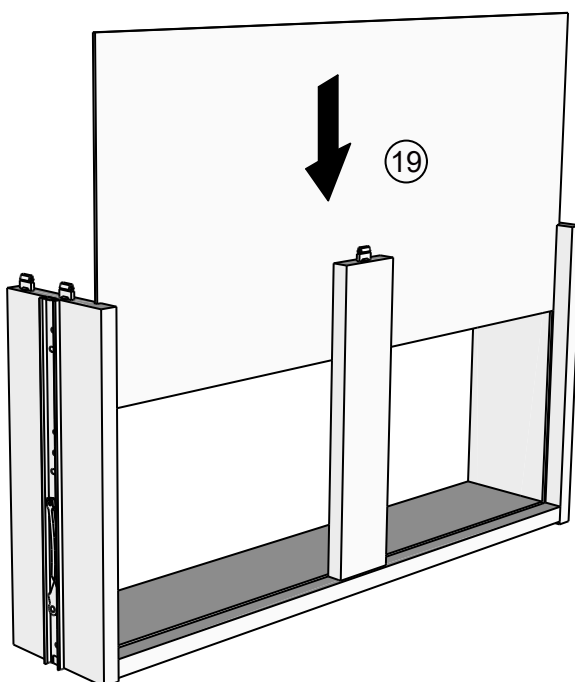
x4

20



x4

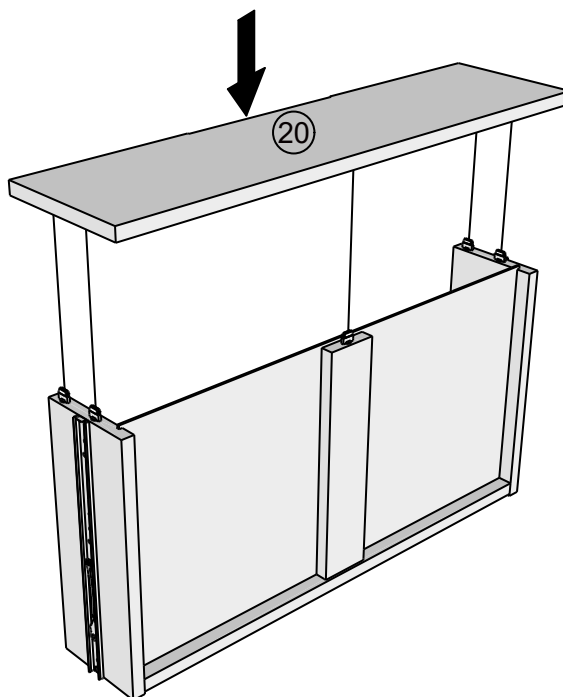
21



x4

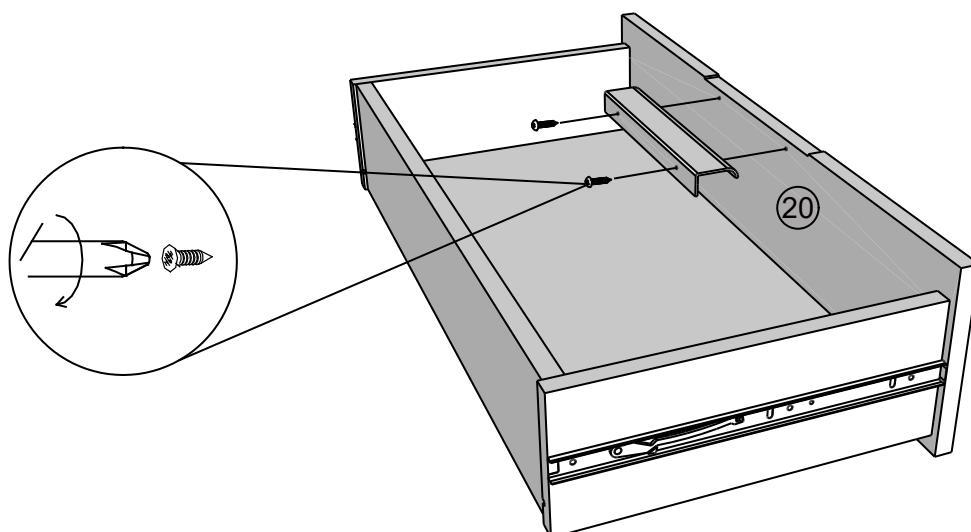
22

Note: Drawer will be permanently assembled once panel ②① is fitted.



x4

22



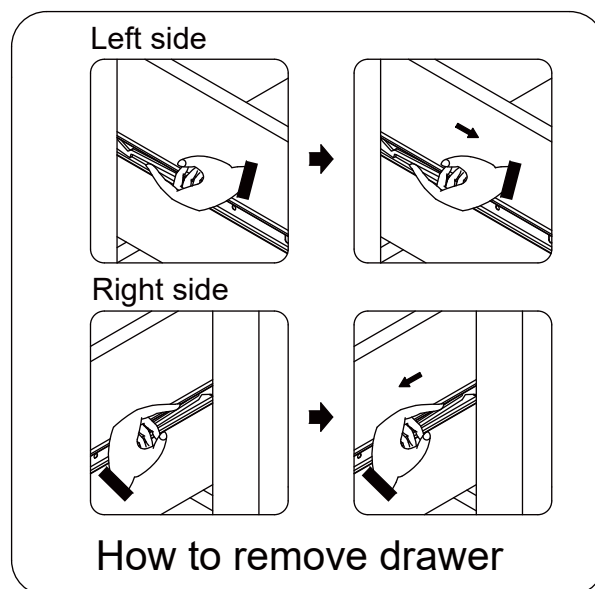
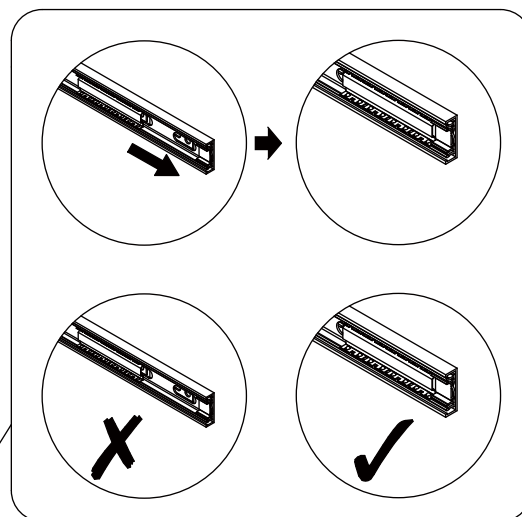
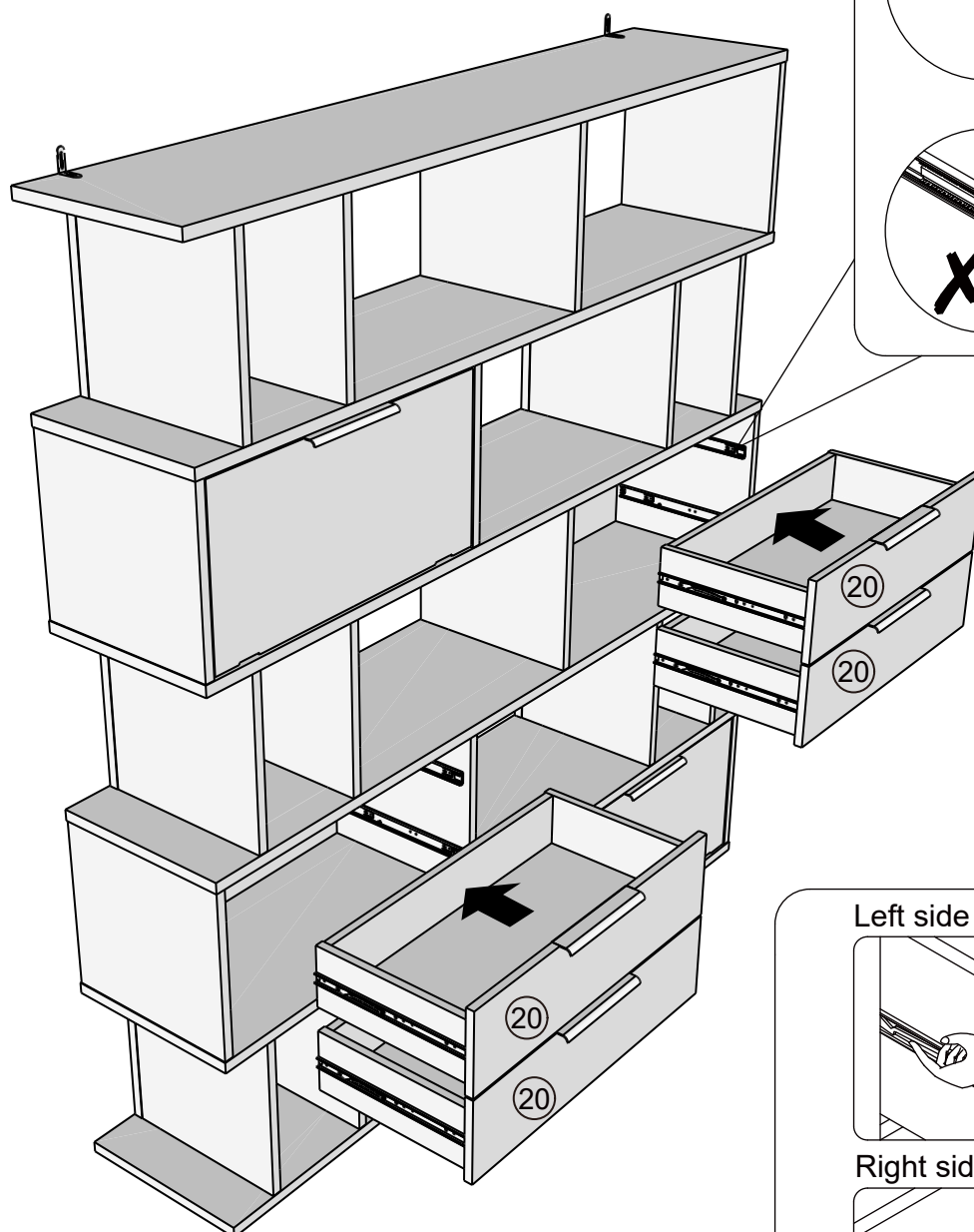
x4

E39

N/A

4





24

Actual product size

H177.5 x W160 x D35 cm

