

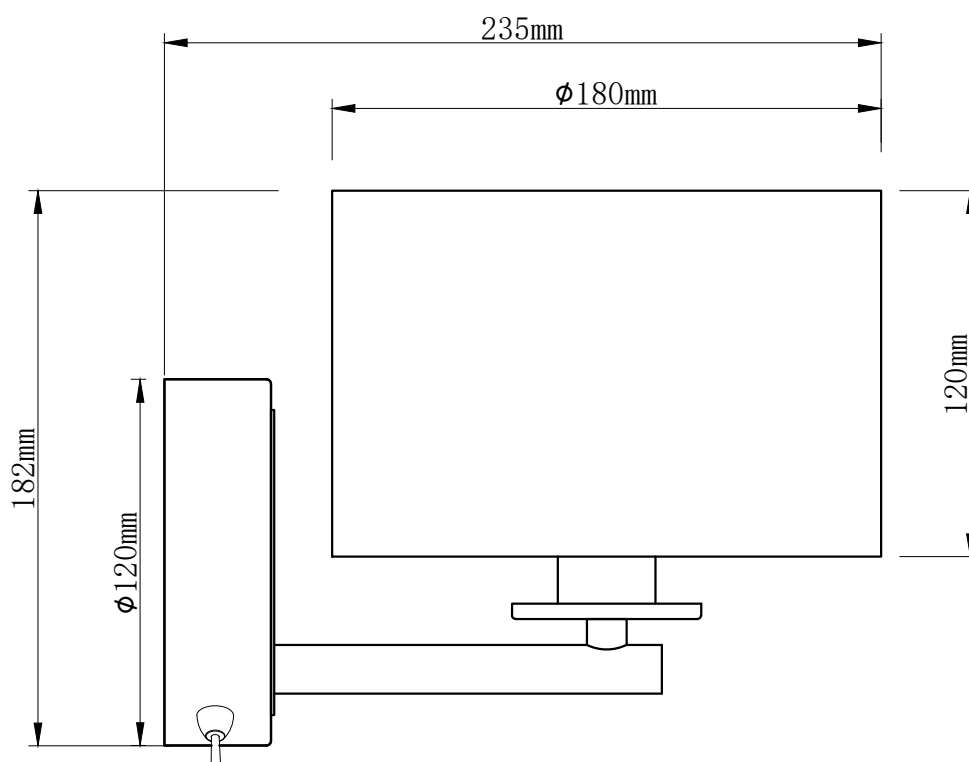
NEXT

u

NEXT

RECHARGEABLE HUDSON WALL LIGHT B95137 Assembly Instructions

Actual Product Size
L235*W180*H182mm



IMPORTANT - RETAIN FOR FUTURE REFERENCE

Need Help?

with: Assembly instructio

CALL:0333 777 8999

BEFORE YOU START

Warnings

† ti
 7
 " k ti @

 tifi ti 7 ti

 O
 u

Do's

We suggest you spend a short time reading through this leaflet before you start

When you are ready to start, make sure that you have the right tools and plenty of space

Unwrap all packaging materials and place the components on top of the carton box or on a clean floor to protect it from damage

We recommend that the packaging is used to protect the surfaces during assembly

Carefully check that you have all the parts before beginning assembly

Ensure the product is fully assembled as illustrated and all fixings fully tightened before use. Check fixings regularly to ensure they remain tight

Don'ts

The fitting should not be fixed to newly painted or plastered surfaces as this may cause discolouration of the finish

We recommend cleaning with a soft dry cloth, do not use abrasive materials as these will rub away the protective coating

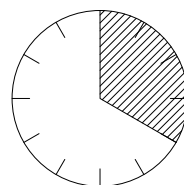
Contents and specification:

- 1 x battery lamp which doesn't need to be plugged in to function.
- This product contains 2 x batteries which are replaceable.
- Rechargeable by magnetic USB port: 2m USB charging cable included (USB plug is needed to charge but not included).
- 1 x E14 MAX 3W 4V LED lamp – bulb included.
- Average run time: 8 Hrs
- Average charge time from flat: 7 Hrs
- Wattage: 3W
- Light output: 80 lumen
- Colour Temperature: 3000 Kelvin
- This product has a charging indicator light. When charging, the light will show red. Once charging is complete, the light will change to white. In order to maintain the longevity of the product, please do not overcharge or leave on charge for 24 hours.

Number of people required to assemble

One person who is competent with electrical wiring and installation, however we do recommend that this item is installed by a qualified electrician

Time to assemble



20mins

Tools required

Cross Head Screwdriver

Missing parts

If you are missing any fixtures and fittings for your product please contact our customer service team on 0333 777 8999 and they will be happy to help.

Cleaning Care

We recommend cleaning with a soft dry cloth. Do not use abrasive materials as these will rub away the protective coating.

Maintenance

To ensure your safety, if the cable becomes damaged it must be replaced only by a qualified person.

Safety information

For your safety, please remember the following:

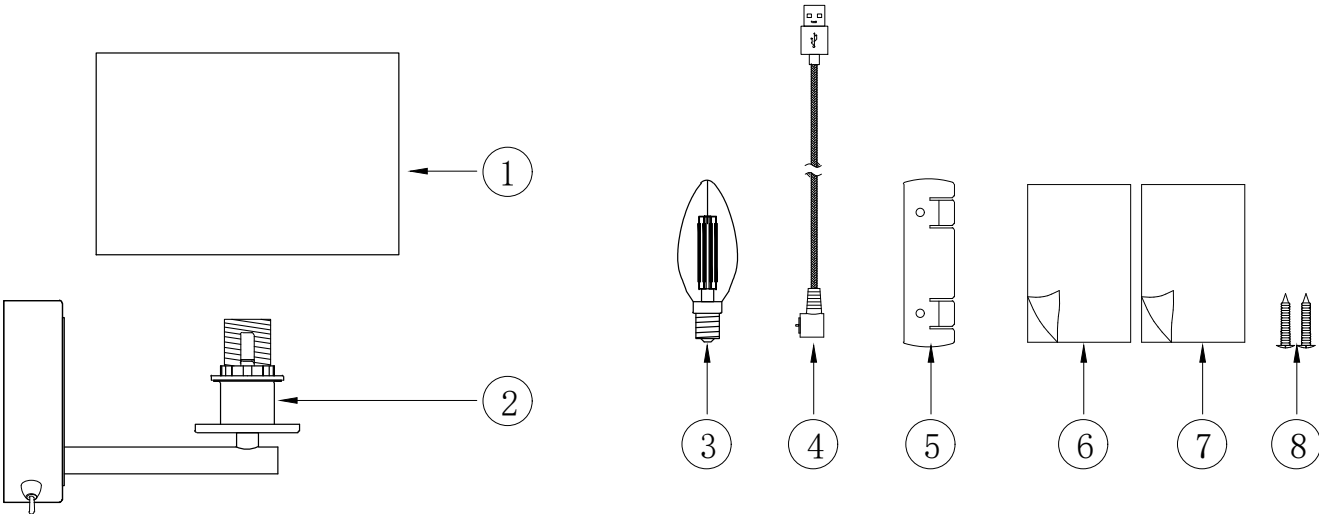
- Switch off before cleaning.
- Clean only with a soft dry cloth.

You can write to us at

Home Customer Services
 Next Retail Ltd,
 Desford Road,
 Leicester,
 LE19 4AT
 or
 Next Retail (Ireland) Ltd,
 13-18 City Quay,
 Dublin 2,
 D02 ED70

To view our full range please visit
www.next.co.uk

GETTING TO KNOW YOUR PRODUCT



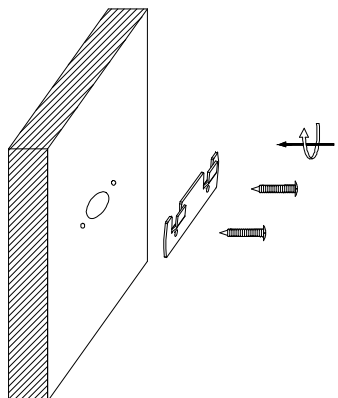
Ref	Description	Specification	Qty	Remark
1	Lamp shade	Φ180*H120MM	1	Packed in carton
2	Lamp base		1	Packed in carton
3	E14 bulb		1	Packed in carton
4	USB charging cable	2M	1	Packed in fixing pack
5	Bracket	L100*W30MM	1	Packed in fixing pack
6	Assembly instructions	A3 X 2	1	Packed in fixing pack
7	Re-package instructions	A4 X 1	1	Packed in fixing pack
8	Fixing screws	L38MM	2	Packed in fixing pack

NEXT

RECHARGEABLE HUDSON WALL LIGHT B95137

@

1

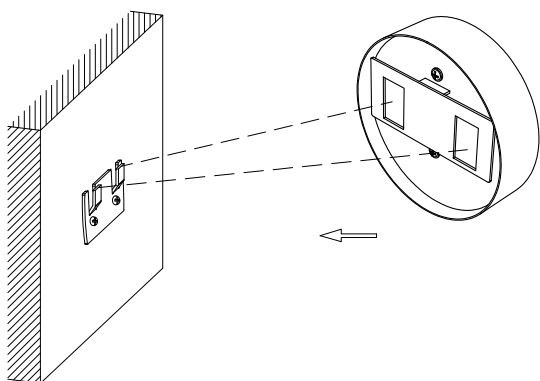


Step 1

y U

Attach fixing bracket to the wall using screws supplied.

2



Step 2

the wall light onto fixing bracket.

3

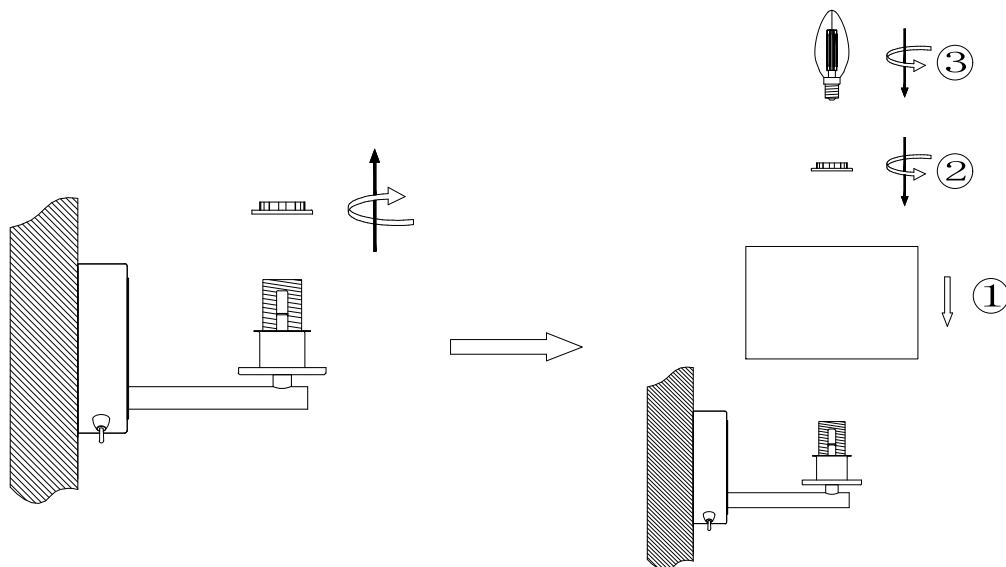
Step 3

Remove the shade ring from lampholder. Put the lamp shade onto lampholder and secure into position with the shade ring. Fit the bulb subject to below remark. Warning:

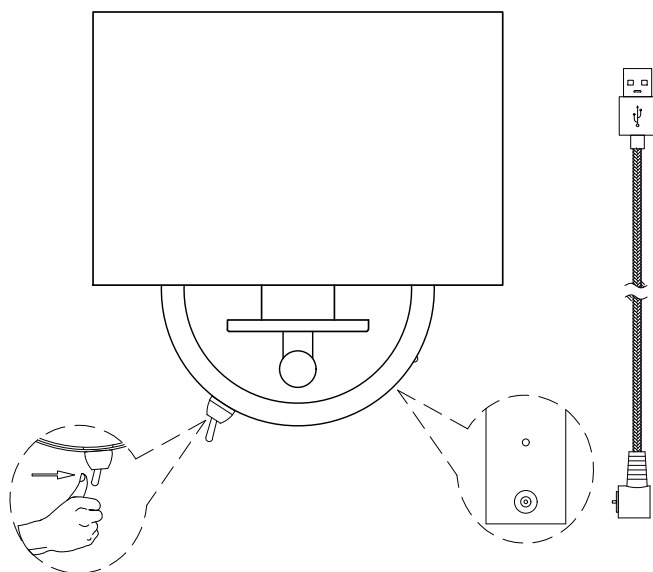
1 - Before the bulb is installed in the battery operated lamp holder, please ensure the product is turned off at the switch.

2 - This battery wall lamp can only use the supplied bulb. Please do not install any regular mains voltage bulb.

3 - This E14 bulb included is only suitable for use in this battery operated product. Please do not install in a regular mains voltage lamp holder.



4



Step 4

Connect the USB charging cable to the USB port. (2m USB charging cable included, USB plug is needed to charge but not included)

5

Step 5

Batteries can be replaced as per below diagrams. Remove the wall light from wall. Loosen the screws on the back of wall plate and remove the metal plate. Replace the batteries and put the metal plate back on then tighten the screws. Please note the old batteries should be disposed at the end of their life separately from you household waste. There are separate collection system for recycling. And the specification of the new batteries selected must be 18650 1500mAh 3.7Vdc.

