

TOWER®

over 100 YEARS of quality

T131001PL

TWV20

Cordless Window cleaner



SAFETY AND INSTRUCTION MANUAL
PLEASE READ CAREFULLY

*Subject to registering your Extended Guarantee online at www.towerhousewares.co.uk.



Towerbrand

GREAT BRITISH DESIGN, INNOVATION
AND EXCELLENCE SINCE 1912

Since the turn of the 20th century, Tower has been designing, developing and manufacturing housewares and small appliances used by millions of households throughout the UK and beyond. During the 1960s, the rise in popularity of pressure cooking saw Tower become the UK's largest producer of pressure cookers, right through into the late 1980s. In recent years the Tower brand has been reborn with an exciting and varied range of housewares and electrical appliances that have quickly reinstated the brand's richly deserved status as a household name.

TOWER

Visit

www.towerhousewares.co.uk

for more fantastic products.

Thank you for purchasing this appliance from the Tower range.

Please read this manual carefully **BEFORE** using the appliance for your own safety.

It has been designed to provide many years of trouble-free use.

There are many benefits to using a Tower Cordless Window cleaner:

- Powerful 2 Kpa suction
- 20W motor
- 150ml removable water tank
- 30 minute run timer from a single charge
- Long-life lithium battery
- Includes spray bottle, squeegee and wiper

Contents:

1. **Specifications**
Components and structure
2. **Technical Data**
3. **Important Safety Information**
4. **Before First Use**
5. **Using your Appliance**
6. **Troubleshooting**
7. **Recycling**
8. **Cleaning & Care**
9. **Wiring Safety**
10. **Warranty Information**

See back page for Customer Service Information.

Call us first, we can help.

With advice, spares and returns.

Visit our website: towerhousewares.co.uk Call: +44 (0)333 220 6066
(8.30am to 6.00pm Monday-Friday)

1 - Specifications:

This box contains:
Instruction Manual
Window Vacuum
Charger
Spray Bottle
Squeegee
Microfibre Cloth



Structure of your appliance:

- | | |
|------------------------------|-----------------------------|
| 1. Squeegee | 6. Bottle |
| 2. ON/OFF switch | 7. Cloth head attachment |
| 3. Water tank | 8. Cloth head securing ring |
| 4. Charger port | 9. Microfibre cloth |
| 5. Charging/ON/OFF indicator | |

2 - Technical Data:

Description:	TWV20 Cordless Window cleaner
Model:	T131001PL
Mains Charger:	DC 5V
Battery:	Rechargeable 3.7V 2200mAh
Charging Time:	3h
Running Time:	30min
Product Power:	20W

Should you encounter problems or require a replacement part, contact the Tower Customer Support Team: **+44 (0) 333 220 6066**.

Some spare parts may be ordered from the Tower website.
Your warranty becomes void should you decide to use non Tower spare parts.
Spare parts can be purchased from **www.towerhousewares.co.uk**

Guarantee for spare parts:

The spares and accessories are guaranteed for 1 year from date of purchase.
The main body and housing are guaranteed for the extended free warranty subject to registration.
If any defect arises due to faulty materials of workmanship, the faulty products must be returned to the place of purchase within 12 months from the date of purchase.
Refund or replacement is at the discretion of the retailer.

3 - Important Safety Information:

Please read these notes carefully BEFORE using your Tower appliance

- Check that the voltage of the main circuit corresponds with the rating of the appliance before operating.
- If the supply cord or appliance is damaged, stop using the appliance immediately and seek advice from the manufacturer, its service agent or a similarly qualified person.
- DO NOT let the cord hang over the edge of a table or counter or let it come into contact with any hot surfaces.
- DO NOT carry the appliance by the power cord.
- The use of accessory attachments is not recommended by the appliance manufacturer apart from those supplied with this product. DO NOT use extension cords with the appliance.
- DO NOT pull the plug out by the cord as this may damage the plug and/or the cable.
- Switch off at the wall socket then remove the plug from the socket when not in use or before cleaning.
- Switch off and unplug before fitting or removing tools/ attachments, after use and before cleaning.
- Close supervision is necessary when any appliance is used by or near children.
- Children should not play with the appliance.
- This appliance can be used by children aged from 8 years and above and persons with reduced physical, sensory or mental capabilities or lack of experience and knowledge if they have been given supervision or instruction concerning use of the appliance in a safe way and understand the hazards involved.
- Cleaning and user maintenance should not be undertaken by children without supervision.

- Take care when any appliance is used near pets.
- DO NOT use this product for anything other than its intended use.
- DO NOT immerse cords, plugs or any part of the appliance in water or any other liquid.
- This appliance is for household use only.
- DO NOT use the appliance outdoors.
- Keep hair, loose clothing, fingers and all body parts away from moving parts.
- DO NOT use to pick up flammable liquids, such as gasoline or use in an area where they might be present.
- DO NOT pick up anything that is burning or smoking such as cigarettes, matches or hot ashes.
- Use extra care when cleaning on stairs.
- Use only manufacturer's recommended accessories.
- DO NOT pull cord, use cord as a handle, close a door on cord, or pull cord around sharp edges or corners.
- In the unlikely event the appliance develops a fault, stop using it immediately and seek advice from the Customer Support Team.

4 - Before First Use

Read all instructions and safety information carefully before first use. Please retain this information for future reference.

1. Remove the product from the box.
2. Remove any packaging from the product.
3. Please retain all packaging until you have checked and counted all the parts and the contents against the parts list.
4. Dispose of the packaging in a responsible manner.

5 - Using Your Appliance

Assembling the Unit:

1. To use the unit, begin by assembling it.
2. To assemble the window vacuum, clip the squeegee onto the main body of the unit. To do this, align the 2 tabs at the back of the squeegee with the 2 corresponding slots on the main body of the unit.
3. Once the parts are lined up, push down on the grooved tab at the underside of the squeegee and push the attachment onto the main body of the unit until both tabs click into place.
4. The window vacuum is now ready for normal use.

Charging the Unit:

1. This unit can be charged from the mains, using the included mains adaptor.
2. To charge the unit, insert the mains adaptor into its corresponding jack at the back of the unit and plug it into an active mains socket, ensuring the socket switch is turned to the ON position. The LED indicator above the charging port will flash blue to indicate the unit is charging.

Note: The normal charging time for this unit is of approximately 3 hours.

3. The unit will be fully charged when the LED indicator changes from flashing blue to solid blue. This indicates the window vacuum is ready for normal use.
4. When the unit's battery is running low, the LED indicator will begin to flash blue. This indicates the battery has reached 5% capacity. When the battery is fully flat, the indicator will flash quicker and the motor will stop running. When this occurs, charge up the unit as detailed above.

Note: A rapidly flashing blue indicator and stopped motor when the unit is fully charged may also indicate the unit's automatic safety cut-off system has activated. Should this occur, check that the vents are not being blocked and that the water reservoir is firmly secured to the unit before attempting to use the unit again.

Using the Window Vacuum:

1. Once the window vacuum has been assembled, press the On/Off button to turn it on. The motor will start up and the LED indicator light on the lower part of the unit will light up blue to indicate the unit has been turned on.
2. Press the On/Off button again while the unit is in operation to turn it off. The motor will stop working and the LED indicator light on the lower part of the unit will go out to indicate the unit has been turned off.

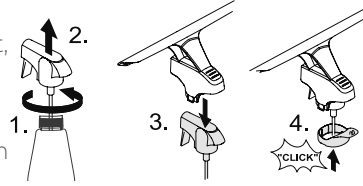
3. To use the vacuum cleaner, turn it on and run it over the area to be cleaned in a straight line, from top to bottom or from side to side. The vacuum will automatically absorb any water or moisture contained within that area and store it in the water tank. Repeat this process as many times as necessary until the relevant area has been fully cleaned.

Using the Spray Bottle:

1. This unit comes complete with a spray bottle, which can be filled with water or a soft, non-abrasive detergent to clean windows or glass surfaces.
2. To fill this bottle, unscrew the spray nozzle and put it to one side. Fill the bottle with water, replace the spray nozzle and turn it clockwise to tighten it and secure it into place.
3. To use the spray bottle, press the trigger on the nozzle. Water will spray out onto the surface to be cleaned.
4. Alternatively use the spray bottle with the Cloth Head attachment:

Using the Cloth Head Attachment:

1. This unit comes complete with a cloth head attachment and microfibre cloth attachment, for use with the included spray bottle.
2. Remove the spray nozzle from the spray bottle.
3. Push the Cloth Head attachment firmly down over the spray nozzle.
4. Secure in place with the Cloth Head Securing Ring, pushing until it clicks in to place.
5. Fill the spray bottle with the required liquid.
6. Tighten the nozzle and attachment into the spray bottle neck.
7. Once the cloth head attachment is correctly installed, fit the microfibre cloth over the top of it using the included straps and Velcro pad.
8. Press the nozzle trigger to spray the liquid and use the Cloth Head attachment to clean the surface.



Note: Ensure the spray bottle has been filled with water before attempting to use the cloth head attachment.

9. To use the cloth head attachment, begin by spraying water onto the surface to be cleaned, as described in the 'Using the Spray Bottle' section above. Once the surface is wet, run the cloth head attachment over the areas to be cleaned, as required. Once the surface has been cleaned, use the main unit to dry out the affected areas if necessary.

6 - Troubleshooting

Problem	Possible Solution
The unit is not working.	<p>Ensure the unit is fully charged. If necessary, connect the included mains adaptor into the unit and plug it into an active mains socket.</p> <p>Ensure the unit is not clogged and that the water tank is correctly placed within the main body of the appliance.</p> <p>The automatic cut-off system may have activated. Wait for the appliance to cool down, then attempt to use it again.</p>
The unit is streaking surfaces when cleaning.	<p>Pull the upper silicone wiping lip out of the squeegee, rinse it, and re-insert it into the unit in the reverse position. Ensure the lip is fully inserted into the slot when replacing it onto the squeegee, otherwise the process will have to be started again from the beginning.</p> <p>Use less cleaning solution when spraying the surfaces to be cleaned.</p>
Water is leaking from the air louvers.	The water tank is full. Drain the water tank as instructed in the Cleaning and Care section of this manual.

7 - Recycling

DISPOSAL OF THE UNIT

Appliances bearing the symbol shown here may not be disposed of in domestic rubbish. You are required to dispose of old electrical and electronic appliances like this separately.

Please visit www.recycle-more.co.uk or www.recyclenow.co.uk for access to information about the recycling of electrical items.

Please visit www.weeeireland.ie for access to information about the recycling of electrical items purchased in Ireland.

The WEEE directive, introduced in August 2006, states that all electrical items must be recycled, rather than taken to landfill.

Please arrange to take this appliance to your local Civic Amenity site for recycling, once it has reached the end of its life.



8 - Cleaning & Care

Cleaning the Unit Body:

1. Before cleaning the unit body, ensure the unit is disconnected from the mains supply and not in operation.
2. Use a damp cloth to clean the unit body. Never use any abrasive cleaning materials or solvents, as these could cause damage to the surface of the unit.

WARNING! DO NOT allow any liquids into any part of the unit other than the water tank, as this could cause damage to the electrical components and cause it to malfunction.

Draining the Water Tank:

1. Any water or moisture picked up by the unit while in normal operation is stored in the removable water tank. When this tank is full, it will need to be drained.
2. To drain the water tank, open the tab at the front of it and insert a hose or tube (not included) into the drain plug opening. Drain out the water in the tank, then clean it, as described below.

Cleaning the Water Tank:

1. To clean the water tank, begin by removing it from the main body of the unit. To do this, press down on the grooved tab at the top of the water tank and pull it firmly towards you and away from the main body of the unit until it detaches.
2. Once the water tank has been detached from the unit, separate the top half from the bottom half to open it.
3. When the water tank is open, carefully pull the tube separator out until it detaches from the bottom half of the tank.
4. Rinse the separator and the two halves of the water tank under running water to clean them. Allow the parts to dry thoroughly before reassembling the water tank.

WARNING! The water tank is NOT dishwasher safe. DO NOT attempt to clean the water tank in the dishwasher.

5. Once the tank has been cleaned, re-assemble it by connecting the tube separator to the bottom half of the tank, then attaching the top half of the tube to the lower half so that the two are secured together.
6. When the water tank has been reassembled, press down on the grooved tab at the top of the tank and align it with its corresponding notch on the main body of the unit. Once the two parts are aligned, push the water tank back into the appliance until it slots into place. When the water tank is in place, release the grooved tab; it will automatically slot into place as well and secure the water tank to the main unit.

Storing the Appliance:

1. Ensure the appliance is fully dry and the water tank has been drained before storing.
2. Once the appliance is dry and the water tank has been drained, store it in a cool dry place out of the reach of children, preferably in its original packaging.

9 - Wiring Safety for UK Use Only

(Power adapters only)

Never open the power adapter, you risk getting an electric shock. Only use the power adapter that is supplied with your product.

You must always connect the power adapter to the product before connecting to the mains power supply.

The power adapter must be used indoors only, and must not be subjected to damp conditions.

The power adapter does not have any user serviceable parts.

If in doubt, consult a qualified electrician who will be pleased to do this for you.

If you need to remove the plug – disconnect it from the mains – and then cut it off of the mains lead and immediately dispose of it in a safe manner. Never attempt to reuse the plug or insert it into a socket outlet as there is a danger of an electric shock.

WARNING:

Do not attempt to open any part of the power adaptor or plug.

10 - Warranty



As a thank you for purchasing one of our fantastic products, we are offering you an extra 2 years peace of mind in addition to your 1 year guarantee.

To receive your extra 2 year guarantee, register your appliance online within 28 days of purchase by visiting www.towerhousewares.co.uk



This product is guaranteed for 12 months from the date of original purchase. If any defect arises due to faulty materials of workmanship, the faulty products must be returned to the place of purchase. Refund or replacement is at the discretion of the retailer.

The Following Conditions Apply:

- The product must be returned to the retailer with proof of purchase or a receipt.
- The product must be installed and used in accordance with the instructions contained in this instruction guide.
- It must be used only for domestic purposes.
- It does not cover wear and tear, damage, misuse or consumable parts.
- Tower has limited liability for incidental or consequential loss or damage.

This guarantee is valid in the UK and Eire only.

The standard one year guarantee is only extended to the maximum available for each particular product upon registration of the product within 28 days of purchase. If you do not register the product with us within the 28 day period, your product is guaranteed for 1 year only.

To validate your extended warranty, please visit www.towerhousewares.co.uk and register with us online.

Please note that length of extended warranty offered is dependent on product type and that each qualifying product needs to be registered individually in order to extend its warranty past the standard 1 year. Extended warranty is only valid with proof of purchase or receipt.

Notes:

Notes:

TOWER®

over 100 YEARS of quality

thank you!

We hope you enjoy your appliance for many years. As a thank you for purchasing one of our fantastic products, we are offering you an extra 2 years peace of mind.

*To receive your extra 2 years guarantee, register your appliance online within 28 days of purchase by visiting:

www.towerhousewares.co.uk

Should you have a problem with your appliance, or need any spare parts, please call our Customer Support Team on:

+44 (0) 333 220 6066

Your warranty becomes void should you decide to use non Tower spare parts. Spare parts can be purchased from **www.towerhousewares.co.uk**

