

# SOMERSET

## SWAYING SOLAR GARDEN LIGHT

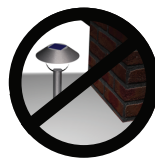
# USER GUIDE



Ensure your solar panel is South-facing or as near as possible



Clean your solar panel from time to time



Do NOT place your solar panel in shaded areas.



Do NOT charge behind glass

**Thank you for choosing the Somerset Swaying Solar Garden Light. Please read these instructions carefully before using your light.**

### Important notes

Always take care when installing your light. If you are at all unsure, please contact your retailer or a professional trades person for advice. Always take care when setting up your light if the ground is very hard - sometimes watering the ground to soften it can make it easier to install the stake. For best results, please position your light in an unobstructed south-facing position.

### Installation Information

Remove all packaging and put to one side. Please carefully consider where you wish to install your light before making alterations to your property. It's particularly important that the solar panel receives as much sunlight as possible. Ensure that it is not obstructed by buildings, fences, trees, sheds, etc. or the shadows that these create. **If the solar panel is installed in a poor location, it may not perform to the best of its ability.**

To maximise the battery capacity, the light should be charged in direct sunlight for at least 12 hours prior to first use in direct sunlight. Failure to do so can shorten the battery life or performance of the light.

The light will turn ON/OFF automatically when left in the on position. Please note it is completely normal for the light to come on at different times dependent on location/shading/time of year. Please note: the light may switch on during the day if it positioned in shade.

### Product Specifications

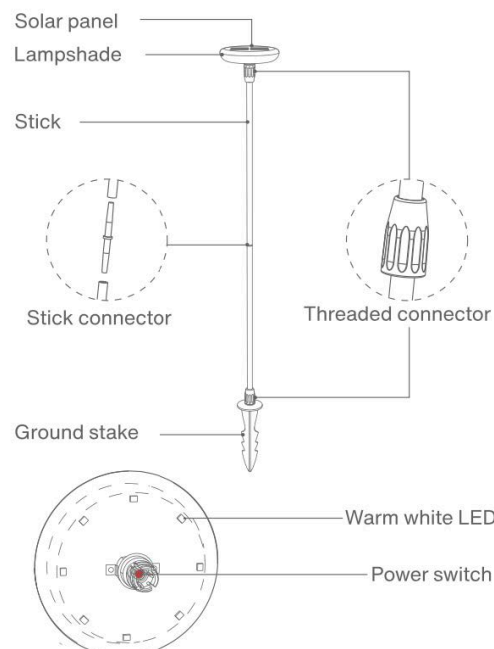
Lumens: 32l  
Battery: 1000mAh AAA (built-in)  
Charging time: 6-8 hours  
Working time: 10-12 runtime

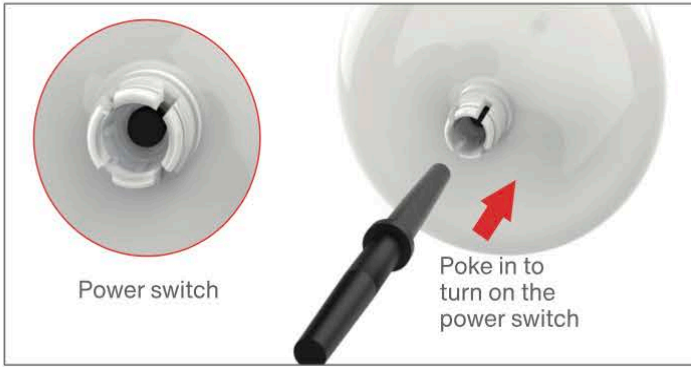
### How to use

You will locate the ON/OFF switch inside the lampshade - it can be accessed via the mounting hole.

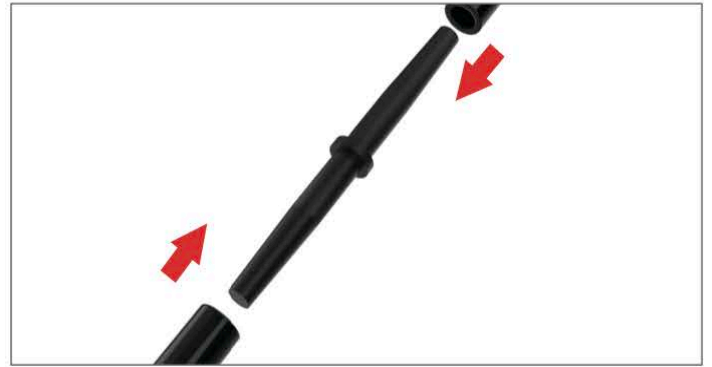
Switch the position to 'ON' and it will automatically turn on at dusk, and off again at dawn, or when the battery energy is depleted.

You do not have to turn the light on and off manually every time you would like to use it.





1. Use the stick connector to turn on the power switch, through the mounting hole at the bottom of the lampshade.



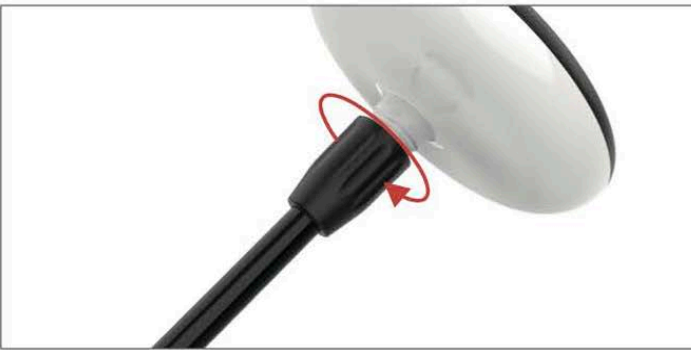
2. Connect the two sticks provided using the connector plug.



3. Insert the two threaded connectors onto the stick, approximately 5-6cm away from the ends.



4. Insert the stick into the lampshade, making sure it sits snugly.



5. Rotate the threaded connector to secure the lampshade to the stick.



6. Insert the other end of the stick into the ground stake.



7. Rotate to attach the threaded connector to the shade to the point where the stick cannot be pulled out



8. To avoid damaging the product, please loosen or moisten the soil before installing the lamps in places with direct sunlight and no shadows.

## Troubleshooting

If you are encountering any problems with your light, often you can resolve this yourself by following our troubleshooting guide. If the light has its solar panel in a poor location it will struggle to work, but that doesn't mean there is a fault with the unit. Please remember that the light will arrive with some charge and will likely work for a few days even if the solar panel is poorly located. Please try the troubleshooting tips below before contacting your retailer:

Please ensure that there are no nearby light sources shining on the solar panel after dark. These could be bright indoor/outdoor lights from your property or neighbours', or street lights. If you are unsure, take the light inside and test it in a dark room indoors.

## Recharge Procedure

1. Double-check the location of your solar panel to ensure it is in a clear location and as South-facing as possible.
2. Turn the light off at the switch and leave it to recharge for 3-5 days ensuring at least one sunny day has passed.
3. After 3-5 days return to the light and turn it back on at the switch.
4. If your light still does not illuminate after dark, please contact your retailer.

Please do not store away for extended periods of time as this can affect battery life due to limited UV light interaction.

## Maintenance

Clean the surface of the solar panel and light lens with a soft, slightly moistened cloth. Do not use corrosive cleansing agents or chemical solutions as these may damage surfaces and impair operation. Keep the solar panel free of dirt, debris and snow.

## Safety Instructions

The Solar Centre assumes no liability for any damage resulting from the use of this product, nor do we assume liability for any damage to property or personal injury caused by improper use or failure to observe these instructions.

Unauthorised conversion and/or modification of the unit may be dangerous and will invalidate your warranty. To avoid damage to sight, do not look directly at the light source. This device is not a toy and should be kept out of reach of children. Do not submerge the device in water or expose it to extreme temperatures (less than -25°C or higher than 50°C).

**SOMERSET SWAYING SOLAR GARDEN  
LIGHT**

**MODEL NUMBER: SC2371**

**SOLARCENTRE®  
44-46 COLDHARBOUR LANE HARPENDEN  
HERTFORDSHIRE  
AL5 4UN**

**WWW.SOLARCENTRE.CO.UK**

