

SCENTED DIFFUSER

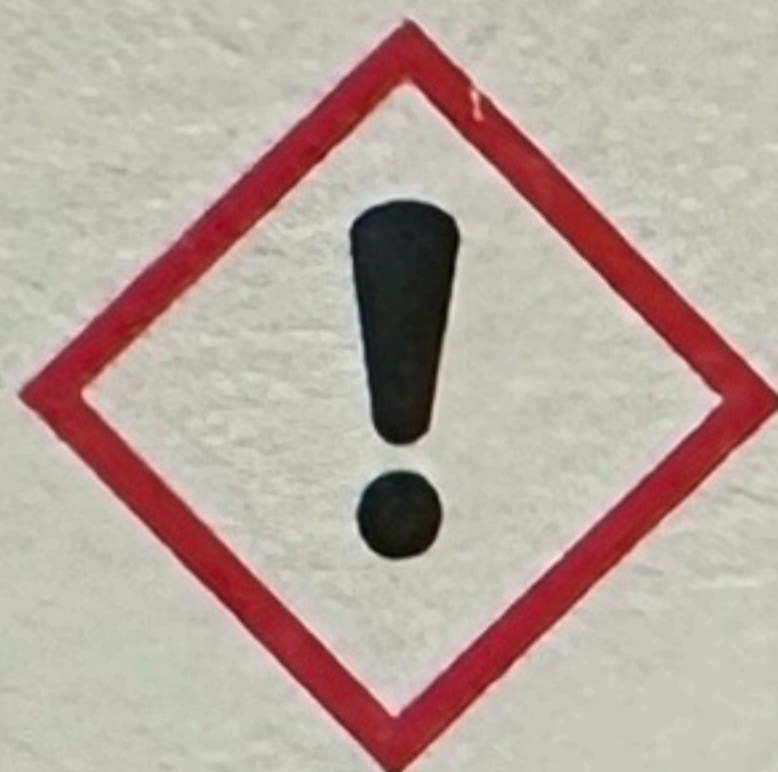
A simple, effective and safe way to continuously fill your home with a delightful aroma.

Instructions for use:

Remove the bottle from the packaging and remove the bottle stopper, place the decor cap cover on the product if provided. Insert the reed sticks into the diffuser, then remove and rotate the reed sticks to allow the infused side to fill your home with aroma. For a more intense fragrance, remove the reed sticks from the liquid over a protected surface and rotate, reinserting into the bottle once a week.

Precautions for use:

Keep away from pets and children. To prolong the fragrance time, keep away from heat and avoid direct sunlight. Do not attempt to use a knife or sharp object to remove the bottle stopper. Do not allow the diffuser to come into contact with furniture, fabrics, finished wood or enamel surfaces. In case of contact rise thoroughly with soap and water. Do not use if containers are cracked. Clean up immediately if any leakage occurs. Due to natural organic materials in the diffusers, discolouration can be seen, which is a normal phenomenon and does not affect the use. Do not allow the diffuser to come into contact with skin or eyes. In case of contact rinse with water immediately. This product is not edible. If accidentally swallowed, seek medical advice immediately.



Warning:

Ruby Cherry & Merlot

Contains Linalool; tr-delta-1-(2,6,6-Trimethyl-3-cyclohexen-1-yl)-2-buten-1-one (E-delta-Damascone). May cause an allergic skin reaction.

May cause an allergic skin reaction.

Harmful to aquatic life with long lasting effects.

If medical advice is needed, have product container or label at hand.

Keep out of reach of children.

Wear protective gloves.

IF ON SKIN: Wash with plenty of water

Take off contaminated clothing and wash it before reuse.

Dispose of contents/container in accordance with local regulations.

Contains reaction mass of 1-(1,2,3,4,5,6,7,8- octahydro-2,3, 8,8-tetramethyl-2-naphthyl)

ethan-1-one and 1-(1,2, 3,4,6,7,8,8a-octahydro-2,3,8,8-tetramethyl-2-naph thyl)ethan-1-one and

1-(1,2,3,5,6,7,8,8a-octahydro -2,3,8,8-tetramethyl-2-naphthyl)

ethan-1-one; p-Anisyl acetate; Methyl cinnamate; Piperonal; Reaction mass of 3,5-dimethyl-

cyclohex-3-ene- 1- carbaldehyde and 2,4-dimethylcyclohex-3-

ene-1- carbaldehyde. May produce an allergic reaction.

UFI: 2500-C029-G00N-DWDY

For Any Queries, please contact our Customer Care Team:

Manufacturer: Dalian Talent Europe Ltd.

New Carvel Building, Warstock Road, Kings Heath, Birmingham, B14 4RT, UK

E-mail: support@daliatalent.com

Authorised representative: Dalian Talent Poland Sp.zo.o

Street Swietego, Jana 19, 33-240 Zabno, Poland

E-mail: support_dtp@daliatalent.com

Phone number: +48 1464 654 936

Made in China



Warning:

Apricot & Peach

Contain Linalool .May cause an allergic skin reaction.

May cause an allergic skin reaction.

If medical advice is needed, have product container or label at hand.

Keep out of reach of children.

Wear protective gloves.

IF ON SKIN: Wash with plenty of water

Take off contaminated clothing and wash it before reuse.

Dispose of contents/container in accordance with local regulations.

Contains 2,6-Octadien-1-ol, 3,7-Dimethyl-, (E)- ;

2,6-Octadien-1-ol, 3,7-Dimethyl-, (Z)-

; 2-Buten-1-one, 1-[(1r,2s)-2,6,6-Trimethyl-3-

Cyclohexen-1-yl]-, (2e)-Rel .May produce an allergic

reaction.

UFI:J800-U0RP-T006-12GX

Praline & Cream

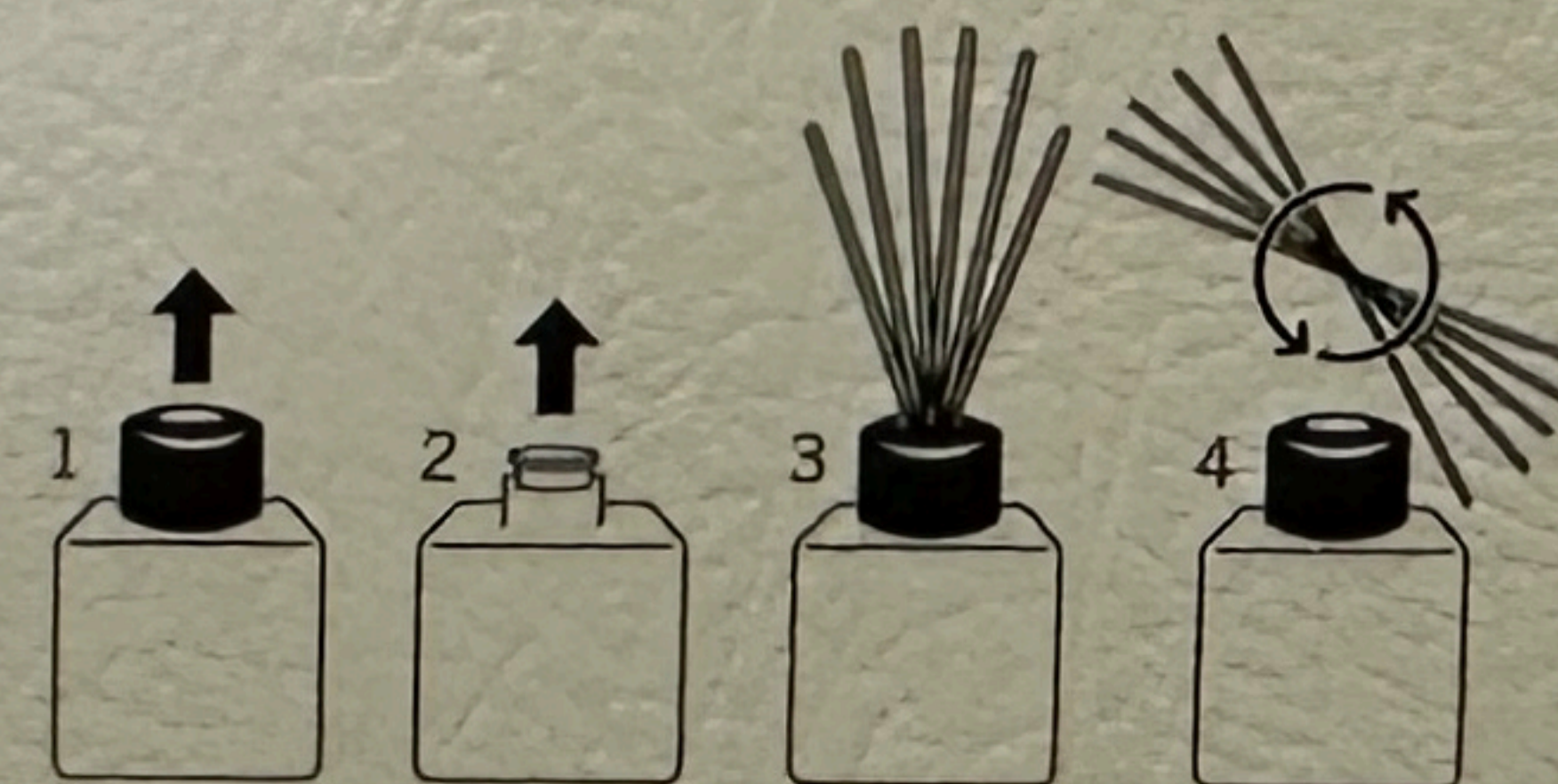
EUH208 :Contains 2-ethoxy-4-methylphe-

enol; 4-hydroxy-2,5-dimethyl-3(2H)-fura-

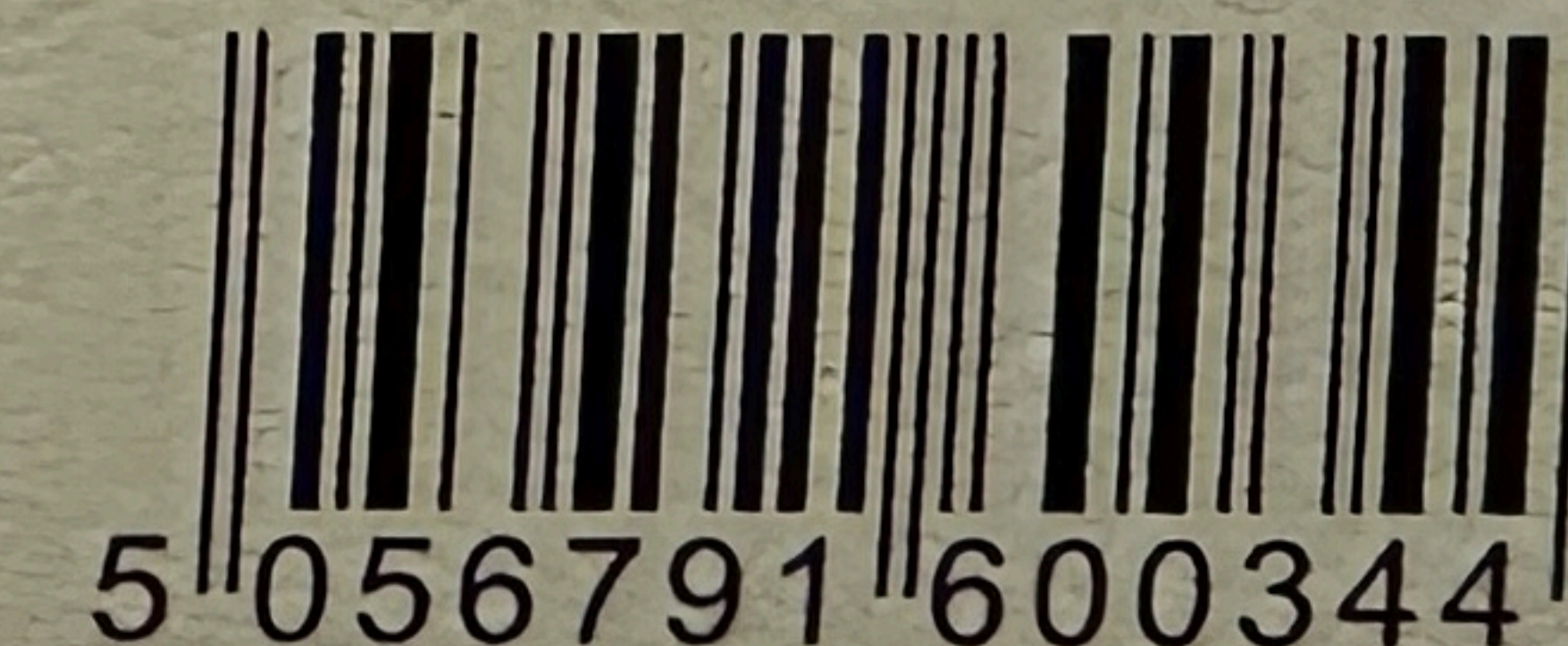
none (=furanol); 4-methoxybenzyl

alcohol (= anisyl alcohol).May produce an

allergic reaction.



50ml x 3



Batch No. : 2024.06