

SECTION 1: Identification of the substance/mixture and of the company/undertaking

1.1. Product identifier

Product form	: Mixture
Product name	: Joules Multi-Surface Matt Emulsion - Various Colours
Product code	: PME/XX/0XXX/XX
Product group	: Blend

1.2. Relevant identified uses of the substance or mixture and uses advised against

1.2.1. Relevant identified uses

Intended for general public	
Main use category	: Professional use, Consumer use
Use of the substance/mixture	: Paints and coatings (including tinters for deco mixing systems) for decorative architectural use e.g. of interior and exterior surfaces of buildings and fixtures. Includes varnishes and wood stains

1.2.2. Uses advised against

No additional information available

1.3. Details of the supplier of the safety data sheet

Graham & Brown Ltd.
Stanley Street
BB1 3BW Blackburn, Lancashire
UK
T +44 (0) 808 168 3795
www.grahambrown.com

1.4. Emergency telephone number

Emergency number	: +1 800 554 0887 In case of an emergency telephone 111 or contact a doctor
------------------	--

SECTION 2: Hazards identification

2.1. Classification of the substance or mixture

Classification according to Regulation (EC) No. 1272/2008 [CLP]

Not classified

Adverse physicochemical, human health and environmental effects

No additional information available

2.2. Label elements

Labelling according to Regulation (EC) No. 1272/2008 [CLP]

Precautionary statements (CLP)	: P102 - Keep out of reach of children. P233 - Keep container tightly closed. P264 - Always wash hands after handling the product. P273 - Avoid release to the environment. P301+P330+P331 - IF SWALLOWED: Rinse mouth. Do NOT induce vomiting. P302+P352 - IF ON SKIN: Wash with plenty of water. P305+P351+P338 - IF IN EYES: Rinse cautiously with water for several minutes. Remove contact lenses, if present and easy to do. Continue rinsing. P314 - Get medical advice/attention if you feel unwell. P501 - Dispose of contents/container to hazardous or special waste collection point, in accordance with local, regional, national and/or international regulation.
--------------------------------	---

Joules Multi-Surface Matt Emulsion - Various Colours

Safety Data Sheet

according to Regulation (EC) No. 1907/2006 (REACH) with its amendment Regulation (EU) 2015/830

EUH-statements : EUH208 - Contains 1,2-benzisothiazol-3(2H)-one; 1,2-benzisothiazolin-3-one(2634-33-5), reaction mass of 5-chloro-2-methyl-2H-isothiazol-3-one and 2-methyl-2H-isothiazol-3-one (3:1)(55965-84-9), Methylisothiazolinone(2682-20-4). May produce an allergic reaction.
EUH211 - Warning! Hazardous respirable droplets may be formed when sprayed. Do not breathe spray or mist.

2.3. Other hazards

Contains no PBT and/or vPvB substances $\geq 0.1\%$ assessed in accordance with REACH Annex XIII

SECTION 3: Composition/information on ingredients

3.1. Substances

Not applicable

3.2. Mixtures

Name	Product identifier	%	Classification according to Regulation (EC) No. 1272/2008 [CLP]
1,2-benzisothiazol-3(2H)-one; 1,2-benzisothiazolin-3-one	CAS-No.: 2634-33-5 EC-No.: 220-120-9 EC Index-No.: 613-088-00-6	< 0.036	Acute Tox. 4 (Oral), H302 Skin Irrit. 2, H315 Eye Dam. 1, H318 Skin Sens. 1, H317 Aquatic Acute 1, H400
reaction mass of 5-chloro-2-methyl-2H-isothiazol-3-one and 2-methyl-2H-isothiazol-3-one (3:1)	CAS-No.: 55965-84-9 EC Index-No.: 613-167-00-5	≤ 0.00149	Acute Tox. 2 (Inhalation), H330 Acute Tox. 2 (Dermal), H310 Acute Tox. 3 (Oral), H301 Skin Corr. 1C, H314 Eye Dam. 1, H318 Skin Sens. 1A, H317 Aquatic Acute 1, H400 (M=100) Aquatic Chronic 1, H410 (M=100)
Methylisothiazolinone	CAS-No.: 2682-20-4 EC-No.: 220-239-6 EC Index-No.: 613-326-00-9	≤ 0.00149	Acute Tox. 3 (Oral), H301 Acute Tox. 3 (Dermal), H311 Acute Tox. 2 (Inhalation), H330 Skin Corr. 1B, H314 Eye Dam. 1, H318 Skin Sens. 1A, H317 Aquatic Acute 1, H400 Aquatic Chronic 1, H410

Specific concentration limits:

Name	Product identifier	Specific concentration limits (%)
1,2-benzisothiazol-3(2H)-one; 1,2-benzisothiazolin-3-one	CAS-No.: 2634-33-5 EC-No.: 220-120-9 EC Index-No.: 613-088-00-6	(0.05 \leq C \leq 100) Skin Sens. 1; H317
reaction mass of 5-chloro-2-methyl-2H-isothiazol-3-one and 2-methyl-2H-isothiazol-3-one (3:1)	CAS-No.: 55965-84-9 EC Index-No.: 613-167-00-5	(0.0015 \leq C \leq 100) Skin Sens. 1A; H317 (0.06 \leq C < 0.6) Skin Irrit. 2; H315 (0.06 \leq C < 0.6) Eye Irrit. 2; H319 (0.6 \leq C \leq 100) Skin Corr. 1C; H314 (0.6 \leq C \leq 100) Eye Dam. 1; H318
Methylisothiazolinone	CAS-No.: 2682-20-4 EC-No.: 220-239-6 EC Index-No.: 613-326-00-9	(0.0015 \leq C \leq 100) Skin Sens. 1A; H317

Full text of H- and EUH-statements: see section 16

Joules Multi-Surface Matt Emulsion - Various Colours

Safety Data Sheet

according to Regulation (EC) No. 1907/2006 (REACH) with its amendment Regulation (EU) 2015/830

SECTION 4: First aid measures

4.1. Description of first aid measures

First-aid measures general	: Get medical advice/attention if you feel unwell.
First-aid measures after inhalation	: Remove person to fresh air and keep comfortable for breathing.
First-aid measures after skin contact	: Gently wash with plenty of soap and water.
First-aid measures after eye contact	: If eye irritation persists: Get medical advice/attention. In case of contact with eyes, rinse immediately with plenty of water and seek medical advice. Remove contact lenses, if present and easy to do. Continue rinsing.
First-aid measures after ingestion	: Call a poison center or a doctor if you feel unwell. Rinse mouth out with water.

4.2. Most important symptoms and effects, both acute and delayed

Symptoms/effects after skin contact	: May cause an allergic skin reaction.
Symptoms/effects after eye contact	: May cause slight irritation.
Symptoms/effects after ingestion	: May cause a light irritation of the linings of the mouth, throat, and gastrointestinal tract.

4.3. Indication of any immediate medical attention and special treatment needed

No additional information available

SECTION 5: Firefighting measures

5.1. Extinguishing media

Suitable extinguishing media	: Use fire control measures appropriate for the surrounding fire. Prevent water used in emergency cases from entering sewers and drainage systems.
------------------------------	--

5.2. Special hazards arising from the substance or mixture

Fire hazard	: Not flammable.
Explosion hazard	: No direct explosion hazard.
Reactivity in case of fire	: Product is not explosive.
Hazardous decomposition products in case of fire	: Toxic fumes may be released.

5.3. Advice for firefighters

Protection during firefighting	: Do not attempt to take action without suitable protective equipment. Self-contained breathing apparatus. Complete protective clothing.
--------------------------------	--

SECTION 6: Accidental release measures

6.1. Personal precautions, protective equipment and emergency procedures

6.1.1. For non-emergency personnel

No additional information available

6.1.2. For emergency responders

Protective equipment	: Do not attempt to take action without suitable protective equipment. For further information refer to section 8: "Exposure controls/personal protection".
----------------------	---

6.2. Environmental precautions

Avoid release to the environment. Do not allow to enter drains or water courses.

6.3. Methods and material for containment and cleaning up

For containment	: Absorb spilled material with sand or earth.
Methods for cleaning up	: Take up liquid spill into absorbent material.
Other information	: Dispose of materials or solid residues at an authorized site.

6.4. Reference to other sections

For further information refer to section 13.

Joules Multi-Surface Matt Emulsion - Various Colours

Safety Data Sheet

according to Regulation (EC) No. 1907/2006 (REACH) with its amendment Regulation (EU) 2015/830

SECTION 7: Handling and storage

7.1. Precautions for safe handling

Precautions for safe handling : Ensure good ventilation of the work station. Wear personal protective equipment.
Hygiene measures : Do not eat, drink or smoke when using this product. Always wash hands after handling the product.

7.2. Conditions for safe storage, including any incompatibilities

Storage conditions : Store in a well-ventilated place. Keep cool. Protect from freezing.

7.3. Specific end use(s)

No additional information available

SECTION 8: Exposure controls/personal protection

8.1. Control parameters

8.1.1 National occupational exposure and biological limit values

No additional information available

8.1.2. Recommended monitoring procedures

No additional information available

8.1.3. Air contaminants formed

No additional information available

8.1.4. DNEL and PNEC

No additional information available

8.1.5. Control banding

No additional information available

8.2. Exposure controls

8.2.1. Appropriate engineering controls

No additional information available

8.2.2. Personal protection equipment

Personal protective equipment symbol(s):



8.2.2.1. Eye and face protection

Eye protection:

Safety glasses

8.2.2.2. Skin protection

Hand protection:

Wear protective gloves

Other skin protection

Materials for protective clothing:

Wear protective clothing

8.2.2.3. Respiratory protection

Respiratory protection:

In case of insufficient ventilation, wear suitable respiratory equipment

Joules Multi-Surface Matt Emulsion - Various Colours

Safety Data Sheet

according to Regulation (EC) No. 1907/2006 (REACH) with its amendment Regulation (EU) 2015/830

8.2.2.4. Thermal hazards

No additional information available

8.2.3. Environmental exposure controls

No additional information available

SECTION 9: Physical and chemical properties

9.1. Information on basic physical and chemical properties

Physical state	: Liquid
Colour	: Available in various colours.
Odour	: Characteristic.
Odour threshold	: No data available
pH	: 9
Relative evaporation rate (butylacetate=1)	: No data available
Melting point	: No data available
Freezing point	: 0 °C
Boiling point	: > 35 °C
Flash point	: > 93 °C
Auto-ignition temperature	: No data available
Decomposition temperature	: No data available
Flammability (solid, gas)	: No data available
Vapour pressure	: No data available
Relative vapour density at 20°C	: No data available
Relative density	: No data available
Density	: 1.27 – 1.35 g/cm ³
Solubility	: No data available
Partition coefficient n-octanol/water (Log Pow)	: No data available
Viscosity, kinematic	: No data available
Viscosity, dynamic	: No data available
Explosive properties	: No data available
Oxidising properties	: No data available
Explosive limits	: No data available

9.2. Other information

VOC content : < 0.29 g/l

SECTION 10: Stability and reactivity

10.1. Reactivity

The product is non-reactive under normal conditions of use, storage and transport.

10.2. Chemical stability

Stable under normal conditions.

10.3. Possibility of hazardous reactions

No dangerous reactions known under normal conditions of use.

10.4. Conditions to avoid

None under recommended storage and handling conditions (see section 7).

10.5. Incompatible materials

No additional information available

10.6. Hazardous decomposition products

Under normal conditions of storage and use, hazardous decomposition products should not be produced.

Joules Multi-Surface Matt Emulsion - Various Colours

Safety Data Sheet

according to Regulation (EC) No. 1907/2006 (REACH) with its amendment Regulation (EU) 2015/830

SECTION 11: Toxicological information

11.1 Information on toxicological effects

Acute toxicity (oral)	: Not classified
Acute toxicity (dermal)	: Not classified
Acute toxicity (inhalation)	: Not classified
Skin corrosion/irritation	: Not classified
	pH: 9

Methylisothiazolinone (2682-20-4)	
pH	2.58 Temp.: 25 °C Concentration: 50 g/L
Serious eye damage/irritation	: Not classified
	pH: 9

Methylisothiazolinone (2682-20-4)	
pH	2.58 Temp.: 25 °C Concentration: 50 g/L
Respiratory or skin sensitisation	: Not classified
Germ cell mutagenicity	: Not classified
Carcinogenicity	: Not classified
Reproductive toxicity	: Not classified
STOT-single exposure	: Not classified
STOT-repeated exposure	: Not classified

Methylisothiazolinone (2682-20-4)	
LOAEL (oral, rat, 90 days)	71.2 mg/kg bodyweight Animal: rat, Guideline: OECD Guideline 407 (Repeated Dose 28-Day Oral Toxicity Study in Rodents), Guideline: other:
Aspiration hazard	: Not classified

SECTION 12: Ecological information

12.1. Toxicity

Hazardous to the aquatic environment, short-term (acute)	: Not classified
Hazardous to the aquatic environment, long-term (chronic)	: Not classified

Methylisothiazolinone (2682-20-4)	
LC50 - Fish [1]	4.77 mg/l Test organisms (species): Oncorhynchus mykiss (previous name: Salmo gairdneri)
EC50 - Crustacea [1]	1.6 mg/l Test organisms (species): Daphnia magna

12.2. Persistence and degradability

Joules Multi-Surface Matt Emulsion - Various Colours	
Persistence and degradability	Not rapidly degradable
1,2-benzisothiazol-3(2H)-one; 1,2-benzisothiazolin-3-one (2634-33-5)	
Persistence and degradability	Not rapidly degradable
reaction mass of 5-chloro-2-methyl-2H-isothiazol-3-one and 2-methyl-2H-isothiazol-3-one (3:1) (55965-84-9)	
Persistence and degradability	Not rapidly degradable
Methylisothiazolinone (2682-20-4)	
Persistence and degradability	Not rapidly degradable

Joules Multi-Surface Matt Emulsion - Various Colours

Safety Data Sheet

according to Regulation (EC) No. 1907/2006 (REACH) with its amendment Regulation (EU) 2015/830

12.3. Bioaccumulative potential

No additional information available

12.4. Mobility in soil

No additional information available

12.5. Results of PBT and vPvB assessment

No additional information available

12.6. Other adverse effects

No additional information available

SECTION 13: Disposal considerations

13.1. Waste treatment methods

Waste treatment methods : Dispose of contents/container in accordance with licensed collector's sorting instructions.
Sewage disposal recommendations : Disposal must be done according to official regulations.
Ecological waste information : Avoid release to the environment. Do not allow to enter drains or water courses.

SECTION 14: Transport information

In accordance with ADR / IMDG / IATA / ADN / RID

ADR	IMDG	IATA	ADN	RID
14.1. UN number				
UN -	Not applicable	Not applicable	Not applicable	Not applicable
14.2. UN proper shipping name				
Not applicable	Not applicable	Not applicable	Not applicable	Not applicable
14.3. Transport hazard class(es)				
Not applicable	Not applicable	Not applicable	Not applicable	Not applicable
14.4. Packing group				
Not applicable	Not applicable	Not applicable	Not applicable	Not applicable
14.5. Environmental hazards				
Dangerous for the environment: No	Not applicable	Not applicable	Not applicable	Not applicable
No supplementary information available				

14.6. Special precautions for user

Overland transport

No data available

Transport by sea

Not applicable

Air transport

Not applicable

Inland waterway transport

Not applicable

Joules Multi-Surface Matt Emulsion - Various Colours

Safety Data Sheet

according to Regulation (EC) No. 1907/2006 (REACH) with its amendment Regulation (EU) 2015/830

Rail transport

Not applicable

14.7. Transport in bulk according to Annex II of Marpol and the IBC Code

Not applicable

SECTION 15: Regulatory information

15.1. Safety, health and environmental regulations/legislation specific for the substance or mixture

15.1.1. EU-Regulations

REACH Annex XVII (Restriction List)

Contains no substance(s) listed on REACH Annex XVII (Restriction Conditions)

REACH Annex XIV (Authorisation List)

Contains no substance(s) listed on REACH Annex XIV (Authorisation List)

REACH Candidate List (SVHC)

Contains no substance(s) listed on the REACH Candidate List

PIC Regulation (Prior Informed Consent)

Contains no substance(s) listed on the PIC list (Regulation EU 649/2012 concerning the export and import of hazardous chemicals)

POP Regulation (Persistent Organic Pollutants)

Contains no substance(s) listed on the POP list (Regulation EU 2019/1021 on persistent organic pollutants)

Ozone Regulation (1005/2009)

Contains no substance(s) listed on the Ozone Depletion list (Regulation EU 1005/2009 on substances that deplete the ozone layer)

Dual-Use Regulation (428/2009)

Contains no substance subject to the COUNCIL REGULATION (EC) No 428/2009 of 5 May 2009 setting up a Community regime for the control of exports, transfer, brokering and transit of dual-use items.

VOC Directive (2004/42)

VOC content : < 0.29 g/l

Explosives Precursors Regulation (2019/1148)

Contains no substance(s) listed on the Explosives Precursors list (Regulation EU 2019/1148 on the marketing and use of explosives precursors)

Drug Precursors Regulation (273/2004)

Contains no substance(s) listed on the Drug Precursors list (Regulation EC 273/2004 on the manufacture and the placing on market of certain substances used in the illicit manufacture of narcotic drugs and psychotropic substances)

15.1.2. National regulations

No additional information available

15.2. Chemical safety assessment

No additional information available

SECTION 16: Other information

Full text of H- and EUH-statements:

Acute Tox. 2 (Dermal)	Acute toxicity (dermal), Category 2
Acute Tox. 2 (Inhalation)	Acute toxicity (inhal.), Category 2
Acute Tox. 3 (Dermal)	Acute toxicity (dermal), Category 3
Acute Tox. 3 (Oral)	Acute toxicity (oral), Category 3
Acute Tox. 4 (Oral)	Acute toxicity (oral), Category 4

Joules Multi-Surface Matt Emulsion - Various Colours

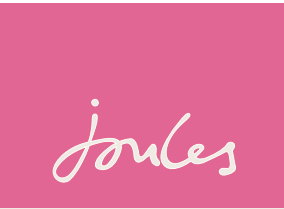
Safety Data Sheet

according to Regulation (EC) No. 1907/2006 (REACH) with its amendment Regulation (EU) 2015/830

Full text of H- and EUH-statements:	
Aquatic Acute 1	Hazardous to the aquatic environment – Acute Hazard, Category 1
Aquatic Chronic 1	Hazardous to the aquatic environment – Chronic Hazard, Category 1
EUH208	Contains 1,2-benzisothiazol-3(2H)-one; 1,2-benzisothiazolin-3-one(2634-33-5), reaction mass of 5-chloro-2-methyl-2H-isothiazol-3-one and 2-methyl-2H-isothiazol-3-one (3:1)(55965-84-9), Methylisothiazolinone(2682-20-4). May produce an allergic reaction.
EUH211	Warning! Hazardous respirable droplets may be formed when sprayed. Do not breathe spray or mist.
Eye Dam. 1	Serious eye damage/eye irritation, Category 1
Eye Irrit. 2	Serious eye damage/eye irritation, Category 2
H301	Toxic if swallowed.
H302	Harmful if swallowed.
H310	Fatal in contact with skin.
H311	Toxic in contact with skin.
H314	Causes severe skin burns and eye damage.
H315	Causes skin irritation.
H317	May cause an allergic skin reaction.
H318	Causes serious eye damage.
H319	Causes serious eye irritation.
H330	Fatal if inhaled.
H400	Very toxic to aquatic life.
H410	Very toxic to aquatic life with long lasting effects.
Skin Corr. 1B	Skin corrosion/irritation, Category 1, Sub-Category 1B
Skin Corr. 1C	Skin corrosion/irritation, Category 1, Sub-Category 1C
Skin Irrit. 2	Skin corrosion/irritation, Category 2
Skin Sens. 1	Skin sensitisation, Category 1
Skin Sens. 1A	Skin sensitisation, category 1A

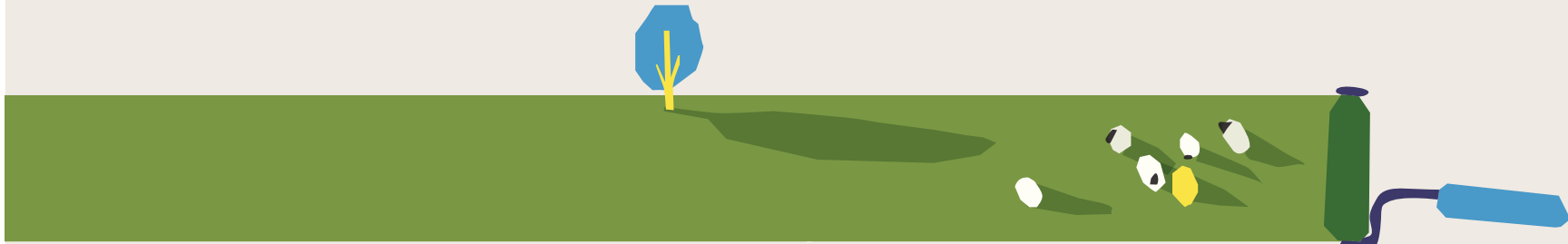
Safety Data Sheet (SDS), EU

This information is based on our current knowledge and is intended to describe the product for the purposes of health, safety and environmental requirements only. It should not therefore be construed as guaranteeing any specific property of the product.



Multi-surface

MATT EMULSION



TAKE THE COLOURFUL PATH

2.5 Litres e

For use on walls, ceilings, wood and metal* this water-based, multi-surface paint is durable and washable. Perfect for everyday living.



Surface Preparation

Ensure all surfaces are clean, dry and free from dust, grease and dirt. Powdery or flaky surfaces should be sealed with a suitable primer. Glossy walls or previously painted wood and metal surfaces should be lightly sanded prior to painting. Avoid the inhalation of dust. Wear a suitable dust mask when dry sanding. Special precautions should be taken during the surface preparation of pre-1960's paint surfaces as they may contain harmful lead. For further advice contact our customer services. New plaster should be painted with a sealing coat of paint thinned with 10% water. Bare wood and metal should be prepared with a suitable undercoat or primer. Do not apply in very damp or humid conditions or if the room is below 10°C. * Not suitable for oil-filled radiators.

Application

Stir thoroughly before use. Apply by brush or roller. 2 coats will usually be sufficient to give good coverage. In some instances such as painting over dark colours, additional coats may be required. To avoid colour variation when using more than one can, they should be mixed before painting. Coverage up to 12m² per litre depending upon the surface to be painted. Touch dry in 1-2 hours. Allow a minimum of 4 hours between coats. Hard dry overnight.

Cleaning

Remove as much paint as possible from brushes and rollers before cleaning with warm water. Some local authorities have special facilities for the disposal of waste paint. Never empty paint into drains or watercourses.

Storage

This product is water based and so must be protected from frost and extreme temperatures. To avoid the risk of spillage, always store and transport in a secure and upright position. Use within 6 months of purchase. The manufacturer cannot accept any responsibility for any deterioration of the product or packaging after this time.

Cleaning Paint Surfaces

Painted surfaces can be cleaned with a sponge and water. Avoid excessive rubbing as this may leave a visible mark when dry. The use of harsh detergents to remove stains is not recommended.

Safety

Contains a reaction mass of 5-chloro-2-methyl-4-isothiazolin-3-one [EC no. 247-500-7] and 2-methyl-2H-isothiazol-3-one [EC no. 220-239-6] (3:1), 2-methyl-2H-isothiazol-3-one and 1,2-benzisothiazol-3(2H)-one. May produce an allergic

reaction. Warning! Hazardous respirable droplets may be formed when sprayed. Do not breathe spray or mist. Safety data sheet available on request. If medical advice is needed have product container or label to hand. Keep out of reach of children. Always ensure good ventilation during application and drying. Do not get in eyes, on skin or on clothing. IF SWALLOWED, call a poison centre or doctor if you feel unwell. IF ON SKIN, wash immediately with soap and water or a proprietary skin cleaner. Do not use solvent or thinners. IF IN EYES, rinse cautiously with water for several minutes. Remove contact lenses if present and easy to do. Keep rinsing.

FR Contient une masse réactionnelle de 5-chloro-2-méthyl-4-isothiazolin-3-one [EC no. 247-500-7] et 2-méthyl-2H-isothiazol-3-one [EC no. 220-239-6] (3:1), 2-méthyl-2H-isothiazol-3-one et 1,2-benzisothiazol-3(2H)-one. Peut produire une réaction allergique. Attention! Une poussière respirable dangereuse peut se former lors de l'utilisation. Ne pas respirer cette poussière. Fiche de données de sécurité disponible sur demande. En cas de consultation d'un médecin, garder à disposition le récipient ou l'étiquette. Tenir hors de portée des enfants. Éviter tout contact avec les yeux, la peau ou les vêtements. EN CAS D'INGESTION: Appeler un CENTRE ANTIPOISON ou un médecin en cas de malaise. EN CAS DE CONTACT AVEC LA PEAU: laver avec précaution et abondamment à l'eau et au savon. EN CAS DE CONTACT AVEC LES YEUX: Rincer avec précaution à l'eau pendant plusieurs minutes. Enlever les lentilles de contact si la victime en porte et si elles peuvent être facilement enlevées. Continuer à rincer.

DE Enthält eine Reaktionsmasse von 5-chloro-2-methyl-4-isothiazolin-3-one [EC no. 247-500-7] und 2-methyl-2H-isothiazol-3-one [EC no. 220-239-6] (3:1), 2-methyl-2H-isothiazol-3-one und 1,2-benzisothiazol-3(2H)-one. Kann allergische Reaktionen hervorrufen. Achtung! Bei der Verwendung kann gefährlicher lungengängiger Staub entstehen. Staub nicht einatmen. Sicherheitsdatenblatt auf Anfrage erhältlich. Ist ärztlicher Rat erforderlich, Verpackung oder Kennzeichnungsetikett bereithalten. Darf nicht in die Hände von Kindern gelangen. Nicht in die Augen, auf die Haut oder auf die Kleidung gelangen lassen. BEI VERSCHLUCKEN: Bei Unwohlsein GIFTINFORMATIONSZENTRUM/Arzt anrufen. BEI KONTAKT MIT DER HAUT: Behutsam mit viel Wasser und Seife waschen. BEI KONTAKT MIT DEN AUGEN: Einige Minuten lang behutsam mit Wasser spülen.

Eventuell vorhandene Kontaktlinsen nach Möglichkeit entfernen. Weiter spülen.

NL Bevat een reactiemassa van 5-chloro-2-methyl-4-isothiazolin-3-one [EC no. 247-500-7] en 2-methyl-2H-isothiazol-3-one [EC no. 220-239-6] (3:1), 2-methyl-2H-isothiazol-3-one en 1,2-benzisothiazol-3(2H)-one. Kan een allergische reactie veroorzaken. *Let op! Bij gebruik kunnen gevaarlijke inhaledbare stofdeeltjes worden gevormd. Stof niet inademen. Veiligheidsinformatieblad op verzoek verkrijgbaar. Bij het inwinnen van medisch advies, de verpakking of het etiket ter beschikking houden. Buiten het bereik van kinderen houden. Contact met de ogen, de huid of de kleding vermijden. NA INSLIKKEN: bij een onwel gevoel een ANTIGIFCENTRUM/arts raadplegen. BIJ CONTACT MET DE HUID: voorzichtig wassen met veel water en zeep. BIJ CONTACT MET DE OGEN: voorzichtig afspoeien met water gedurende een aantal minuten; contactlenzen verwijderen indien mogelijk en blijven spoelen.

ES Contiene una masa de reacción de 5-cloro-2-metil-4-isotiazolin-3-ona [EC no. 247-500-7] y 2-metil-2H-isotiazol-3-ona [EC no. 220-239-6] (3:1), 2-metil-2H-isotiazol-3-ona y 1,2-bencisotiazol-3(2H)-ona. Puede provocar una reacción alérgica. ¡Atención! Al rociar pueden formarse gotas respirables peligrosas. No respirar el aerosol. Ficha de datos de seguridad disponible bajo pedido. Si necesita consejo médico, tenga a mano el envase o la etiqueta del producto. Mantener fuera del alcance de los niños. Asegúrese siempre de una buena ventilación durante la aplicación y el secado. No permita que entre en contacto con los ojos, la piel o la ropa. EN CASO DE INGESTIÓN, llame a un centro de toxicología o un médico si se siente mal. EN CASO DE CONTACTO CON LA PIEL, lávese inmediatamente con agua y jabón o con un limpiador de piel patentado. No utilice disolventes ni diluyentes. EN CASO DE CONTACTO CON LOS OJOS, enjuague cuidadosamente con agua durante varios minutos. Qúitese las lentes de contacto si lleva y es fácil de hacer. Sigue enjuagando.

Environment

EU limit value for this product (Cat A/a): 30g/L (2010). This product contains max 2.9g/L MINIMAL VOC CONTENT <0.29%. VOC's (Volatile Organic Compounds) contribute to atmospheric pollution. Dispose of contents / container to waste disposal site in accordance with local / national regulation. Do not empty into drains or watercourses.



2.5 Litres e
84.5 fl. oz US

MADE IN THE UK

Graham & Brown Ltd, PO BOX 39, India Mill, Harwood Street, Blackburn, Lancashire, BB1 3DB

Graham & Brown BV, Agriport 99, 1775 TA Middenmeer, The Netherlands

TEL +44 (0) 808 1683795

Made by Graham & Brown under licence for Joules

For further products please visit joules.com

