

CANDLE & DIFFUSER GIFTSET

INFAME

Instructions for use:

Remove all packaging before lighting the candle. When burning multiple candles at the same time, ensure the distance between each candle as shown within the instructions is followed. Cut the wick to around 1cm. If the candle has multiple wicks, they must all be lit every time the candle is used to ensure even burn. We recommend using a candle snuffer to extinguish the candle flame.

Precautions for use:

With the high content of fragrance in scented candles, traces of oil can be seen on the surface, which is a normal phenomenon and does not affect the use. As there are natural organic materials in the raw material of scented candles, discoloration (slightly yellow) can be seen on the surface, which is a normal and does not affect use. Do not burn candles in a small, confined space for too long. If the flame comes into contact with the wall of the container please stop using immediately. Do not use if containers are cracked. Keep away from children and pets. Keep away from things that can catch fire (curtains, paper, ext). Extinguish the candle when leaving the room. Use candles in a windless environment to avoid smoke. Place the candle upright, keep away from heat sources and avoid direct sunlight.

Caution

Never leave a burning candle unattended. Keep away from things that can catch fire. Keep away from Children and pets. Use a heat resistant candleholder. Ventilate the room after use. Avoid direct inhalation of any smoke. Keep candles at least 10cm apart. Do not burn in a draft. Trim wick to 1cm before use. Never use liquid to extinguish. Do not touch when lit, candle may be hot. Do not place near a heat source. Place candle upright. Snuff out the flame, do not blow it out. Keep wax pool clear of matches and debris. Do not move a burning candle. Remove packaging before use. For best performance, burn the candle for 3 to 4 hours at a time at a room temperature of 20-25 °C. Discontinue use when 5mm of wax remains. Always burn the candle in a non-flammable receptacle. Straighten wick to vertical position before first lighting.



Contains benzyl salicylate; 2-acetyl-1, 2, 3, 4, 5, 6, 7, 8-octahydro-2, 3, 8-tetra-methylnaphtalene (main isomer) . May cause an allergic skin reaction.

Warning
May cause an allergic skin reaction. Harmful to aquatic life with long lasting effects. If medical advice is needed, have product container or label at hand. Keep out of reach of children. Wear protective gloves. IF ON SKIN: Wash with plenty of water. Take off contaminated clothing and wash it before reuse. Dispose of contents / container in accordance with local regulations.

Contains 2-methyl-3- (4-methoxyphenyl) propanal; 2H-Indeno [4, 5B] furan, decahydro-2, 2, 6, 6, 7, 8, 8-heptamethyl; 1-Methoxy-4-Propenylbenzene (= Anethole) ; methyl 2, 4-dihydroxy-3, 6-dimethylbenzoate; 4, 11, 11-trimethyl-6-methylenebicyclo [7. 2. 0] undec-4-ene (= Caryophyllene) ; isoeugenol. May produce an allergic reaction.

UFI:P9QX-R37X-R00J-8SMR

A simple, effective and safe way to continuously fill your home with a delightful aroma.

Instructions for use:

Remove the bottle from the packaging and remove the bottle stopper, place the decor cap cover on the product if provided. Insert the reed sticks into the diffuser, then remove and rotate the reed sticks to allow the infused side to fill your home with aroma. For a more intense fragrance, remove the reed sticks from the liquid over a protected surface and rotate, reinserting into the bottle once a week. Turn over the reed sticks and reinsert into the bottle once a week.

Precautions for use:

Keep away from pets and children. To prolong the fragrance time, keep away from heat and avoid direct sunlight. Do not attempt to use a knife or sharp object to remove the bottle stopper. Do not allow the diffuser to come into contact with furniture, fabrics, finished wood or enamel surfaces. In case of contact rise thoroughly with soap and water. Do not use if containers are cracked. Clean up immediately if any leakage occurs. Due to natural organic materials in the diffusers, discoloration can be seen, which is a normal phenomenon and does not affect the use. Do not allow the diffuser to come into contact with skin or eyes. In case of contact rinse with water immediately. This product is not edible. If accidentally swallowed, seek medical advice immediately.

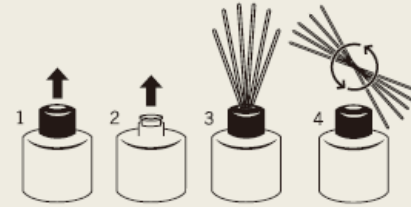


Harmful to aquatic life with long lasting effects.

Avoid release to the environment.

Dispose of contents / container in accordance with local regulations.

EUH208 Contains benzyl 2-hydroxybenzoate; 2-acetyl-1, 2, 3, 4, 5, 6, 7, 8-octahydro-2, 3, 8-tetra-methylnaphtalene (main isomer) . May produce an allergic reaction.



For Any Queries, please contact our Customer Care Team:
 Manufacturer: Dalian Talent International Ltd.
 New Carvel Building, Warstock Road, Kings Heath, Birmingham, B14 4RT, UK
 E-mail: support@dalianalent.com

Authorised representative: Dalian Talent Poland Sp. z o.o
 Street Swietego, Jana 19, 33-240 Zabno, Poland
 E-mail: support@dalianalent.com
 Phone number: +48 1464 654 936



206g / 100ml

Batch No. 2024.11
 Made in China

